



MERCEDES CLA SHOOTING BRAKE: 1KLX297

Vinnumber:	WDD1179081N222368	Versionname:	2.1 CLA 200 CDI SHOOTING BRAKE
First Registrationdate:	29/05/2015	Fiscalpower:	
Expertise Mileage:	48771	Power Kw:	100
Bodytype:		Body color:	Grey
Gearbox:	Automatic	Paint type:	Metallic
Transmission:	Front	Rims summer:	Aluminium
Fueltype:	Diesel	Oil level:	OK
Maintenance:	SERVICE B5 IN 14D	Parking lot:	4830
Maintenance:	OK		
Battery functioning:	Yes		
Number of doors:	5		
Number of seats:	5		
Number head rests:	1		
Rims summer:	Aluminium		
Category:	Passenger Car		
Oil level:	OK		
Registration Certificate Car (BE):	Yes		

Options

Radio CD	Central consol F
GPS storage	SD Luggage cover
GPS storage	
Windows electric F	
Windows electric R	
Cruise Control	
Steering wheel multifunctional	
Radio multimedia	
Type of headlighting	Headlighting Halogen
Type of GPS	GPS big screen color
Type of Lining	Lining semi-artificial leather
Type of climate control	Manual climate control
Sport seats	

Limited Technical Inspection

Airco functioning	OK	Battery functioning	Yes
Tires wear profile	OK	Power steering	Yes
Idle position	OK	Sound engine	OK
Engine startingtime	OK	Clutch test	OK
Exhaust gass	OK	Wiper fluid level	OK
Handbrake	OK	Transmission	OK
		Lighting	OK
		Wiperblades	OK

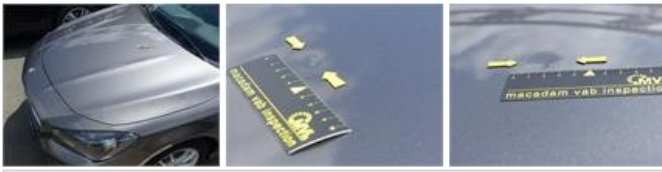
Degree of wear

	205/55/16/91 V LightMetal			
Summer tyres:	Fr.L.	Michelin: 5 mm	Fr.R.	Michelin: 5 mm
	Re.L.	Michelin: 7 mm	Re.R.	Michelin: 6 mm

Assistance equipment

Repair kit	Yes	Compressor	Yes
------------	------------	------------	------------

Total cost ex VAT	63,00
Bonnet, Dent(s), PDR - Paintless dent repair	63,00



Seat cover F L, Worn, Acceptable	0,00
<i>No pictures to display</i>	
Wing R R, Dent(s), Acceptable	0,00
<i>No pictures to display</i>	
Wing R L, Dent(s), Acceptable	0,00
<i>No pictures to display</i>	