



**VOLKSWAGEN Polo: 1GRY577**

|                                    |                          |              |                                       |
|------------------------------------|--------------------------|--------------|---------------------------------------|
| Vinnumber:                         | <b>VWVZZZ6RZEY243460</b> | Versionname: | <b>POLO BlueMotion Techn.DPF 90PK</b> |
| First Registrationdate:            | <b>11/04/2014</b>        | Fiscalpower: |                                       |
| Expertise Mileage:                 | <b>138830</b>            | Power Kw:    | <b>66</b>                             |
| Bodytype:                          | <b>Hatchback</b>         | Body color:  | <b>Silver</b>                         |
| Gearbox:                           | <b>MAN 5 VIT</b>         | Paint type:  | <b>Metalic</b>                        |
| Transmission:                      | <b>Front</b>             | Rims summer: | <b>Steel</b>                          |
| Fueltype:                          | <b>Diesel</b>            | Oil level:   | <b>OK</b>                             |
| Battery functioning:               | <b>Yes</b>               | Parking lot: | <b>1231</b>                           |
| Number of doors:                   | <b>5</b>                 |              |                                       |
| Number of seats:                   | <b>5</b>                 |              |                                       |
| Number head rests:                 | <b>5</b>                 |              |                                       |
| Rims summer:                       | <b>Steel</b>             |              |                                       |
| Category:                          | <b>Passenger Car</b>     |              |                                       |
| Oil level:                         | <b>OK</b>                |              |                                       |
| Registration Certificate Car (BE): | <b>Yes</b>               |              |                                       |

**Options**

|                         |                               |
|-------------------------|-------------------------------|
| Radio CD                | Central consol F              |
| Windows electric F      | Luggage cover                 |
| Windows electric R      | Type of Tow bar               |
| Radio multimedia        | <b>No Tow bar</b>             |
| Type of headlighting    | <b>Headlighting Halogen</b>   |
| Type of GPS             | <b>No GPS</b>                 |
| Type of Lining          | <b>Lining fabrics</b>         |
| Type of climate control | <b>Manual climate control</b> |

**Limited Technical Inspection**

|                     |           |                     |            |
|---------------------|-----------|---------------------|------------|
| Airco functioning   | <b>OK</b> | Battery functioning | <b>Yes</b> |
| Tires wear profile  | <b>OK</b> | Power steering      | <b>Yes</b> |
| Idle position       | <b>OK</b> | Sound engine        | <b>OK</b>  |
| Engine startingtime | <b>OK</b> | Clutch test         | <b>OK</b>  |
| Exhaust gass        | <b>OK</b> | Wiper fluid level   | <b>OK</b>  |
| Handbrake           | <b>OK</b> | Transmission        | <b>OK</b>  |
|                     |           | Lighting            | <b>OK</b>  |
|                     |           | Wiperblades         | <b>OK</b>  |

**Degree of wear**

|               |                             |                          |       |                          |
|---------------|-----------------------------|--------------------------|-------|--------------------------|
|               | <b>185/60/15/88 H Steel</b> |                          |       |                          |
| Summer tyres: | Fr.L.                       | <b>Continental: 2 mm</b> | Fr.R. | <b>Continental: 2 mm</b> |
|               | Re.L.                       | <b>Continental: 4 mm</b> | Re.R. | <b>Continental: 4 mm</b> |

**Assistance equipment**

|  |            |      |            |
|--|------------|------|------------|
| Spare wheel                              | <b>Yes</b> | Jack | <b>Yes</b> |
| Number of charging cables (normal)       | <b>0</b>   |      |            |
| Number of charging cables (rapid charge) | <b>0</b>   |      |            |

|  |                |
|--|----------------|
| <b>Total cost ex VAT</b>                                       | <b>1483,62</b> |
| <b>Bumper R, Scratch(es), LI - Repair and paint (complete)</b> | <b>169,44</b>  |





Door R R, Chemical polution, Acceptable 0,00

No pictures to display

Wheel cover F L, Missing, E - Replace 24,00



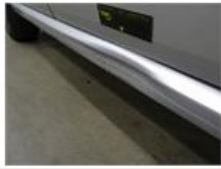
Wing R L, Scratch(es), Acceptable 0,00

No pictures to display

Wheel cover R R, Missing, E - Replace 24,00



Sill outer R, Dent(s), It - Spot repair 115,56



Wheel cover F R, Scratch(es), E - Replace 24,00



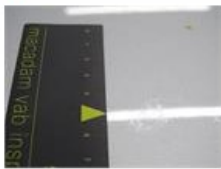
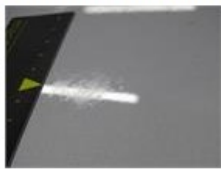
Door F R, Scratch(es), LI - Repair and paint (complete) 254,68



Door R R, Scratch(es), LI - Repair and paint (complete) 254,68



Roof, Chemical polution, LI - Repair and paint (complete) 385,20



Bumper F, Scratch(es), Acceptable 0,00

No pictures to display

Bonnet, Chemical polution, LI - Repair and paint (complete) 232,06



Rearview mirror housing L, Scratch(es), Acceptable 0,00

No pictures to display