


BMW 2 GRAN TOURER: LK5806

Vinnumber:	WBA2E510505C13339	Versionname:	2.0 218D (110KW) GRAN TOURER
First Registrationdate:	8/11/2015	Fiscalpower:	
Expertise Mileage:	104057	Power Kw:	100
Bodytype:	MPV	Body color:	Black
Gearbox:	Automatic	Paint type:	Metallic
Transmission:	Front	Rims summer:	Aluminium
Fueltype:	Diesel	Oil level:	OK
Battery functioning:	Yes	Parking lot:	4220
Number of doors:	5		
Number of seats:	5		
Number head rests:	5		
Rims summer:	Aluminium		
Category:	Passenger Car		
Oil level:	OK		

Options

GPS storage	HD	Sun Roof electric	
GPS storage		Panoramic roof	
Windows electric F		Central consol F	
Windows electric R		Luggage cover	
Cruise Control		Front parking sensors	
Steering wheel multifunctional		Rear parking sensors	
Seats F heated		Type of Tow bar	No Tow bar
Radio multimedia			
Type of headlighting	Headlighting Halogen		
Type of GPS	GPS big screen color		
Type of Lining	Lining artificial leather		
Type of climate control	Autom climate control		

Limited Technical Inspection

Airco functioning	OK	Battery functioning	Yes
Tires wear profile	OK	Power steering	Yes
Idle position	OK	Sound engine	OK
Engine startingtime	OK	Clutch test	OK
Exhaust gass	OK	Wiper fluid level	OK
Handbrake	OK	Transmission	OK
		Lighting	OK
		Wiperblades	OK

Degree of wear

	205/55/17/95 H LightMetal			
Winter tyres:	Fr.L.	Pirelli: 3 mm	Fr.R.	Pirelli: 3 mm
	Re.L.	Michelin: 7 mm	Re.R.	Michelin: 7 mm

Assistance equipment

Repair kit	Yes	Compressor	No
Number of charging cables (normal)	0		
Number of charging cables (rapid charge)	0		

Total cost ex VAT	2213,58
-------------------	---------

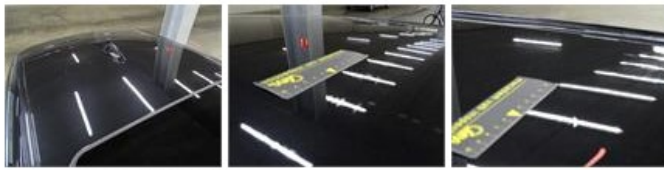
Door R R, Scratch(es), Acceptable	0,00
-----------------------------------	------

No pictures to display

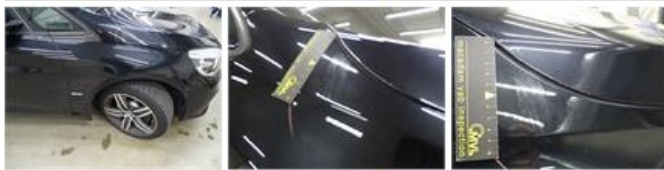
Rocker panel inner R L, Dent(s), LI - Repair and paint (complete)	115,56
---	--------



Roof, Bad repair, Acceptable 0,00



Wing F R, Chemical polution, LI - Repair and paint (complete) 220,18



Door R L, Bad repair, Acceptable 0,00



Door frame R L, Dent(s), It - Spot repair 115,56



Bumper F, Scratch(es), Acceptable 0,00

No pictures to display

Compressor, Missing, E - Replace 0,00



Roof pillar L, Scratch(es), Acceptable 0,00

No pictures to display

Sliding roof, Not functioning (well), I - Repair 0,00

No pictures to display

Windscreen, Scratch(es), E - Replace 487,20



Bumper R, Scratch(es), LI - Repair and paint (complete)

211,80



Roof pillar R, Scratch(es), Acceptable

0,00

No pictures to display

Door F L, Scratch(es), Acceptable

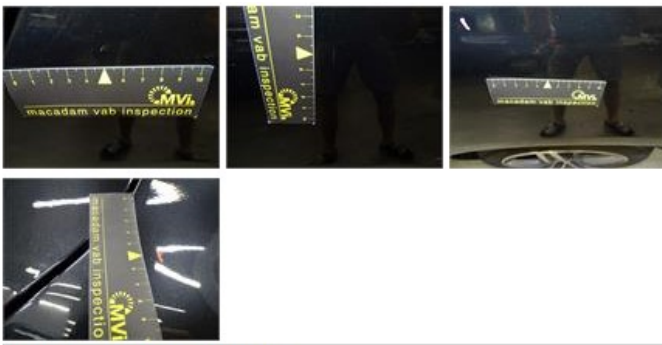
0,00

No pictures to display

Wing R L, Scratch(es), LI - Repair and paint (complete)

308,20

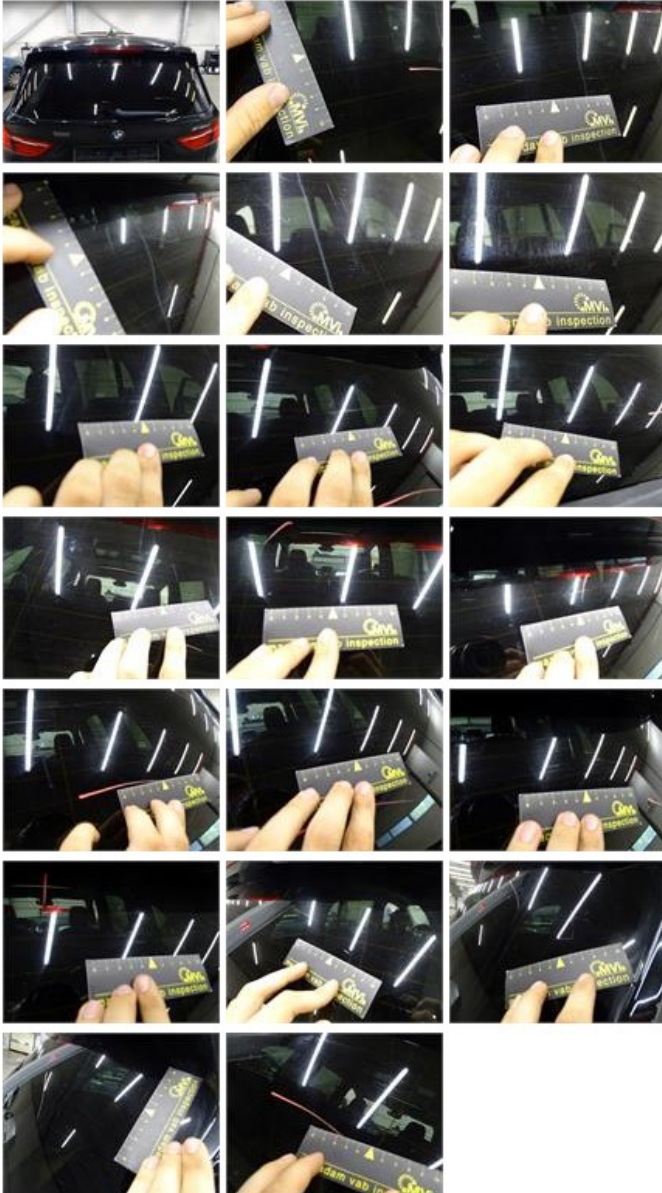




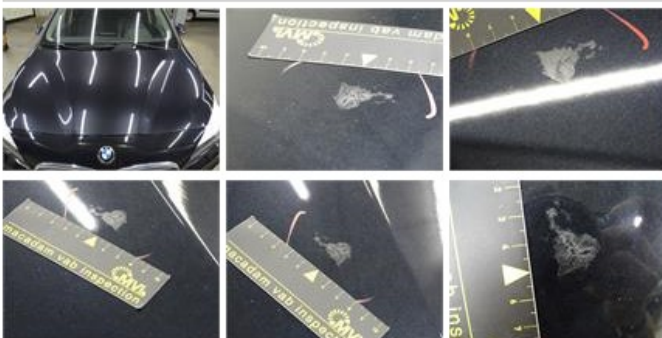
Tailgate, Scratch(es), Acceptable 0,00

No pictures to display

Rear window, Scratch(es), E - Replace 370,00



Bonnet, Chemical polution, LI - Repair and paint (complete) 290,08





Alloy rim R R polished, Scratch(es), LI - Repair and paint (complete)

95,00

