



VOLVO V40: 1NKL334

| | | | |
|------------------------------------|--------------------------|--------------|-----------------------------|
| Vinnumber: | VV1MV7431G2329242 | Versionname: | 2.0 D2-82 KINETIC |
| First Registrationdate: | 10/03/2016 | Fiscalpower: | |
| Expertise Mileage: | 100408 | Power Kw: | 88 |
| Bodytype: | Break | Body color: | Black |
| Gearbox: | MAN 6 VIT | Paint type: | Metalic |
| Transmission: | Front | Rims summer: | Aluminium |
| Fueltype: | Diesel | Oil level: | OK |
| Battery functioning: | Yes | Parking lot: | 1E VERDIEP STEENTJES |
| Number of doors: | 5 | | |
| Number of seats: | 5 | | |
| Number head rests: | 5 | | |
| Rims summer: | Aluminium | | |
| Category: | Passenger Car | | |
| Oil level: | OK | | |
| Registration Certificate Car (BE): | Yes | | |

Options

| | | | |
|--------------------------------|-------------------------------|----------------------|----------------------|
| Radio CD | | Central consol F | |
| GPS storage | HD | Luggage cover | |
| GPS storage | | Rear parking sensors | |
| Windows electric F | | Type of Tow bar | Tow bar fixed |
| Windows electric R | | | |
| Cruise Control | | | |
| Steering wheel multifunctional | | | |
| Radio multimedia | | | |
| Type of headlighting | Headlighting Halogen | | |
| Type of GPS | GPS big screen color | | |
| Type of Lining | Lining fabrics | | |
| Type of climate control | Manual climate control | | |

Limited Technical Inspection

| | | | |
|---------------------|-----------|---------------------|------------|
| Airco functioning | OK | Battery functioning | Yes |
| Tires wear profile | OK | Power steering | Yes |
| Idle position | OK | Sound engine | OK |
| Engine startingtime | OK | Clutch test | OK |
| Exhaust gass | OK | Wiper fluid level | OK |
| Handbrake | OK | Transmission | OK |
| | | Lighting | OK |
| | | Wiperblades | OK |

Degree of wear

| | | | | |
|----------------------------------|-------|-----------------------|-------|-----------------------|
| 205/55/16/91 H LightMetal | | | | |
| Summer tyres: | Fr.L. | Michelin: 4 mm | Fr.R. | Michelin: 4 mm |
| | Re.L. | Michelin: 5 mm | Re.R. | Michelin: 5 mm |

Assistance equipment

| | | | |
|--|------------|------------|------------|
| Repair kit | Yes | Compressor | Yes |
| Number of charging cables (normal) | 0 | | |
| Number of charging cables (rapid charge) | 0 | | |

| | |
|--------------------------|----------------|
| Total cost ex VAT | 3622,67 |
|--------------------------|----------------|

| | |
|--|---------------|
| Wing R L, Scratch(es), LI - Repair and paint (complete) | 308,20 |
|--|---------------|



Tailgate, Scratch(es), LI - Repair and paint (complete)

301,68



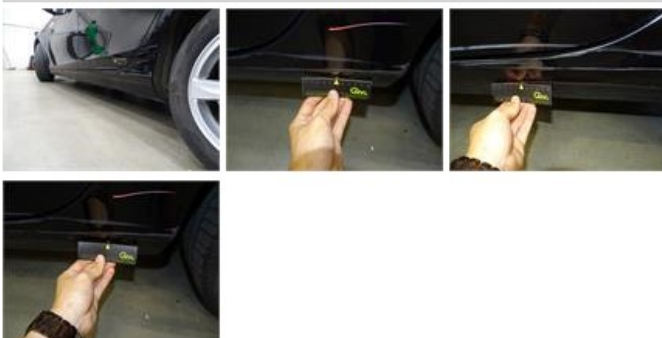
Door F L, Dent(s) and scratch(es), LI - Repair and paint (complete)

318,35



Sill outer L, Scratch(es), LI - Repair and paint (complete)

310,50



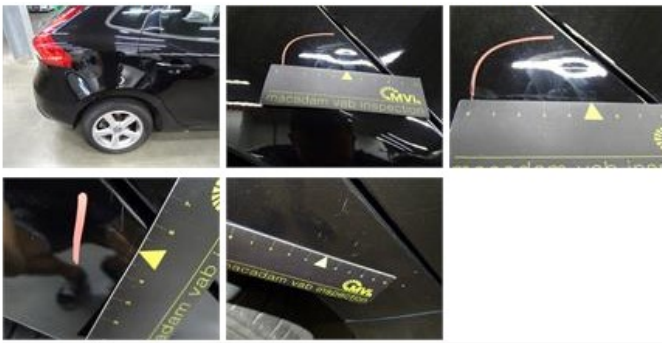
Door F R, Dent(s) and scratch(es), LI - Repair and paint (complete)

318,35



Wing R R, Dent(s) and scratch(es), LI - Repair and paint (complete)

308,20



Wing F L, Scratch(es), LI - Repair and paint (complete)

220,18



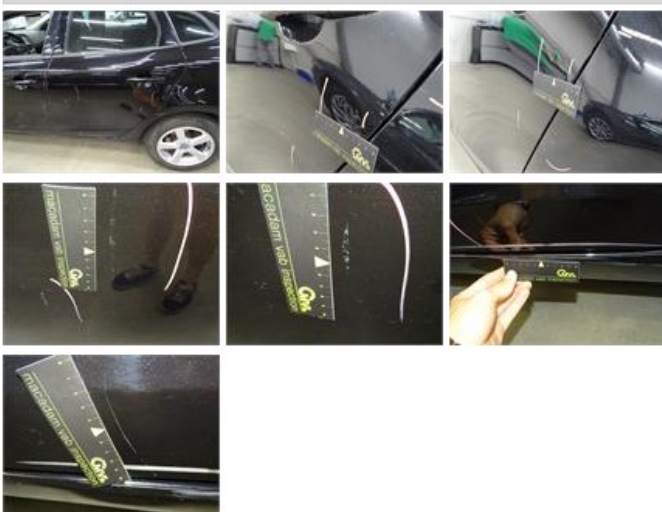
Bonnet, Dent(s) and scratch(es), LI - Repair and paint (complete)

290,08



Door R L, Dent(s) and scratch(es), LI - Repair and paint (complete)

318,35



Wing F R, Chemical polution, LI - Repair and paint (complete)

220,18



Alloy rim F R, Scratch(es), LI - Repair and paint (complete)

95,00



Bumper F, Dent(s) and scratch(es), LI - Repair and paint (complete) 211,80



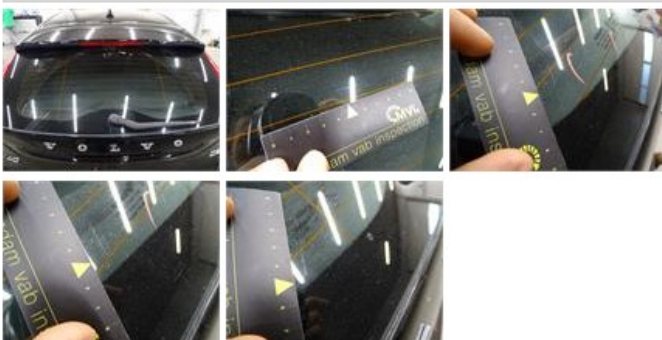
Door R R, Scratch(es), Acceptable 0,00

No pictures to display

Alloy rim F L, Scratch(es), LI - Repair and paint (complete) 95,00



Rear window, Scratch(es), Acceptable 0,00



Bumper R, Scratch(es), LI - Repair and paint (complete) 211,80





Roof, Scratch(es), Acceptable 0,00

No pictures to display

Alloy rim R R, Scratch(es), LI - Repair and paint (complete) 95,00

