



BMW 2 ACTIVE TOURER: 1JXZ812

Vinnumber:	WBA2B31000V380735	Versionname:	1.5 216D ACTIVE TOURER
First Registrationdate:	17/03/2015	Fiscalpower:	
Expertise Mileage:	84680	Power Kw:	85
Bodytype:		Body color:	Brown
Gearbox:	MAN 6 VIT	Paint type:	Metalic
Transmission:	Front	Rims summer:	Aluminium
Fueltype:	Diesel	Oil level:	OK
Maintenance	1/03/2020	Parking lot:	4806
Maintenance	OK		
Maintenance	OVER 6000 KM		
Battery functioning	Yes		
Number of doors	5		
Number of seats	5		
Number head rests	5		
Rims summer	Aluminium		
Category	Passenger Car		
Oil level	OK		
Registration Certificate Car (BE)	Yes		

Options

Windows electric F	Rear parking sensors
Windows electric R	Type of Tow bar
Cruise Control	No Tow bar
Steering wheel multifunctional	
Type of headlighting	Headlighting Halogen
Type of GPS	GPS big screen color
Type of Lining	Lining fabrics

Limited Technical Inspection

Airco functioning	OK	Battery functioning	Yes
Tires wear profile	OK	Power steering	Yes
Idle position	OK	Sound engine	OK
Engine startingtime	OK	Clutch test	OK
Exhaust gass	OK	Wiper fluid level	OK
Handbrake	OK	Transmission	OK
		Lighting	OK
		Wiperblades	OK

Degree of wear

	205/60/16/92 V LightMetal			
Summer tyres:	Fr.L.	Hankook: 4 mm	Fr.R.	Hankook: 4 mm
	Re.L.	Hankook: 5 mm	Re.R.	Hankook: 5 mm

Assistance equipment

Repair kit	Yes	Compressor	Yes
------------	------------	------------	------------

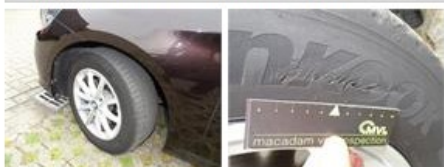
Total cost ex VAT **471,12**

Bumper R, Scratch(es), It - Spot repair **115,56**



Tyre F L, Deformed / Strained, Acceptable

0,00



Backrest cover F R, Stain, Cleaning

25,00



Door F L, Scratch(es), Acceptable

0,00



Bumper F, Scratch(es), It - Spot repair

115,56



Alloy rim R R, Scratch(es), Acceptable

0,00



Fuel cap cover, Scratch(es), 67 - Polish

25,00



Alloy rim R L, Scratch(es), Acceptable

0,00



Alloy rim F L, Scratch(es), LI - Repair and paint (complete)

95,00



Alloy rim F R, Scratch(es), LI - Repair and paint (complete)

95,00



Door R L, Dent(s), Acceptable

0,00

