



**MERCEDES CLA SHOOTING BRAKE: 1LGP372**

Vinnumber:	<b>WDD1179081N290986</b>	Versionname:	<b>2.1 CLA 200 CDI URBAN SHOOTING BRAKE</b>
First Registrationdate:	<b>23/09/2015</b>	Fiscalpower:	
Expertise Mileage:	<b>55197</b>	Power Kw:	<b>100</b>
Bodytype:	<b>Break</b>	Body color:	<b>Grey</b>
Gearbox:	<b>MAN 6 VIT</b>	Paint type:	<b>Metalic</b>
Transmission:	<b>Front</b>	Rims summer:	<b>Aluminium</b>
Fueltype:	<b>Diesel</b>	Oil level:	<b>OK</b>
Battery functioning:	<b>Yes</b>	Parking lot:	<b>3513</b>
Number of doors:	<b>5</b>		
Number of seats:	<b>5</b>		
Number head rests:	<b>1</b>		
Rims summer:	<b>Aluminium</b>		
Category:	<b>Passenger Car</b>		
Oil level:	<b>OK</b>		
Registration Certificate Car (BE):	<b>Yes</b>		

**Options**

Radio CD		Sun Roof electric	
GPS storage	<b>SD</b>	Central consol F	
GPS storage		Luggage cover	
Windows electric F		Front parking sensors	
Windows electric R		Rear parking sensors	
Cruise Control		Type of Tow bar	<b>Tow bar fixed</b>
Steering wheel multifunctional			
Radio multimedia			
Type of headlighting	<b>Headlighting Halogen</b>		
Type of GPS	<b>GPS big screen color</b>		
Type of Lining	<b>Lining artificial leather</b>		
Type of climate control	<b>Manual climate control</b>		

**Limited Technical Inspection**

Airco functioning	<b>OK</b>	Battery functioning	<b>Yes</b>
Tires wear profile	<b>OK</b>	Power steering	<b>Yes</b>
Idle position	<b>OK</b>	Sound engine	<b>OK</b>
Engine startingtime	<b>OK</b>	Clutch test	<b>OK</b>
Exhaust gass	<b>OK</b>	Wiper fluid level	<b>OK</b>
Handbrake	<b>OK</b>	Transmission	<b>OK</b>
		Lighting	<b>OK</b>
		Wiperblades	<b>OK</b>

**Degree of wear**

<b>225/40/18/92 Y LightMetal</b>				
Summer tyres:	Fr.L.	<b>Goodyear: 5 mm</b>	Fr.R.	<b>Goodyear: 5 mm</b>
	Re.L.	<b>Continental: 6 mm</b>	Re.R.	<b>Continental: 6 mm</b>

**Assistance equipment**

Repair kit	<b>Yes</b>	Compressor	<b>Yes</b>
Number of charging cables (normal)	<b>0</b>		
Number of charging cables (rapid charge)	<b>0</b>		

<b>Total cost ex VAT</b>	<b>2893,21</b>
<b>Wing R L, Scratch(es), LI - Repair and paint (complete)</b>	<b>308,20</b>



Rearview mirror housing R, Scratch(es), 67 - Polish 0,00

No pictures to display

Alloy rim F L polished, Scratch(es), LI - Repair and paint (complete) 95,00



Alloy rim R L polished, Scratch(es), LI - Repair and paint (complete) 95,00



Tyre F R, Tear, E - Replace 132,00



Tailgate, Chemical pollution, LI - Repair and paint (complete) 301,68



Door F L, Scratch(es), Acceptable 0,00

No pictures to display

Door R L, Scratch(es), Acceptable 0,00

No pictures to display

Wing F R, Scratch(es), Acceptable 0,00

No pictures to display

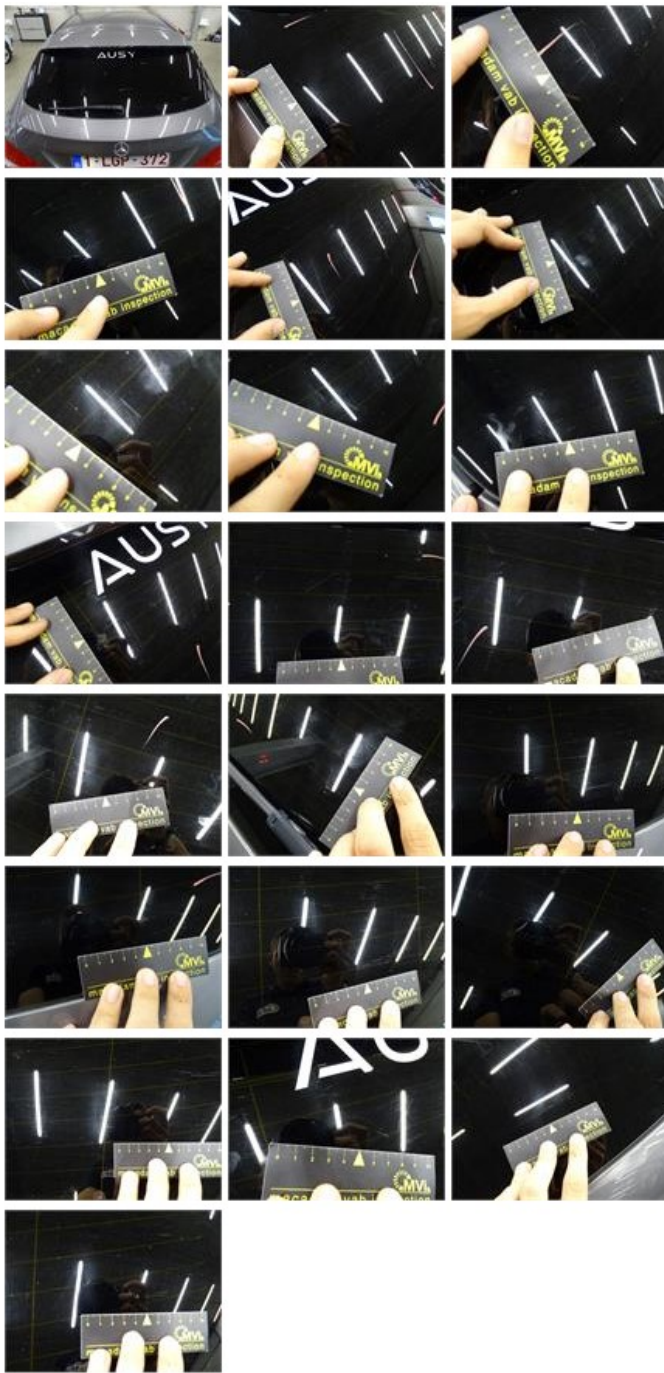
Rearview mirror housing L, Scratch(es), 67 - Polish 0,00

No pictures to display

Wing R R, Scratch(es), Acceptable 0,00

No pictures to display

Rear window, Scratch(es), E - Replace 370,00



Alloy rim R R polished, Scratch(es), LI - Repair and paint (complete)

95,00



Roof, Scratch(es), Acceptable

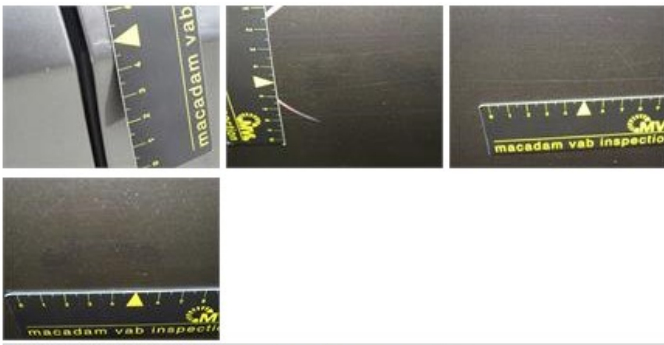
0,00

No pictures to display

Door F R, Dent(s) and scratch(es), LI - Repair and paint (complete)

318,35





Wing F L, Scratch(es), LI - Repair and paint (complete) 220,18



Door R R, Scratch(es), Acceptable 0,00

No pictures to display

Bumper R, Broken, Le - Replace and paint 651,00



Alloy rim F R polished, Scratch(es), LI - Repair and paint (complete) 95,00



Bumper F, Scratch(es), LI - Repair and paint (complete) 211,80





Bonnet, Stone chip(s), Acceptable

0,00

*No pictures to display*