



MERCEDES CLA: 1JJR468

Vinnumber:	WDD1173121N145501	Versionname:	CLA BER 180 CDI 109PK
First Registrationdate:	6/01/2015	Fiscalpower:	
Expertise Mileage:	118234	Power Kw:	80
Bodytype:		Body color:	Grey
Gearbox:	MAN 6 VIT	Paint type:	Metalic
Transmission:	Back	Rims summer:	Aluminium
Fueltype:	Diesel	Oil level:	OK
Maintenance:	OK	Parking lot:	3231
Maintenance:	A IN 21800 KM		
Battery functioning:	Yes		
Number of doors:	4		
Number of seats:	5		
Number head rests:	5		
Rims summer:	Aluminium		
Category:	Passenger Car		
Oil level:	OK		
Registration Certificate Car (BE):	Yes		

Options

Radio CD		Central consol F	
GPS storage		Luggage cover	
GPS storage	HD	Front parking sensors	
Windows electric F		Rear parking sensors	
Windows electric R		Type of Tow bar	No Tow bar
Cruise Control			
Steering wheel multifunctional			
Radio multimedia			
Type of headlighting	Headlighting Xenon		
Type of GPS	GPS big screen color		
Type of Lining	Lining semi-leather		
Type of climate control	Manual climate control		

Limited Technical Inspection

Airco functioning	OK	Battery functioning	Yes
Tires wear profile	OK	Power steering	Yes
Idle position	OK	Sound engine	OK
Engine startingtime	OK	Clutch test	OK
Exhaust gass	OK	Wiper fluid level	OK
Handbrake	OK	Transmission	OK
		Lighting	OK
		Wiperblades	OK

Degree of wear

225/45/17/91 V LightMetal				
Summer tyres:	Fr.L.	Bridgestone: 5 mm	Fr.R.	Bridgestone: 5 mm
	Re.L.	Bridgestone: 5 mm	Re.R.	Bridgestone: 5 mm

Assistance equipment

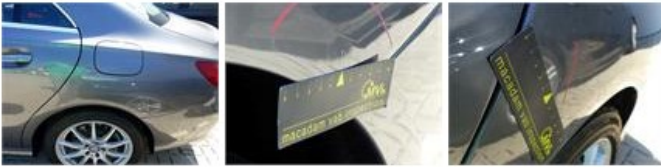
Repair kit	Yes	Compressor	No
Number of charging cables (normal)	0		
Number of charging cables (rapid charge)	0		

Total cost ex VAT 455,56

Door R L, Repaired, P - Check 0,00

Wing R L, Bad repair, P - Check

0,00



Wing R R, Dent(s), Acceptable

0,00

No pictures to display

Compressor, Missing, E - Replace

150,00



Bumper F R, Scratch(es), It - Spot repair

115,56



Alloy rim R R, Scratch(es), LI - Repair and paint (complete)

95,00



Bumper F, Repaired, Acceptable

0,00

No pictures to display

Bumper R, Scratch(es), Acceptable

0,00

No pictures to display

Door R R, Repaired, P - Check

0,00

No pictures to display

Door F R, Repaired, P - Check

0,00

No pictures to display

Alloy rim F R, Scratch(es), LI - Repair and paint (complete)

95,00



Door F L, Repaired, P - Check

0,00

No pictures to display