



**NISSAN Qashqai: 1HCY192**

Vinnumber:	<b>SJNFAAJ11U1110149</b>	Versionname:	<b>QASHQAI 2WD Business Ed.110PK</b>
First Registrationdate:	<b>20/06/2014</b>	Fiscalpower:	
Expertise Mileage:	<b>77236</b>	Power Kw:	<b>81</b>
Bodytype:		Body color:	<b>Grey</b>
Gearbox:	<b>MAN 6 VIT</b>	Paint type:	<b>Metalic</b>
Transmission:	<b>Front</b>	Rims summer:	<b>Aluminium</b>
Fueltype:	<b>Diesel</b>	Oil level:	<b>OK</b>
Maintenance:	<b>OLIE + 12002 KM</b>	Parking lot:	<b>2722</b>
Maintenance:	<b>OK</b>		
Battery functioning:	<b>Yes</b>		
Number of doors:	<b>5</b>		
Number of seats:	<b>5</b>		
Number head rests:	<b>5</b>		
Rims summer:	<b>Aluminium</b>		
Category:	<b>Passenger Car</b>		
Oil level:	<b>OK</b>		
Registration Certificate Car (BE):	<b>Yes</b>		

**Options**

Radio CD		Luggage cover	
GPS storage	<b>SD</b>	Front parking sensors	
GPS storage		Rear parking sensors	
Windows electric F		Type of Tow bar	<b>No Tow bar</b>
Windows electric R			
Cruise Control			
Steering wheel multifunctional			
Type of headlighting	<b>Headlighting Halogen</b>		
Type of GPS	<b>GPS big screen color</b>		
Type of Lining	<b>Lining leather</b>		
Type of climate control	<b>Autom climate control</b>		
Level control			

**Limited Technical Inspection**

Airco functioning	<b>OK</b>	Battery functioning	<b>Yes</b>
Tires wear profile	<b>OK</b>	Power steering	<b>Yes</b>
Idle position	<b>OK</b>	Sound engine	<b>OK</b>
Engine startingtime	<b>OK</b>	Clutch test	<b>OK</b>
Exhaust gass	<b>OK</b>	Wiper fluid level	<b>OK</b>
Handbrake	<b>OK</b>	Transmission	<b>OK</b>
		Lighting	<b>OK</b>
		Wiperblades	<b>OK</b>

**Degree of wear**

<b>215/60/17/96 H LightMetal</b>				
Summer tyres:	Fr.L.	<b>Michelin: 6 mm</b>	Fr.R.	<b>Michelin: 6 mm</b>
	Re.L.	<b>Bridgestone: 7 mm</b>	Re.R.	<b>Bridgestone: 7 mm</b>

**Assistance equipment**

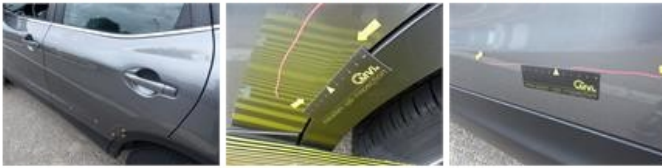
Emergency spare wheel	<b>Yes</b>	Jack	<b>Yes</b>
-----------------------	------------	------	------------

Total cost ex VAT	<b>815,50</b>
-------------------	---------------

Wing F L, Dent(s), PDR - Paintless dent repair	<b>82,80</b>
------------------------------------------------	--------------



Door R L, Dent(s) and scratch(es), LI - Repair and paint (complete)	366,35
---------------------------------------------------------------------	--------



Alloy rim R R, Scratch(es), Acceptable	0,00
----------------------------------------	------

No pictures to display

Bumper R, Scratch(es), Acceptable	0,00
-----------------------------------	------

No pictures to display

Door F R, Scratch(es), Acceptable	0,00
-----------------------------------	------

No pictures to display

Steering wheel, Worn, Acceptable	0,00
----------------------------------	------

No pictures to display

Alloy rim F R, Scratch(es), Acceptable	0,00
----------------------------------------	------

No pictures to display

Door R L, Dent(s), Acceptable	0,00
-------------------------------	------

No pictures to display

Door R R, Dent(s) and scratch(es), LI - Repair and paint (complete)	366,35
---------------------------------------------------------------------	--------

