


**LU Audi a4 Allroad Quattro: WG6008**

Vinnumber:	<b>WAUZZ8K1GA001649</b>	Versionname:	<b>2.0 TDI CLEAN DIESEL S TRONIC QUATTRO</b>
First Registrationdate:	<b>7/07/2015</b>	Fiscalpower:	
Expertise Mileage:	<b>145038</b>	Power Kw:	<b>140</b>
Bodytype:	<b>Break</b>	Body color:	<b>Dark Blue</b>
Gearbox:	<b>Automatic</b>	Paint type:	<b>Metalic</b>
Transmission:	<b>4 Weel</b>	Rims summer:	<b>Aluminium</b>
Fueltype:	<b>Diesel</b>	Oil level:	<b>OK</b>
Battery functioning:	<b>Yes</b>	Parking lot:	<b>2526</b>
Number of doors:	<b>5</b>		
Number of seats:	<b>5</b>		
Number head rests:	<b>5</b>		
Rims summer:	<b>Aluminium</b>		
Category:	<b>Passenger Car</b>		
Oil level:	<b>OK</b>		
Registration Certificate Car (BE):	<b>Yes</b>		

**Options**

Radio CD		Central consol F	
GPS storage		Luggage cover	
GPS storage	<b>HD</b>	Front parking sensors	
Windows electric F		Rear parking sensors	
Windows electric R		Type of Tow bar	<b>Tow bar removable</b>
Cruise Control			
Steering wheel multifunctional			
Seats F heated			
Radio multimedia			
Type of headlighting	<b>Headlighting Xenon</b>		
Type of GPS	<b>GPS big screen color</b>		
Type of Lining	<b>Lining leather</b>		
Type of climate control	<b>Autom climate control</b>		

**Limited Technical Inspection**

Airco functioning	<b>OK</b>	Battery functioning	<b>Yes</b>
Tires wear profile	<b>OK</b>	Power steering	<b>Yes</b>
Idle position	<b>OK</b>	Sound engine	<b>OK</b>
Engine startingtime	<b>OK</b>	Clutch test	<b>OK</b>
Exhaust gass	<b>OK</b>	Wiper fluid level	<b>OK</b>
Handbrake	<b>OK</b>	Transmission	<b>OK</b>
		Lighting	<b>OK</b>
		Wiperblades	<b>OK</b>

**Degree of wear**

<b>225/55/17/97 Y LightMetal</b>				
Summer tyres:	Fr.L.	<b>Michelin: 5 mm</b>	Fr.R.	<b>Michelin: 5 mm</b>
	Re.L.	<b>Michelin: 5 mm</b>	Re.R.	<b>Michelin: 5 mm</b>

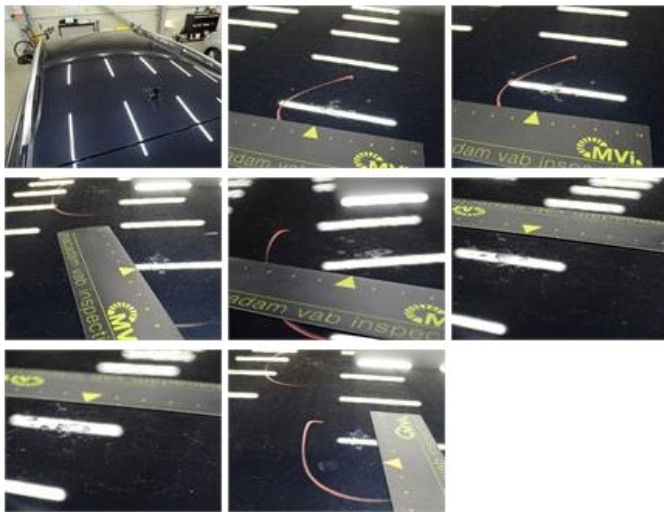
**Assistance equipment**

Emergency spare wheel	<b>Yes</b>	Jack	<b>Yes</b>
Number of charging cables (normal)	<b>0</b>		
Number of charging cables (rapid charge)	<b>0</b>		

Total cost ex VAT	1196,53
Door F R; Dent(s) and scratch(es), LI - Repair and paint (complete)	318,35



Alloy rim R R, Scratch(es), Acceptable	0,00
<i>No pictures to display</i>	
Bumper cover R M, Scratch(es), Acceptable	0,00
<i>No pictures to display</i>	
Door R R, Dent(s), Acceptable	0,00
<i>No pictures to display</i>	
Roof, Chemical polution, LI - Repair and paint (complete)	481,50



Tailgate, Scratch(es), LI - Repair and paint (complete)	301,68
---	--------



Bumper R, Scratch(es), Acceptable	0,00
<i>No pictures to display</i>	
Alloy rim R L, Scratch(es), LI - Repair and paint (complete)	95,00



Wing F L, Scratch(es), Acceptable	0,00
<i>No pictures to display</i>	
Bumper F M, Scratch(es), Acceptable	0,00
<i>No pictures to display</i>	

