


**RENAULT Grand Scenic: 1GKF598**

Vinnumber:	<b>VF1JZ14M650361723</b>	Versionname:	<b>GRAND SCENIC Bose Ed.5pl.110PK</b>
First Registrationdate:	<b>3/03/2014</b>	Fiscalpower:	
Expertise Mileage:	<b>166918</b>	Power Kw:	<b>81</b>
Bodytype:		Body color:	<b>Black</b>
Gearbox:	<b>MAN 6 VIT</b>	Paint type:	<b>Metalic</b>
Transmission:		Rims summer:	<b>Aluminium</b>
Fueltype:	<b>Diesel</b>	Oil level:	<b>OK</b>
Battery functioning:	<b>Yes</b>	Parking lot:	<b>2533</b>
Number of doors:	<b>5</b>		
Number of seats:	<b>5</b>		
Number head rests:	<b>5</b>		
Rims summer:	<b>Aluminium</b>		
Category:	<b>Passenger Car</b>		
Oil level:	<b>OK</b>		
Registration Certificate Car (BE):	<b>Yes</b>		

**Options**

Radio CD	Central consol F
Windows electric R	Luggage cover
Cruise Control	Rear parking sensors
Steering wheel multifunctional	Type of Tow bar
Radio multimedia	<b>No Tow bar</b>
Type of headlighting	<b>Headlighting Halogen</b>
Type of GPS	<b>GPS big screen color</b>
Type of Lining	<b>Lining semi-artificial leather</b>
Type of climate control	<b>Autom climate control</b>

**Limited Technical Inspection**

Airco functioning	<b>OK</b>	Battery functioning	<b>Yes</b>
Tires wear profile	<b>OK</b>	Power steering	<b>Yes</b>
Idle position	<b>OK</b>	Sound engine	<b>OK</b>
Engine startingtime	<b>OK</b>	Clutch test	<b>OK</b>
Exhaust gass	<b>OK</b>	Wiper fluid level	<b>OK</b>
Handbrake	<b>OK</b>	Transmission	<b>OK</b>
		Lighting	<b>OK</b>
		Wiperblades	<b>OK</b>

**Degree of wear**

<b>205/55/17/95 V LightMetal</b>				
Summer tyres:	Fr.L.	<b>Continental: 6 mm</b>	Fr.R.	<b>Continental: 6 mm</b>
	Re.L.	<b>Michelin: 4 mm</b>	Re.R.	<b>Michelin: 4 mm</b>

**Assistance equipment**

Spare wheel	<b>Yes</b>	Jack	<b>Yes</b>
-------------	------------	------	------------

Total cost ex VAT	1579,55
Ignition key, Missing, E - Replace	150,00
<i>No pictures to display</i>	
Door moulding Lower R R, Scratch(es), E - Replace	114,00



Wing R R, Dent(s) and scratch(es), LI - Repair and paint (complete) 308,20



Bumper R, Dent(s) and scratch(es), LI - Repair and paint (complete) 211,80



Alloy rim F L polished, Scratch(es), LI - Repair and paint (complete) 95,00



Protection plate M, Deformed / Strained, E - Replace 74,00



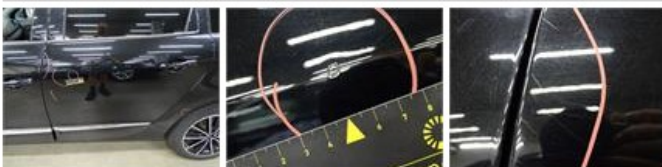
Wing R L, Dent(s) and scratch(es), LI - Repair and paint (complete) 308,20



Alloy rim F R polished, Rust, Acceptable 0,00

No pictures to display

Door R L, Scratch(es), LI - Repair and paint (complete) 318,35





Seat cover F L, Worn, Acceptable

0,00

