


**AUDI A4 AVANT: 1NGC064**

Vinnumber:	<b>WAUZZF47GA052349</b>	Versionname:	<b>2.0 TDI 110KW</b>
First Registrationdate:	<b>16/02/2016</b>	Fiscalpower:	
Expertise Mileage:	<b>62615</b>	Power Kw:	<b>110</b>
Bodytype:	<b>Break</b>	Body color:	<b>Black</b>
Gearbox:	<b>MAN 6 VIT</b>	Paint type:	<b>Metallic</b>
Transmission:		Rims summer:	<b>Aluminium</b>
Fueltype:	<b>Diesel</b>	Oil level:	<b>OK</b>
Battery functioning:	<b>Yes</b>	Parking lot:	<b>2308</b>
Number of doors:	<b>5</b>		
Number of seats:	<b>5</b>		
Number head rests:	<b>5</b>		
Rims summer:	<b>Aluminium</b>		
Category:	<b>Passenger Car</b>		
Oil level:	<b>OK</b>		
Registration Certificate Car (BE):	<b>Yes</b>		

**Options**

Radio CD	Central consol F
Windows electric F	Luggage cover
Windows electric R	Rear parking sensors
Cruise Control	Type of Tow bar
Steering wheel multifunctional	<b>No Tow bar</b>
Seats F heated	
Radio multimedia	
Type of headlighting	<b>Headlighting Xenon</b>
Type of GPS	<b>GPS big screen color</b>
Type of Lining	<b>Lining leather</b>
Type of climate control	<b>Autom climate control</b>

**Limited Technical Inspection**

Airco functioning	<b>OK</b>	Battery functioning	<b>Yes</b>
Tires wear profile	<b>OK</b>	Power steering	<b>Yes</b>
Idle position	<b>OK</b>	Sound engine	<b>OK</b>
Engine startingtime	<b>OK</b>	Clutch test	<b>OK</b>
Exhaust gass	<b>OK</b>	Wiper fluid level	<b>OK</b>
Handbrake	<b>OK</b>	Transmission	<b>OK</b>
		Lighting	<b>OK</b>
		Wiperblades	<b>OK</b>

**Degree of wear**

<b>225/50/17/98 V LightMetal</b>				
Summer tyres:	Fr.L.	<b>Michelin: 5 mm</b>	Fr.R.	<b>Michelin: 5 mm</b>
	Re.L.	<b>Michelin: 6 mm</b>	Re.R.	<b>Michelin: 6 mm</b>

**Assistance equipment**

Emergency spare wheel	<b>Yes</b>
-----------------------	------------

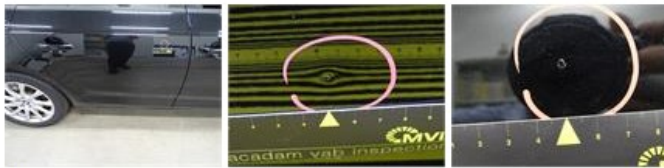
Total cost ex VAT	<b>820,23</b>
Alloy rim R R, Scratch(es), Acceptable	<b>0,00</b>
<i>No pictures to display</i>	
Bumper R, Scratch(es), LI - Repair and paint (complete)	<b>211,80</b>



Bumper F, Scratch(es), Acceptable 0,00

No pictures to display

Door R R, Dent(s) and scratch(es), LI - Repair and paint (complete) 318,35



Bonnet, Dent(s) and scratch(es), LI - Repair and paint (complete) 290,08



Wing R R, Scratch(es), Acceptable 0,00

No pictures to display