



**LU Audi A4 Avant: XH6381**

Vinnumber:	<b>WAUZZZ8K2FA142969</b>	Versionname:	<b>2.0 TDI 110KW CLEAN DIESEL</b>
First Registrationdate:	<b>17/06/2015</b>	Fiscalpower:	
Expertise Mileage:	<b>79895</b>	Power Kw:	<b>110</b>
Bodytype:	<b>Break</b>	Body color:	<b>Grey</b>
Gearbox:	<b>MAN 6 VIT</b>	Paint type:	<b>Metalic</b>
Transmission:		Rims summer:	<b>Aluminium</b>
Fueltype:	<b>Diesel</b>	Oil level:	<b>OK</b>
Battery functioning:	<b>Yes</b>		
Number of doors:	<b>5</b>		
Number of seats:	<b>5</b>		
Number head rests:	<b>5</b>		
Rims summer:	<b>Aluminium</b>		
Category:	<b>Passenger Car</b>		
Oil level:	<b>OK</b>		

**Options**

Radio CD	Central consol F
Windows electric F	Luggage cover
Windows electric R	Rear parking sensors
Cruise Control	Type of Tow bar
Steering wheel multifunctional	<b>No Tow bar</b>
Seats F heated	
Radio multimedia	
Type of headlighting	<b>Headlighting Halogen</b>
Type of GPS	<b>GPS big screen color</b>
Type of Lining	<b>Lining leather</b>
Type of climate control	<b>Autom climate control</b>

**Limited Technical Inspection**

Airco functioning	<b>OK</b>	Battery functioning	<b>Yes</b>
Tires wear profile	<b>OK</b>	Power steering	<b>Yes</b>
Idle position	<b>OK</b>	Sound engine	<b>OK</b>
Engine startingtime	<b>OK</b>	Clutch test	<b>OK</b>
Exhaust gass	<b>OK</b>	Wiper fluid level	<b>OK</b>
Handbrake	<b>OK</b>	Transmission	<b>OK</b>
		Lighting	<b>OK</b>
		Wiperblades	<b>OK</b>

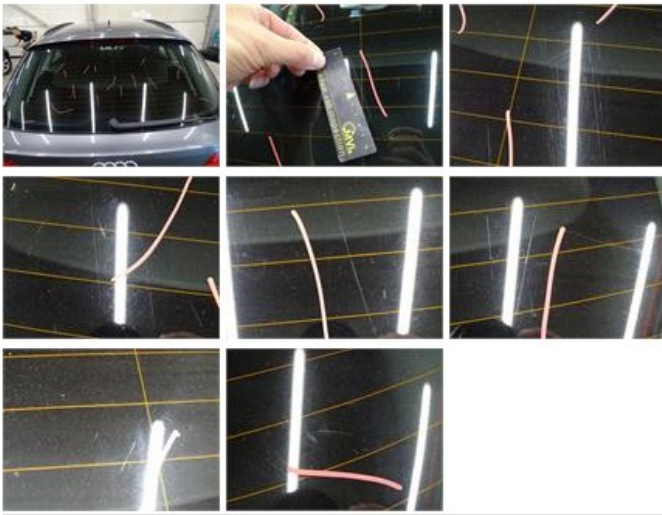
**Degree of wear**

	<b>225/50/17/94 H LightMetal</b>			
Winter tyres:	Fr.L.	<b>Continental: 4 mm</b>	Fr.R.	<b>Continental: 4 mm</b>
	Re.L.	<b>Continental: 7 mm</b>	Re.R.	<b>Continental: 7 mm</b>

**Assistance equipment**

Emergency spare wheel	<b>Yes</b>
-----------------------	------------

Total cost ex VAT	<b>705,74</b>
Bumper R, Scratch(es), Acceptable	<b>0,00</b>
<i>No pictures to display</i>	
Bonnet, Stone chip(s), Acceptable	<b>0,00</b>
<i>No pictures to display</i>	
Rear window, Scratch(es), E - Replace	<b>370,00</b>



Rearview mirror housing R, Scratch(es), LI - Repair and paint (complete) 115,56



Wing F L, Scratch(es), LI - Repair and paint (complete) 220,18

