



FORD TRANSIT CONNECT: 1JVU801

Vinnumber:	WF05XXWPGSFK01197	Versionname:	1.6 TDCI 71KW (T210) TREND
First Registrationdate:	9/03/2015	Fiscalpower:	
Expertise Mileage:	161015	Power Kw:	70
Bodytype:	Transporter	Body color:	White
Gearbox:	MAN 5 VIT	Paint type:	Opaque
Transmission:	Front	Rims summer:	Steel
Fueltype:	Diesel	Oil level:	OK
Battery functioning:	Yes	Parking lot:	2327
Number of doors:	5		
Number of seats:	3		
Number head rests:	3		
Rims summer:	Steel		
Category:	Light Commercial Vehicle		
Oil level:	OK		
Registration Certificate Car (BE):	Yes		

Options

Windows electric F	Type of Tow bar	Tow bar fixed
Steering wheel multifunctional		
Radio multimedia		
Type of headlighting	Headlighting Halogen	
Type of GPS	No GPS	
Type of Lining	Lining fabrics	
Type of climate control	Manual climate control	

Limited Technical Inspection

Airco functioning	OK	Battery functioning	Yes
Tires wear profile	OK	Power steering	Yes
Idle position	OK	Sound engine	OK
Engine startingtime	OK	Clutch test	NOT OK
Exhaust gass	OK	Wiper fluid level	OK
Handbrake	OK	Transmission	NOT OK
		Lighting	OK
		Wiperblades	OK

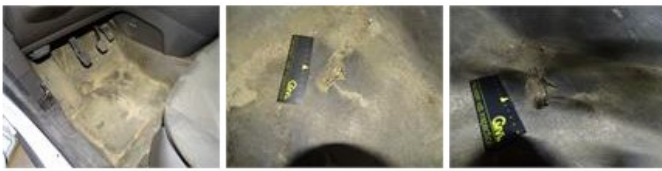
Degree of wear

205/60/16/96 H Steel				
Winter tyres:	Fr.L.	Michelin: 5 mm	Fr.R.	Michelin: 5 mm
	Re.L.	Uniroyal: 6 mm	Re.R.	Uniroyal: 6 mm

Assistance equipment

Repair kit	Yes	Compressor	Yes
Number of charging cables (normal)	0		
Number of charging cables (rapid charge)	0		

Total cost ex VAT	1759,39
Wing F L, Scratch(es), Acceptable	0,00
<i>No pictures to display</i>	
Floor covering F L, Hole, E - Replace	237,00



Bumper R, Dent(s) and scratch(es), Smart repair

110,64



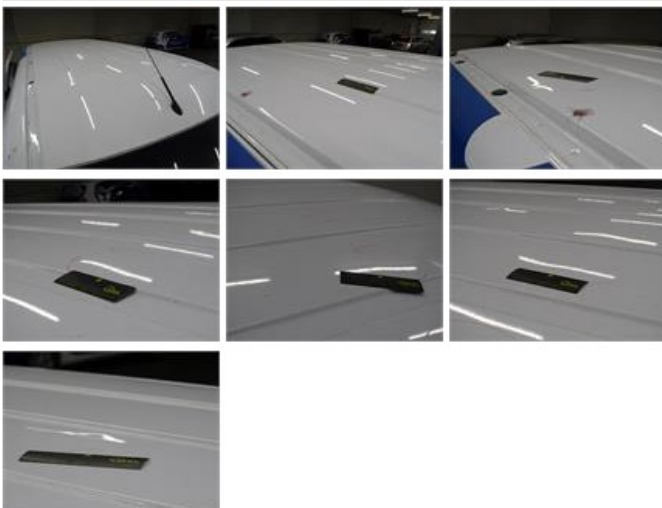
Bumper F, Scratch(es), LI - Repair and paint (complete)

158,85



Roof, Dent(s), LI - Repair and paint (complete)

361,13



Bonnet, Dent(s), LI - Repair and paint (complete)

217,56



Windscreen, Stone chip(s), Windscreen repair

58,80



Wing R L, Dent(s), LI - Repair and paint (complete)

279,15



Door R R, Scratch(es), Acceptable

0,00

No pictures to display

Door F L, Dent(s) and scratch(es), Acceptable

0,00

No pictures to display

Door F R, Dent(s) and scratch(es), LI - Repair and paint (complete)

238,76



Trunk door R R, Dent(s) and scratch(es), Acceptable

0,00

No pictures to display

Bodywork, Not original part, Acceptable

0,00

No pictures to display

Boot carpet, Hole, E - Replace

75,00



Wheel cover R R, Scratch(es), E - Replace

22,50



Wing R R, Scratch(es), Acceptable

0,00

No pictures to display