



**RENAULT MEGANE GRANDTOUR: 1KLB633**

Vinnumber:	<b>VF1KZ0R0251625469</b>	Versionname:	<b>1.5 DCI 95 TOMTOM? EDITION</b>
First Registrationdate:	<b>26/05/2015</b>	Fiscalpower:	
Expertise Mileage:	<b>162929</b>	Power Kw:	<b>70</b>
Bodytype:		Body color:	<b>White</b>
Gearbox:	<b>MAN 6 VIT</b>	Paint type:	<b>Metalic</b>
Transmission:	<b>Front</b>	Rims summer:	<b>Steel</b>
Fueltype:	<b>Diesel</b>	Oil level:	<b>OK</b>
Battery functioning:	<b>Yes</b>	Parking lot:	<b>3625</b>
Number of doors:	<b>5</b>		
Number of seats:	<b>5</b>		
Number head rests:	<b>5</b>		
Rims summer:	<b>Steel</b>		
Category:	<b>Passenger Car</b>		
Oil level:	<b>OK</b>		
Registration Certificate Car (BE):	<b>Yes</b>		

**Options**

Radio CD	Central consol F	
Windows electric F	Luggage cover	
Windows electric R	Rear parking sensors	
Cruise Control	Type of Tow bar	<b>Tow bar fixed</b>
Steering wheel multifunctional		
Radio multimedia		
Type of headlighting	<b>Headlighting Halogen</b>	
Type of GPS	<b>GPS big screen color</b>	
Type of Lining	<b>Lining fabrics</b>	
Type of climate control	<b>Manual climate control</b>	

**Limited Technical Inspection**

Airco functioning	<b>OK</b>	Battery functioning	<b>Yes</b>
Tires wear profile	<b>OK</b>	Power steering	<b>Yes</b>
Idle position	<b>OK</b>	Sound engine	<b>OK</b>
Engine startingtime	<b>OK</b>	Clutch test	<b>OK</b>
Exhaust gass	<b>OK</b>	Wiper fluid level	<b>OK</b>
Handbrake	<b>OK</b>	Transmission	<b>OK</b>
		Lighting	<b>OK</b>
		Wiperblades	<b>OK</b>

**Degree of wear**

	<b>205/55/16/91 H Steel</b>			
Summer tyres:	Fr.L.	<b>Goodyear: 4 mm</b>	Fr.R.	<b>Goodyear: 4 mm</b>
	Re.L.	<b>Goodyear: 4 mm</b>	Re.R.	<b>Goodyear: 4 mm</b>

**Assistance equipment**

Spare wheel	<b>Yes</b>	Jack	<b>Yes</b>
Number of charging cables (normal)	<b>0</b>		
Number of charging cables (rapid charge)	<b>0</b>		

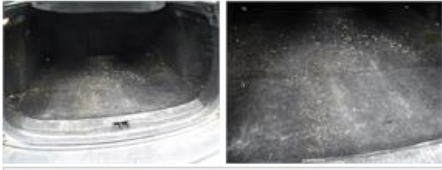
Total cost ex VAT	905,35
Trunk lid covering R, Scratch(es), E - Replace	64,00



Bumper R, Scratch(es), Acceptable 0,00

No pictures to display

Boot carpet, Dirty, Cleaning 25,00



Door panel R R, Scratch(es), E - Replace 114,00



Bumper F, Scratch(es), Acceptable 0,00

No pictures to display

Wheel cover F R, Scratch(es), E - Replace 30,00



Door F L, Scratch(es), LI - Repair and paint (complete) 318,35



Bodywork, Not original part, Acceptable 0,00

No pictures to display

Door panel R L, Scratch(es), E - Replace 114,00



Door trim R R, Scratch(es), Acceptable 0,00

No pictures to display

Wheel cover F L, Scratch(es), Acceptable 0,00

No pictures to display

Luggage space cover, Damaged, E - Replace 240,00

