



SKODA OCTAVIA COMBI: 1JXB678

Vinnumber:	TMBJF7NE1F0183322	Versionname:	1.6 CRTDI 66KW AMBITION
First Registrationdate:	10/03/2015	Fiscalpower:	
Expertise Mileage:	180074	Power Kw:	66
Bodytype:		Body color:	Blue
Gearbox:	MAN 5 VIT	Paint type:	Metalic
Transmission:	Front	Rims summer:	Steel
Fueltype:	Diesel	Oil level:	OK
Battery functioning:	Yes	Parking lot:	3323
Number of doors:	5		
Number of seats:	5		
Number head rests:	5		
Rims summer:	Steel		
Category:	Passenger Car		
Oil level:	OK		
Registration Certificate Car (BE):	Yes		

Options

Windows electric F	Central consol F	
Windows electric R	Luggage cover	
Cruise Control	Rear parking sensors	
Steering wheel multifunctional	Type of Tow bar	Tow bar removable
Radio multimedia		
Type of headlighting	Headlighting Halogen	
Type of GPS	No GPS	
Type of Lining	Lining fabrics	
Type of climate control	Autom climate control	

Limited Technical Inspection

Airco functioning	OK	Battery functioning	Yes
Tires wear profile	OK	Power steering	Yes
Idle position	OK	Sound engine	OK
Engine startingtime	OK	Clutch test	OK
Exhaust gass	OK	Wiper fluid level	OK
Handbrake	OK	Transmission	OK
		Lighting	OK
		Wiperblades	OK

Degree of wear

205/55/16/91 H Steel				
Winter tyres:	Fr.L.	Continental: 4 mm	Fr.R.	Continental: 4 mm
	Re.L.	Continental: 4 mm	Re.R.	Continental: 4 mm

Assistance equipment

Repair kit	Yes	Compressor	Yes
Number of charging cables (normal)	0		
Number of charging cables (rapid charge)	0		

Total cost ex VAT 1013,91

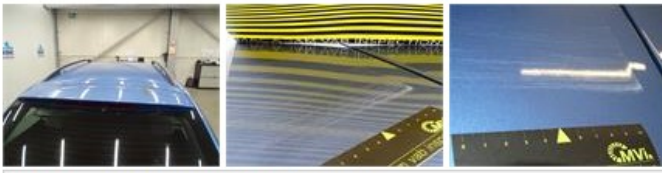
Door F L, Dent(s) and scratch(es), Le - Replace and paint 0,00



Bumper F, Scratch(es), Acceptable 0,00

No pictures to display

Rear spoiler, Dent(s) and scratch(es), LI - Repair and paint (complete) 115,56



Trunk lid covering R, Scratch(es), Acceptable 0,00

No pictures to display

Wheel cover F L, Missing, E - Replace 30,00



Wheel cover F R, Scratch(es), E - Replace 30,00



Sill outer L, Dent(s) and scratch(es), Le - Replace and paint 0,00



Bumper R, Dent(s) and scratch(es), LI - Repair and paint (complete) 211,80



Door R L, Dent(s), LI - Repair and paint (complete) 318,35



Wing R L, Dent(s) and scratch(es), LI - Repair and paint (complete) 308,20

