



**RENAULT Megane: 1FPV314**

Vinnumber:	<b>VF1KZ1A0749555504</b>	Versionname:	<b>MEGANE GT TomTom Edition 90PK</b>
First Registrationdate:	<b>18/09/2013</b>	Fiscalpower:	
Expertise Mileage:	<b>93374</b>	Power Kw:	<b>66</b>
Bodytype:	<b>Break</b>	Body color:	<b>White</b>
Gearbox:	<b>MAN 5 VIT</b>	Paint type:	<b>Opaque</b>
Transmission:	<b>Front</b>	Rims summer:	<b>Steel</b>
Fueltype:	<b>Diesel</b>	Oil level:	<b>OK</b>
Battery functioning:	<b>Yes</b>	Parking lot:	<b>2428</b>
Number of doors:	<b>5</b>		
Number of seats:	<b>5</b>		
Number head rests:	<b>5</b>		
Rims summer:	<b>Steel</b>		
Category:	<b>Passenger Car</b>		
Oil level:	<b>OK</b>		
Registration Certificate Car (BE):	<b>Yes</b>		

**Options**

Radio CD		Central consol F	
GPS storage		Luggage cover	
GPS storage	<b>SD</b>	Rear parking sensors	
Windows electric F		Type of Tow bar	<b>No Tow bar</b>
Windows electric R			
Cruise Control			
Steering wheel multifunctional			
Radio multimedia			
Type of headlighting	<b>Headlighting Halogen</b>		
Type of GPS	<b>GPS big screen color</b>		
Type of Lining	<b>Lining fabrics</b>		
Type of climate control	<b>Manual climate control</b>		

**Limited Technical Inspection**

Airco functioning	<b>OK</b>	Battery functioning	<b>Yes</b>
Tires wear profile	<b>OK</b>	Power steering	<b>Yes</b>
Idle position	<b>OK</b>	Sound engine	<b>OK</b>
Engine startingtime	<b>OK</b>	Clutch test	<b>OK</b>
Exhaust gass	<b>OK</b>	Wiper fluid level	<b>OK</b>
Handbrake	<b>OK</b>	Transmission	<b>OK</b>
		Lighting	<b>OK</b>
		Wiperblades	<b>OK</b>

**Degree of wear**

<b>195/65/15/91 T Steel</b>				
Summer tyres:	Fr.L.	<b>Michelin: 3 mm</b>	Fr.R.	<b>Michelin: 3 mm</b>
	Re.L.	<b>Michelin: 6 mm</b>	Re.R.	<b>Michelin: 6 mm</b>

**Assistance equipment**

Spare wheel	<b>Yes</b>	Jack	<b>Yes</b>
Number of charging cables (normal)	<b>0</b>		
Number of charging cables (rapid charge)	<b>0</b>		

<b>Total cost ex VAT</b>	<b>2804,21</b>
<b>Wheel cover R L, Broken, E - Replace</b>	<b>30,00</b>



Door F L, Dent(s) and scratch(es), LI - Repair and paint (complete)

318,35



Bumper corner R R, Scratch(es), It - Spot repair

115,56



Wing R L, Dent(s) and scratch(es), LI - Repair and paint (complete)

308,20



Door F R, Dent(s) and scratch(es), LI - Repair and paint (complete)

318,35





Dashboard, Scratch(es), Smart repair

110,64



Roof, Dent(s), PDR - Paintless dent repair

63,00



Trunk lid covering R, Scratch(es), Smart repair

110,64



Door panel R L, Scratch(es), Acceptable

0,00

No pictures to display

Wheel cover F L, Scratch(es), Acceptable

0,00

No pictures to display

Bumper corner R L, Scratch(es), It - Spot repair

115,56



Door moulding Lower F R, Scratch(es), Acceptable

0,00

No pictures to display

Wing F R, Scratch(es), Acceptable

0,00

No pictures to display

Bumper R, Scratch(es), Smart repair

110,64





Tailgate, Scratch(es), Acceptable 0,00

No pictures to display

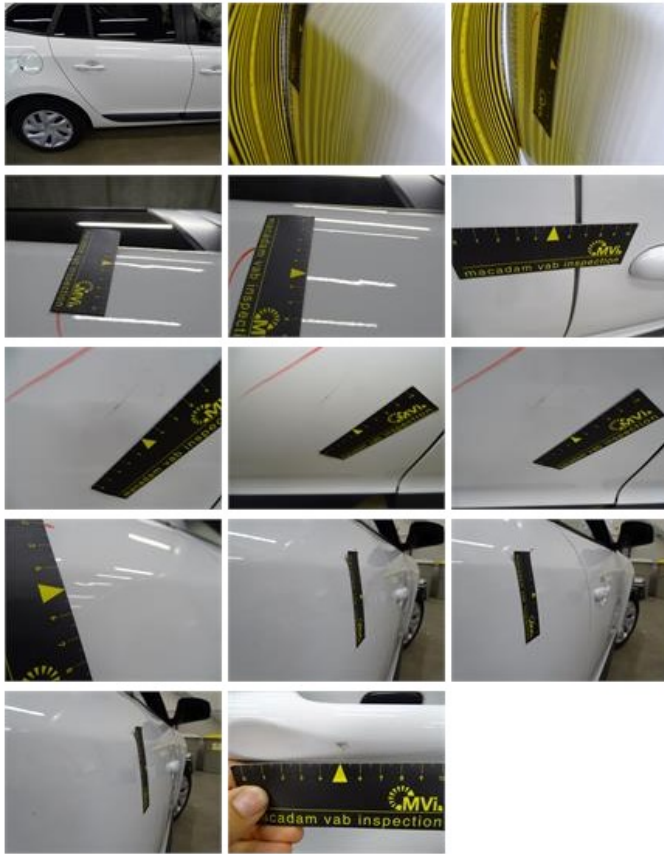
Protection plate M, Deformed / Strained, E - Replace 74,00



Bumper F, Scratch(es), Acceptable 0,00

No pictures to display

Door R R, Dent(s) and scratch(es), LI - Repair and paint (complete) 318,35



Door R L, Dent(s) and scratch(es), Acceptable 0,00

No pictures to display

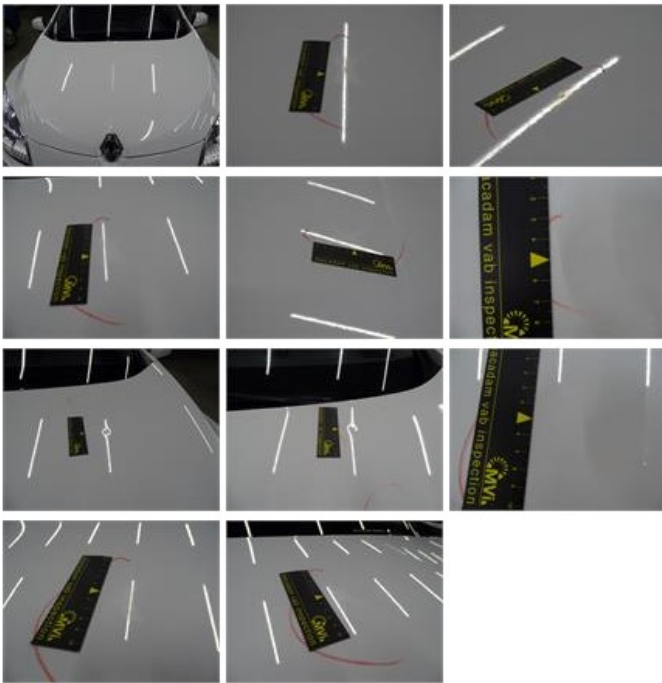
Sill outer L, Scratch(es), Acceptable 0,00

No pictures to display

Bumper spoiler F, Deformed / Strained, E - Replace 42,00



Bonnet, Chemical pollution, LI - Repair and paint (complete) 290,08



Wheel cover R R, Scratch(es), E - Replace

30,00



Luggage space cover, Tear, Smart repair

110,64



Wheel cover F R, Scratch(es), E - Replace

30,00



