



SKODA OCTAVIA COMBI: 1JGR869

| | | | |
|------------------------------------|--------------------------|--------------|---|
| Vinnnumber: | TMBJG7NEXF0124766 | Versionname: | 1.6 CRTDI 77KW GREENTEC AMBITION |
| First Registrationdate: | 12/12/2014 | Fiscalpower: | |
| Expertise Mileage: | 128054 | Power Kw: | 77 |
| Bodytype: | Break | Body color: | Black |
| Gearbox: | MAN 5 VIT | Paint type: | Metalic |
| Transmission: | Front | Rims summer: | Aluminium |
| Fueltype: | Diesel | Oil level: | OK |
| Battery functioning: | Yes | Parking lot: | 2116 |
| Number of doors: | 5 | | |
| Number of seats: | 5 | | |
| Number head rests: | 5 | | |
| Rims summer: | Aluminium | | |
| Category: | Passenger Car | | |
| Oil level: | OK | | |
| Registration Certificate Car (BE): | Yes | | |

Options

| | | | |
|--------------------------------|------------------------------|-----------------------|-------------------|
| Radio CD | | Central consol F | |
| GPS storage | SD | Luggage cover | |
| GPS storage | | Front parking sensors | |
| Windows electric F | | Rear parking sensors | |
| Windows electric R | | Type of Tow bar | No Tow bar |
| Cruise Control | | | |
| Steering wheel multifunctional | | | |
| Radio multimedia | | | |
| Type of headlighting | Headlighting Halogen | | |
| Type of GPS | GPS big screen color | | |
| Type of Lining | Lining fabrics | | |
| Type of climate control | Autom climate control | | |

Limited Technical Inspection

| | | | |
|---------------------|-----------|---------------------|------------|
| Airco functioning | OK | Battery functioning | Yes |
| Tires wear profile | OK | Power steering | Yes |
| Idle position | OK | Sound engine | OK |
| Engine startingtime | OK | Clutch test | OK |
| Exhaust gass | OK | Wiper fluid level | OK |
| Handbrake | OK | Transmission | OK |
| | | Lighting | OK |
| | | Wiperblades | OK |

Degree of wear

| | | | | |
|---------------|----------------------------------|-----------------------|-------|-----------------------|
| | 205/55/16/91 H LightMetal | | | |
| Winter tyres: | Fr.L. | Uniroyal: 6 mm | Fr.R. | Uniroyal: 6 mm |
| | Re.L. | Uniroyal: 7 mm | Re.R. | Uniroyal: 7 mm |

Assistance equipment

| | | | |
|--|------------|------|------------|
| Spare wheel | Yes | Jack | Yes |
| Number of charging cables (normal) | 0 | | |
| Number of charging cables (rapid charge) | 0 | | |

| | |
|-------------------|----------------|
| Total cost ex VAT | 3179,65 |
|-------------------|----------------|

| | |
|---|-------------|
| Rocker panel inner R R, Scratch(es), Acceptable | 0,00 |
|---|-------------|

No pictures to display

| | |
|---|---------------|
| Door R R, Dent(s) and scratch(es), LI - Repair and paint (complete) | 318,35 |
|---|---------------|



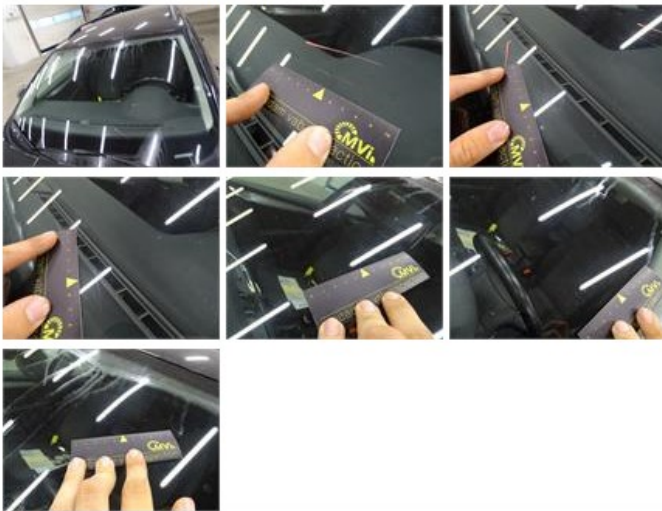
Door panel R R, Tear, Smart repair

110,64



Windscreen, Scratch(es), Acceptable

0,00



Door F L, Dent(s) and scratch(es), LI - Repair and paint (complete)

342,35



Bonnet, Chemical pollution, LI - Repair and paint (complete)

211,80



Wing R L, Dent(s) and scratch(es), LI - Repair and paint (complete)

308,20





Door R L, Scratch(es), Acceptable 0,00

No pictures to display

Tailgate, Scratch(es), LI - Repair and paint (complete) 301,68



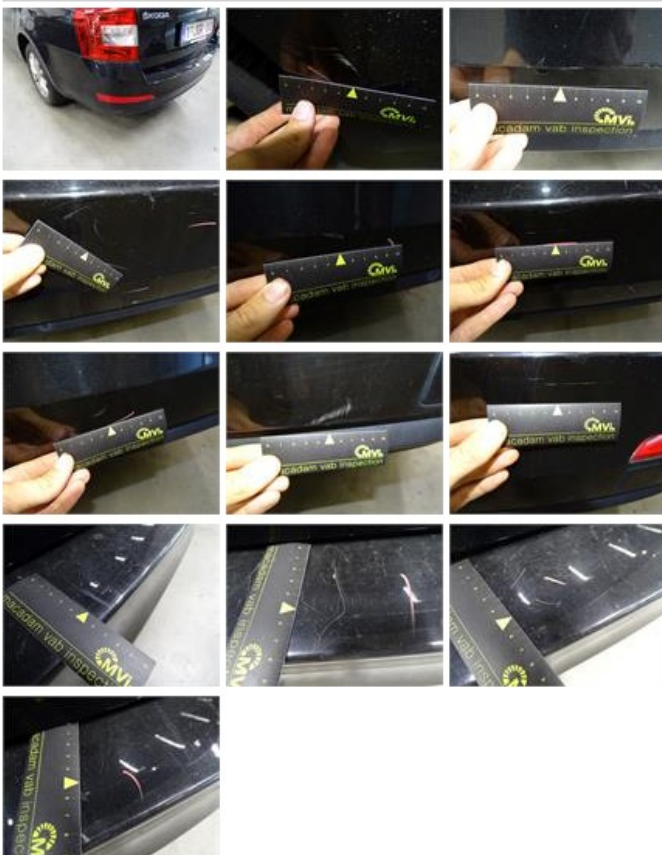
Wing F L, Dent(s) and scratch(es), LI - Repair and paint (complete) 268,18



Rocker panel inner R L, Scratch(es), Acceptable 0,00

No pictures to display

Bumper R, Scratch(es), LI - Repair and paint (complete) 211,80



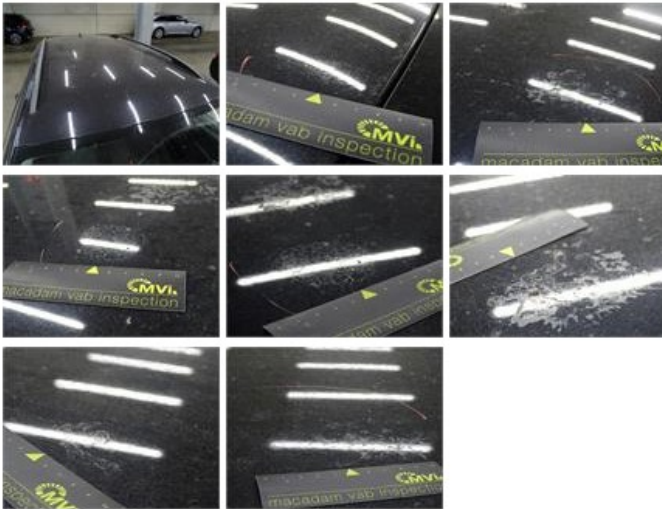
Alloy rim F R, Scratch(es), LI - Repair and paint (complete) 95,00





Roof, Chemical polution, LI - Repair and paint (complete)

481,50



Door F R, Dent(s) and scratch(es), LI - Repair and paint (complete)

318,35



Rear window, Scratch(es), Acceptable

0,00



Bumper F, Dent(s) and scratch(es), LI - Repair and paint (complete)

211,80

