



**MERCEDES CLA SHOOTING BRAKE: 1KSH820**

Vinnumber:	<b>WDD1179081N226316</b>	Versionname:	<b>2.1 CLA 200 CDI SHOOTING BRAKE</b>
First Registrationdate:	<b>23/06/2015</b>	Fiscalpower:	
Expertise Mileage:	<b>70315</b>	Power Kw:	<b>100</b>
Bodytype:		Body color:	<b>Grey</b>
Gearbox:	<b>Automatic</b>	Paint type:	<b>Metalic</b>
Transmission:	<b>Back</b>	Rims summer:	<b>Aluminium</b>
Fueltype:	<b>Diesel</b>	Oil level:	<b>OK</b>
Maintenance:	<b>OK</b>	Parking lot:	<b>3730</b>
Maintenance:	<b>B5 IN 44 DAGEN</b>		
Battery functioning:	<b>Yes</b>		
Number of doors:	<b>5</b>		
Number of seats:	<b>5</b>		
Number head rests:	<b>5</b>		
Rims summer:	<b>Aluminium</b>		
Category:	<b>Passenger Car</b>		
Oil level:	<b>OK</b>		
Registration Certificate Car (BE):	<b>Yes</b>		

**Options**

Radio CD		Central consol F	
GPS storage		Luggage cover	
GPS storage	<b>SD</b>	Type of Tow bar	<b>No Tow bar</b>
Windows electric F			
Windows electric R			
Cruise Control			
Steering wheel multifunctional			
Radio multimedia			
Type of headlighting	<b>Headlighting Halogen</b>		
Type of GPS	<b>GPS big screen color</b>		
Type of Lining	<b>Lining semi-leather</b>		
Type of climate control	<b>Manual climate control</b>		

**Limited Technical Inspection**

Airco functioning	<b>OK</b>	Battery functioning	<b>Yes</b>
Tires wear profile	<b>OK</b>	Power steering	<b>Yes</b>
Idle position	<b>OK</b>	Sound engine	<b>OK</b>
Engine startingtime	<b>OK</b>	Clutch test	<b>OK</b>
Exhaust gass	<b>OK</b>	Wiper fluid level	<b>OK</b>
Handbrake	<b>OK</b>	Transmission	<b>OK</b>
		Lighting	<b>OK</b>
		Wiperblades	<b>OK</b>

**Degree of wear**

<b>205/55/16/91 V LightMetal</b>				
Summer tyres:	Fr.L.	<b>Michelin: 5 mm</b>	Fr.R.	<b>Michelin: 5 mm</b>
	Re.L.	<b>Michelin: 5 mm</b>	Re.R.	<b>Michelin: 5 mm</b>

**Assistance equipment**

Repair kit	<b>Yes</b>	Compressor	<b>Yes</b>
Number of charging cables (normal)	<b>0</b>		
Number of charging cables (rapid charge)	<b>0</b>		

<b>Total cost ex VAT</b>	<b>304,56</b>
--------------------------	---------------

<b>Door F R, Dent(s), PDR - Paintless dent repair</b>	<b>63,00</b>
---	--------------



Wing R L, Dent(s) and scratch(es), Acceptable 0,00

No pictures to display

Wing R R, Dent(s) and scratch(es), Acceptable 0,00

No pictures to display

Roof pillar R, Dent(s), Acceptable 0,00

No pictures to display

Door F L, Scratch(es), Acceptable 0,00

No pictures to display

Door R R, Dent(s), PDR - Paintless dent repair 63,00



Alloy rim R R, Scratch(es), Acceptable 0,00

No pictures to display

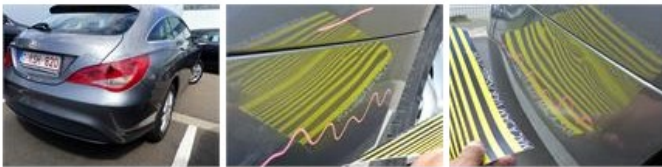
Bumper F, Scratch(es), Acceptable 0,00

No pictures to display

Bumper R, Scratch(es), Acceptable 0,00

No pictures to display

Bumper corner R R, Dent(s), It - Spot repair 115,56



Door R L, Dent(s), PDR - Paintless dent repair 63,00



Door R R, Dent(s) and scratch(es), Acceptable 0,00

No pictures to display