


BMW 5 BERLINE: 1JXD348

Vinnumber:	WBA5E31060D787176	Versionname:	2.0 518D (100KW)
First Registrationdate:	11/03/2015	Fiscalpower:	
Expertise Mileage:	117308	Power Kw:	100
Bodytype:		Body color:	Blue
Gearbox:	Automatic	Paint type:	Metalic
Transmission:	Back	Rims summer:	Aluminium
Fueltype:	Diesel	Oil level:	OK
Maintenance:	IN 11000 KM	Parking lot:	2809
Maintenance:	OK		
Battery functioning:	Yes		
Number of doors:	4		
Number of seats:	5		
Number head rests:	5		
Rims summer:	Aluminium		
Category:	Passenger Car		
Oil level:	OK		
Registration Certificate Car (BE):	Yes		

Options

Radio CD		Central consol F	
GPS storage	HD	Luggage cover	
GPS storage		Front parking sensors	
Windows electric F		Rear parking sensors	
Windows electric R		Type of Tow bar	No Tow bar
Cruise Control			
Steering wheel multifunctional			
Radio multimedia			
Type of headlighting	Headlighting Xenon		
Type of GPS	GPS big screen color		
Type of Lining	Lining leather		
Type of climate control	Autom climate control		

Limited Technical Inspection

Airco functioning	OK	Battery functioning	Yes
Tires wear profile	OK	Power steering	Yes
Idle position	OK	Sound engine	OK
Engine startingtime	OK	Clutch test	OK
Exhaust gass	OK	Wiper fluid level	OK
Handbrake	OK	Transmission	OK
		Lighting	OK
		Wiperblades	OK

Degree of wear

225/55/17/97 Y LightMetal				
Summer tyres:	Fr.L.	Michelin: 5 mm	Fr.R.	Michelin: 5 mm
	Re.L.	Michelin: 4 mm	Re.R.	Michelin: 4 mm

Assistance equipment

Repair kit	Yes	Compressor	Yes
Number of charging cables (normal)	0		
Number of charging cables (rapid charge)	0		

Total cost ex VAT	1570,96
Door F R, Dent(s), Acceptable	0,00

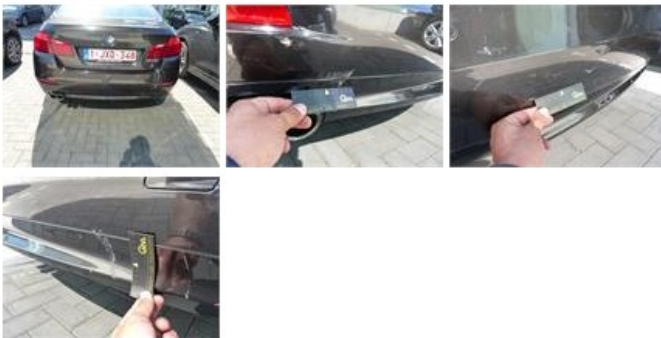
Door F L, Repaired, P - Check

0,00



Bumper R, Dent(s) and scratch(es), LI - Repair and paint (complete)

254,16



Floor covering F L, Tear, E - Replace

264,00



Rearlight R tailgate, Broken, E - Replace

50,00



Grill frame, Scratch(es), E - Replace

25,00



Alloy rim R R, Scratch(es), LI - Repair and paint (complete)

95,00



Bumper F, Dent(s) and scratch(es), LI - Repair and paint (complete)

302,16



Alloy rim F L, Scratch(es), LI - Repair and paint (complete)

95,00



Wing R R, Repaired, Acceptable

0,00



Alloy rim F R, Scratch(es), LI - Repair and paint (complete)

95,00



Door F R, Repaired, P - Check

0,00



Wing F L, Scratch(es), Acceptable

0,00

No pictures to display

Rearview mirror housing R, Scratch(es), Acceptable

0,00

No pictures to display

Centre console, Burned, Smart repair

110,64



Wing R L, Repaired, Acceptable

0,00



Door R L, Repaired, P - Check

0,00



Rearview mirror housing L, Scratch(es), Acceptable

0,00

No pictures to display

Ignition key, Missing, E - Replace

150,00



Side window trim F L, Dent(s), E - Replace

35,00



Windscreen, Stone chip(s), Acceptable

0,00

No pictures to display

Alloy rim R L, Scratch(es), LI - Repair and paint (complete)

95,00



Door R R, Repaired, P - Check

0,00

