



VOLVO XC60: 1HHY839

Vinnumber:	YV1DZ31A1F2649742	Versionname:	XC60 D3 Kinetic 136PK
First Registrationdate:	29/07/2014	Fiscalpower:	
Expertise Mileage:	115782	Power Kw:	100
Bodytype:	SUV	Body color:	Dark Grey
Gearbox:	MAN 6 VIT	Paint type:	Metalic
Transmission:	Front	Rims summer:	Aluminium
Fueltype:	Diesel	Oil level:	OK
Battery functioning:	Yes	Parking lot:	3602
Number of doors:	5		
Number of seats:	5		
Number head rests:	5		
Rims summer:	Aluminium		
Category:	Passenger Car		
Oil level:	OK		
Registration Certificate Car (BE):	Yes		

Options

Radio CD		Central consol F	
GPS storage		Luggage cover	
GPS storage	HD	Front parking sensors	
Windows electric F		Rear parking sensors	
Windows electric R		Type of Tow bar	No Tow bar
Cruise Control			
Steering wheel multifunctional			
Seats F heated			
Radio multimedia			
Type of headlighting	Headlighting Xenon		
Type of GPS	GPS big screen color		
Type of Lining	Lining leather		
Type of climate control	Autom climate control		

Limited Technical Inspection

Airco functioning	OK	Battery functioning	Yes
Tires wear profile	OK	Power steering	Yes
Idle position	OK	Sound engine	OK
Engine startingtime	OK	Clutch test	OK
Exhaust gass	OK	Wiper fluid level	OK
Handbrake	OK	Transmission	OK
		Lighting	OK
		Wiperblades	OK

Degree of wear

235/65/17/108 V LightMetal				
Winter tyres:	Fr.L.	Continental: 6 mm	Fr.R.	Continental: 6 mm
	Re.L.	Continental: 5 mm	Re.R.	Continental: 5 mm

Assistance equipment

Repair kit	Yes	Compressor	Yes
Number of charging cables (normal)	0		
Number of charging cables (rapid charge)	0		

Total cost ex VAT 633,72

Door F L, Scratch(es), Acceptable 0,00

No pictures to display

Windscreen, Repaired, Acceptable 0,00



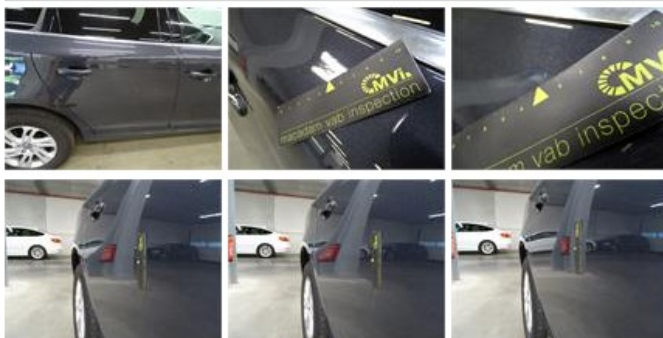
Wing F L, Scratch(es), Acceptable 0,00

No pictures to display

Bumper R, Scratch(es), LI - Repair and paint (complete) 254,16



Door R R, Bad repair, Acceptable 0,00



Door panel R L, Tear, E - Replace 132,00



Bodywork, Not original part, Acceptable 0,00



Spoiler R, Scratch(es), Acceptable 0,00

No pictures to display

Bumper F, Stone chip(s), Acceptable 0,00

No pictures to display

Door panel R R, Tear, E - Replace 132,00



Wing R R, Repaired, Acceptable	0,00
<i>No pictures to display</i>	
Door frame R R, Scratch(es), Acceptable	0,00
<i>No pictures to display</i>	
Wing R L, Scratch(es), Acceptable	0,00
<i>No pictures to display</i>	
Rocker panel inner R R, Dent(s), LI - Repair and paint (complete)	115,56

