



CITROEN JUMPER: 1KNF945

Vinnumber:	VF7YCUMFB12869158	Versionname:	2.2 HDI 110KW 35 L2H2 CLUB
First Registrationdate:	2/06/2015	Fiscalpower:	
Expertise Mileage:	166166	Power Kw:	110
Bodytype:	Transporter	Body color:	White
Gearbox:	MAN 6 VIT	Paint type:	Opaque
Transmission:	Front	Rims summer:	Steel
Fueltype:	Diesel	Oil level:	OK
Battery functioning:	Yes	Parking lot:	LCV05
Number of doors:	6		
Number of seats:	3		
Number head rests:	3		
Rims summer:	Steel		
Category:	Light Commercial Vehicle		
Oil level:	OK		
Registration Certificate Car (BE):	Yes		

Options

Radio CD		Central consol F	
GPS storage	HD	Rear parking sensors	
GPS storage		Type of Tow bar	No Tow bar
Windows electric F			
Cruise Control			
Steering wheel multifunctional			
Radio multimedia			
Type of headlighting	Headlighting Halogen		
Type of GPS	GPS big screen color		
Type of Lining	Lining fabrics		
Type of climate control	Manual climate control		

Limited Technical Inspection

Airco functioning	OK	Battery functioning	Yes
Tires wear profile	OK	Power steering	Yes
Idle position	OK	Sound engine	OK
Engine startingtime	OK	Clutch test	OK
Exhaust gass	OK	Wiper fluid level	OK
Handbrake	OK	Transmission	OK
		Lighting	OK
		Wiperblades	OK

Degree of wear

	225/70/15/110 S Steel			
Summer tyres:	Fr.L.	Bridgestone: 6 mm	Fr.R.	Bridgestone: 6 mm
	Re.L.	Bridgestone: 8 mm	Re.R.	Bridgestone: 8 mm

Assistance equipment

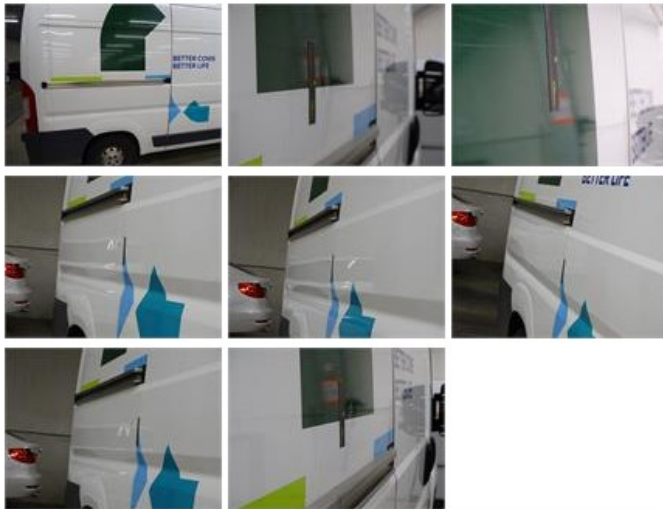
Spare wheel	Yes	Jack	Yes
Number of charging cables (normal)	0		
Number of charging cables (rapid charge)	0		

Total cost ex VAT	2485,67
Wing F R, Scratch(es), Acceptable	0,00
<i>No pictures to display</i>	
Door R R, Dent(s) and scratch(es), LI - Repair and paint (complete)	238,76



Wing R R, Dent(s), LI - Repair and paint (complete)

231,15



Wing R L, Dent(s) and scratch(es), LI - Repair and paint (complete)

231,15



Roof pillar R, Scratch(es), Acceptable

0,00

No pictures to display

Rocker panel inner F L, Scratch(es), Acceptable

0,00

No pictures to display

A-pillar right, Scratch(es), Acceptable

0,00

No pictures to display

Roof pillar L, Dent(s) and scratch(es), LI - Repair and paint (complete)

165,14



Central pillar R, Scratch(es), Acceptable

0,00

No pictures to display

Door F L, Scratch(es), Acceptable

0,00

No pictures to display

Door R L, Dent(s) and scratch(es), Acceptable

0,00

No pictures to display

Rearview mirror housing R, Scratch(es), Smart repair 110,64



Sill outer L, Scratch(es), LI - Repair and paint (complete) 232,88



Bumper F, Scratch(es), Acceptable 0,00

No pictures to display

Rear floor , Deformed / Strained, LI - Repair and paint (complete) 469,00



Bodywork, Not original part, Acceptable 0,00

No pictures to display

Trunk door R R, Dent(s) and scratch(es), It - Spot repair 115,56



Door F R, Dent(s) and scratch(es), LI - Repair and paint (complete) 238,76



Door panel R R, Tear, E - Replace 91,50



Trunk door R L, Dent(s) and scratch(es), Acceptable 0,00

No pictures to display

Roof, Dent(s), LI - Repair and paint (complete) 361,13



No pictures to display