


**BMW 2 GRAN TOURER: 1LBL129**

Vinnumber:	<b>WBA2E31010P791086</b>	Versionname:	<b>1.5 216D GRAN TOURER</b>
First Registrationdate:	<b>11/08/2015</b>	Fiscalpower:	
Expertise Mileage:	<b>78822</b>	Power Kw:	<b>85</b>
Bodytype:		Body color:	<b>Black</b>
Gearbox:	<b>Automatic</b>	Paint type:	<b>Metallic</b>
Transmission:	<b>Front</b>	Rims summer:	<b>Aluminium</b>
Fueltype:	<b>Diesel</b>	Oil level:	<b>OK</b>
Battery functioning:	<b>Yes</b>	Parking lot:	<b>4509</b>
Number of doors:	<b>5</b>		
Number of seats:	<b>5</b>		
Number head rests:	<b>5</b>		
Rims summer:	<b>Aluminium</b>		
Category:	<b>Passenger Car</b>		
Oil level:	<b>OK</b>		
Registration Certificate Car (BE):	<b>Yes</b>		

**Options**

Windows electric F	Central consol F
Windows electric R	Front parking sensors
Cruise Control	Rear parking sensors
Steering wheel multifunctional	Type of Tow bar
Seats F heated	<b>No Tow bar</b>
Radio multimedia	
Type of headlighting	<b>Headlighting Halogen</b>
Type of GPS	<b>GPS big screen color</b>
Type of Lining	<b>Lining artificial leather</b>
Type of climate control	<b>Autom climate control</b>

**Limited Technical Inspection**

Airco functioning	<b>OK</b>	Battery functioning	<b>Yes</b>
Tires wear profile	<b>OK</b>	Power steering	<b>Yes</b>
Idle position	<b>OK</b>	Sound engine	<b>OK</b>
Engine startingtime	<b>OK</b>	Clutch test	<b>OK</b>
Exhaust gass	<b>OK</b>	Wiper fluid level	<b>OK</b>
Handbrake	<b>OK</b>	Transmission	<b>OK</b>
		Lighting	<b>OK</b>
		Wiperblades	<b>OK</b>

**Degree of wear**

	<b>205/60/16/92 V LightMetal</b>			
Summer tyres:	Fr.L.	<b>Michelin: 4 mm</b>	Fr.R.	<b>Michelin: 4 mm</b>
	Re.L.	<b>Michelin: 4 mm</b>	Re.R.	<b>Michelin: 4 mm</b>

**Assistance equipment**

Repair kit	<b>Yes</b>	Compressor	<b>Yes</b>
Number of charging cables (normal)	<b>0</b>		
Number of charging cables (rapid charge)	<b>0</b>		

Total cost ex VAT	1586,15
Door R L, Dent(s), LI - Repair and paint (complete)	318,35



Alloy rim F R, Scratch(es), LI - Repair and paint (complete) 95,00



Door F R, Scratch(es), Acceptable 0,00

No pictures to display

Engine protective plate, Deformed / Strained, E - Replace 74,00



Wing R R, Scratch(es), Acceptable 0,00

No pictures to display

Alloy rim R R, Scratch(es), Acceptable 0,00

No pictures to display

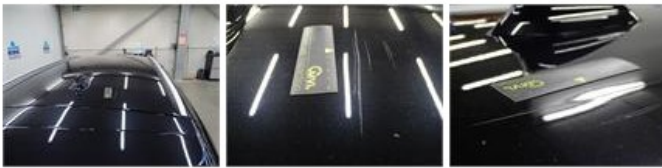
Bumper F, Scratch(es), LI - Repair and paint (complete) 211,80



Sill outer R, Scratch(es), LI - Repair and paint (complete) 310,50



Roof, Dent(s) and scratch(es), LI - Repair and paint (complete) 481,50



Alloy rim R L, Scratch(es), LI - Repair and paint (complete) 95,00

