



**MERCEDES GLA: UJ9022**

Vinnumber:	<b>WDC1569081J140599</b>	Versionname:	<b>2.1 GLA 200 CDI URBAN</b>
First Registrationdate:	<b>31/07/2015</b>	Fiscalpower:	
Expertise Mileage:	<b>184719</b>	Power Kw:	<b>100</b>
Bodytype:		Body color:	<b>Grey</b>
Gearbox:	<b>MAN 6 VIT</b>	Paint type:	<b>Metalic</b>
Transmission:	<b>Front</b>	Rims summer:	<b>Aluminium</b>
Fueltype:	<b>Diesel</b>	Oil level:	<b>OK</b>
Battery functioning:	<b>Yes</b>	Parking lot:	<b>2123</b>
Number of doors:	<b>5</b>		
Number of seats:	<b>5</b>		
Number head rests:	<b>1</b>		
Rims summer:	<b>Aluminium</b>		
Category:	<b>Passenger Car</b>		
Oil level:	<b>OK</b>		
Registration Certificate Car (BE):	<b>Yes</b>		

**Options**

Radio CD	Luggage cover
Windows electric F	Type of Tow bar
Windows electric R	<b>No Tow bar</b>
Steering wheel multifunctional	
Radio multimedia	
Type of headlighting	<b>Headlighting Halogen</b>
Type of GPS	<b>GPS big screen color</b>
Type of Lining	<b>Lining semi-artificial leather</b>
Type of climate control	<b>Manual climate control</b>

**Limited Technical Inspection**

Airco functioning	<b>OK</b>	Battery functioning	<b>Yes</b>
Tires wear profile	<b>OK</b>	Power steering	<b>Yes</b>
Idle position	<b>OK</b>	Sound engine	<b>OK</b>
Engine startingtime	<b>OK</b>	Clutch test	<b>OK</b>
Exhaust gass	<b>OK</b>	Wiper fluid level	<b>OK</b>
Handbrake	<b>OK</b>	Transmission	<b>OK</b>
		Lighting	<b>OK</b>
		Wiperblades	<b>OK</b>

**Degree of wear**

	<b>235/50/18/101 Y LightMetal</b>			
Summer tyres:	Fr.L.	<b>Michelin: 3 mm</b>	Fr.R.	<b>Michelin: 3 mm</b>
	Re.L.	<b>Michelin: 5 mm</b>	Re.R.	<b>Michelin: 5 mm</b>

**Assistance equipment**

Number of charging cables (normal)	<b>0</b>
Number of charging cables (rapid charge)	<b>0</b>

<b>Total cost ex VAT</b>	<b>620,91</b>
<b>Door R R, Scratch(es), LI - Repair and paint (complete)</b>	<b>318,35</b>



Roof pillar L, Dent(s), PDR - Paintless dent repair

63,00



Wing R L, Scratch(es), Acceptable

0,00

*No pictures to display*

Spoiler R, Broken, E - Replace

124,00



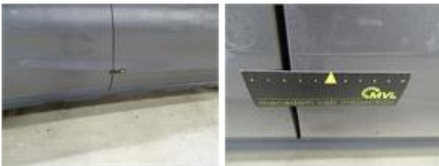
Wing R R, Scratch(es), Acceptable

0,00

*No pictures to display*

Door F R, Scratch(es), It - Spot repair

115,56



Alloy rim F R, Scratch(es), Acceptable

0,00

*No pictures to display*

Bumper F, Scratch(es), Acceptable

0,00

*No pictures to display*