



**VOLVO XC90: TJ4039**

Vinnumber:	<b>YV1LFA4BCG1013204</b>	Versionname:	<b>2.0 D5 4WD GEARTRONIC MOMENTUM 7PL.</b>
First Registrationdate:	<b>24/07/2015</b>	Fiscalpower:	
Expertise Mileage:	<b>162925</b>	Power Kw:	<b>165</b>
Bodytype:	<b>SUV</b>	Body color:	<b>Black</b>
Gearbox:	<b>Automatic</b>	Paint type:	<b>Metalic</b>
Transmission:	<b>4 Weel</b>	Rims summer:	<b>Aluminium</b>
Fueltype:	<b>Diesel</b>	Oil level:	<b>OK</b>
Battery functioning:	<b>Yes</b>	Parking lot:	<b>2812</b>
Number of doors:	<b>5</b>		
Number of seats:	<b>7</b>		
Number head rests:	<b>7</b>		
Rims summer:	<b>Aluminium</b>		
Category:	<b>Passenger Car</b>		
Oil level:	<b>OK</b>		

**Options**

Radio CD		Central consol F	
GPS storage		Luggage cover	
GPS storage	<b>HD</b>	Front parking sensors	
Windows electric F		Rear parking sensors	
Windows electric R		Type of Tow bar	<b>Tow bar fixed</b>
Cruise Control			
Steering wheel multifunctional			
Radio multimedia			
Type of headlighting	<b>Headlighting Halogen</b>		
Type of GPS	<b>GPS big screen color</b>		
Type of Lining	<b>Lining leather</b>		
Type of climate control	<b>Autom climate control</b>		

**Limited Technical Inspection**

Airco functioning	<b>OK</b>	Battery functioning	<b>Yes</b>
Tires wear profile	<b>OK</b>	Power steering	<b>Yes</b>
Idle position	<b>OK</b>	Sound engine	<b>OK</b>
Engine startingtime	<b>OK</b>	Clutch test	<b>OK</b>
Exhaust gass	<b>OK</b>	Wiper fluid level	<b>OK</b>
Handbrake	<b>OK</b>	Transmission	<b>OK</b>
		Lighting	<b>OK</b>
		Wiperblades	<b>OK</b>

**Degree of wear**

	<b>235/55/19/105 H LightMetal</b>			
Winter tyres:	Fr.L.	<b>Continental: 4 mm</b>	Fr.R.	<b>Continental: 4 mm</b>
	Re.L.	<b>Continental: 6 mm</b>	Re.R.	<b>Continental: 6 mm</b>

**Assistance equipment**

Repair kit	<b>Yes</b>	Compressor	<b>Yes</b>
Number of charging cables (normal)	<b>0</b>		
Number of charging cables (rapid charge)	<b>0</b>		

Total cost ex VAT	2453,31
Roof, Scratch(es), Acceptable	0,00
<i>No pictures to display</i>	
Alloy rim F R, Scratch(es), LI - Repair and paint (complete)	95,00



Wing trim R R, Scratch(es), Acceptable 0,00

No pictures to display

Alloy rim R R, Scratch(es), LI - Repair and paint (complete) 95,00



Tailgate, Scratch(es), Acceptable 0,00

No pictures to display

Wing moulding F L, Scratch(es), Acceptable 0,00

No pictures to display

Door F R, Dent(s) and scratch(es), LI - Repair and paint (complete) 382,02



Door F L, Dent(s) and scratch(es), LI - Repair and paint (complete) 382,02



Wing R L, Scratch(es), Acceptable 0,00

No pictures to display

Spoiler R, Scratch(es), Acceptable 0,00

No pictures to display

Rocker panel inner R L, Dent(s), Acceptable 0,00

No pictures to display





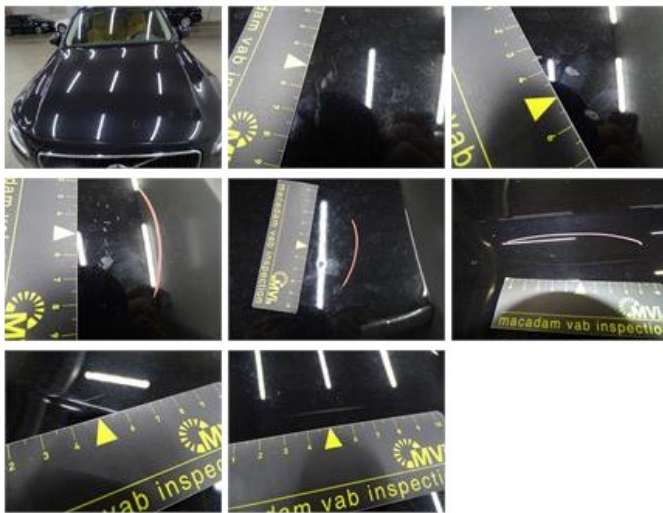
Bumper F, Scratch(es), Acceptable

0,00

No pictures to display

Bonnet, Dent(s) and scratch(es), LI - Repair and paint (complete)

348,09



Alloy rim F L, Scratch(es), LI - Repair and paint (complete)

95,00



Bumper R, Scratch(es), LI - Repair and paint (complete)

254,16



Wing moulding F R, Scratch(es), Acceptable

0,00

No pictures to display

Door R L, Scratch(es), Acceptable

0,00

No pictures to display

Rear window, Scratch(es), E - Replace

420,00

