


VOLKSWAGEN Polo: 1GUH320

| | | | |
|------------------------------------|--------------------------|--------------|---|
| Vinnnumber: | WVWZZZ6RZEY250656 | Versionname: | POLO BER BlueMotion DPF 89g 75PK |
| First Registrationdate: | 2/05/2014 | Fiscalpower: | |
| Expertise Mileage: | 39665 | Power Kw: | 55 |
| Bodytype: | Hatchback | Body color: | Silver |
| Gearbox: | MAN 5 VIT | Paint type: | Metalic |
| Transmission: | Front | Rims summer: | Aluminium |
| Fueltype: | Diesel | Oil level: | OK |
| Battery functioning: | Yes | Parking lot: | 3123 |
| Number of doors: | 5 | | |
| Number of seats: | 5 | | |
| Number head rests: | 5 | | |
| Rims summer: | Aluminium | | |
| Category: | Passenger Car | | |
| Oil level: | OK | | |
| Registration Certificate Car (BE): | Yes | | |

Options

| | | | |
|-------------------------|-------------------------------|------------------|-------------------|
| Radio CD | | Central consol F | |
| GPS storage | | Luggage cover | |
| GPS storage | HD | Type of Tow bar | No Tow bar |
| Windows electric F | | | |
| Cruise Control | | | |
| Radio multimedia | | | |
| Type of headlighting | Headlighting Halogen | | |
| Type of GPS | GPS big screen color | | |
| Type of Lining | Lining fabrics | | |
| Type of climate control | Manual climate control | | |

Limited Technical Inspection

| | | | |
|---------------------|-----------|---------------------|------------|
| Airco functioning | OK | Battery functioning | Yes |
| Tires wear profile | OK | Power steering | Yes |
| Idle position | OK | Sound engine | OK |
| Engine startingtime | OK | Clutch test | OK |
| Exhaust gass | OK | Wiper fluid level | OK |
| Handbrake | OK | Transmission | OK |
| | | Lighting | OK |
| | | Wiperblades | OK |

Degree of wear

| | | | | |
|---------------|----------------------------------|---------------------|-------|---------------------|
| | 185/60/15/84 H LightMetal | | | |
| Summer tyres: | Fr.L. | Dunlop: 4 mm | Fr.R. | Dunlop: 4 mm |
| | Re.L. | Dunlop: 6 mm | Re.R. | Dunlop: 6 mm |

Assistance equipment

| | | | |
|--|------------|------------|------------|
| Repair kit | Yes | Compressor | Yes |
| Number of charging cables (normal) | 0 | | |
| Number of charging cables (rapid charge) | 0 | | |

| | |
|---|--------|
| Total cost ex VAT | 756,36 |
| Bumper R, Scratch(es), LI - Repair and paint (complete) | 169,44 |



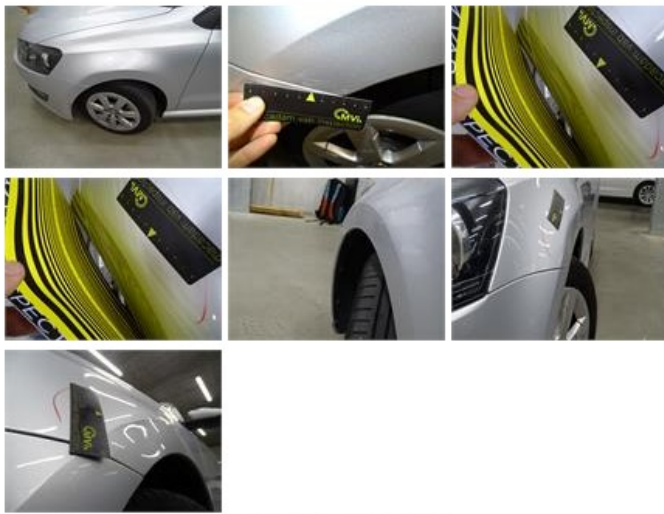
Windscreen, Scratch(es), Acceptable

0,00



Wing F L, Dent(s) and scratch(es), LI - Repair and paint (complete)

176,14



Tailgate, Scratch(es), LI - Repair and paint (complete)

241,34



Door F L, Scratch(es), Acceptable

0,00

No pictures to display

Door F R, Bad repair, Acceptable

0,00

No pictures to display

Bumper F, Scratch(es), LI - Repair and paint (complete)

169,44



Wing F R, Scratch(es), Acceptable

0,00

| | |
|---|------|
| Trunk lid covering R, Scratch(es), Acceptable | 0,00 |
| <i>No pictures to display</i> | |