



**MERCEDES C BREAK: 1KDF141**

Vinnumber:	WDD2052361F183306	Versionname:	1.6 C 180 BLUETEC AVANTGARDE
First Registrationdate:	7/04/2015	Fiscalpower:	
Expertise Mileage:	90277	Power Kw:	85
Bodytype:	Break	Body color	Grey
Gearbox:	MAN 6 VIT	Paint type	Metalic
Transmission:		Rims summer	Aluminium
Fueltype:	Diesel	Oil level	OK
Battery functioning	Yes	Parking lot	1325
Number of doors	5		
Number of seats	5		
Number head rests	5		
Rims summer	Aluminium		
Category	Passenger Car		
Oil level	OK		
Registration Certificate Car (BE)	Yes		

**Options**

Radio CD	Central consol F
Windows electric F	Luggage cover
Windows electric R	Front parking sensors
Cruise Control	Rear parking sensors
Steering wheel multifunctional	Type of Tow bar
Radio multimedia	No Tow bar
Type of headlighting	Headlighting Halogen
Type of GPS	GPS big screen color
Type of Lining	Lining semi-leather
Type of climate control	Autom climate control

**Limited Technical Inspection**

Airco functioning	OK	Battery functioning	Yes
Tires wear profile	OK	Power steering	Yes
Idle position	OK	Sound engine	OK
Engine startingtime	OK	Clutch test	OK
Exhaust gass	OK	Wiper fluid level	OK
Handbrake	OK	Transmission	OK
		Lighting	OK
		Wiperblades	OK

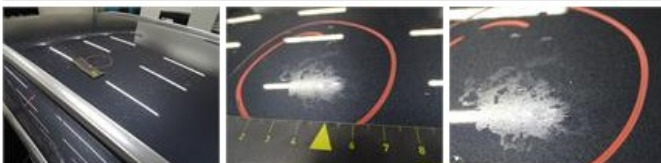
**Degree of wear**

Summer tyres:	225/50/17/94 W LightMetal			
	Fr.L.	Goodyear: 4 mm	Fr.R.	Goodyear: 4 mm
	Re.L.	Goodyear: 5 mm	Re.R.	Goodyear: 5 mm

**Assistance equipment**

Repair kit	Yes	Compressor	Yes
------------	-----	------------	-----

Total cost ex VAT	481,50
Roof, Chemical polution, LI - Repair and paint (complete)	481,50



*No pictures to display*