



BMW 1: 1PGX293

Vinnumber:	WBA1C91060J523318	Versionname:	
First Registrationdate:	11/06/2014	Fiscalpower:	
Expertise Mileage:	120349	Power Kw:	85
Bodytype:		Body color:	White
Gearbox:	MAN 6 VIT	Paint type:	Opaque
Transmission:	Back	Rims summer:	Steel
Fueltype:	Diesel	Oil level:	OK
Battery functioning:	Yes	Parking lot:	4809
Number of doors:	5		
Number of seats:	5		
Number head rests:	5		
Rims summer:	Steel		
Category:	Passenger Car		
Oil level:	OK		
Registration Certificate Car (BE):	Yes		

Options

Radio CD	Central consol F
Windows electric F	Luggage cover
Windows electric R	Rear parking sensors
Cruise Control	Type of Tow bar
Steering wheel multifunctional	No Tow bar
Radio multimedia	
Type of headlighting	Headlighting Halogen
Type of GPS	No GPS
Type of Lining	Lining fabrics
Type of climate control	Manual climate control

Limited Technical Inspection

Airco functioning	OK	Battery functioning	Yes
Tires wear profile	OK	Power steering	Yes
Idle position	OK	Sound engine	OK
Engine startingtime	OK	Clutch test	OK
Exhaust gass	OK	Wiper fluid level	OK
Handbrake	OK	Transmission	OK
		Lighting	OK
		Wiperblades	OK

Degree of wear

205/55/16/91 H Steel			
Winter tyres:	Fr.L.	Fr.R.	Goodyear: 4 mm
	Re.L.	Re.R.	Goodyear: 4 mm

Assistance equipment

Repair kit	Yes	Compressor	Yes
Number of charging cables (normal)	0		
Number of charging cables (rapid charge)	0		

Total cost ex VAT	753,30
Bonnet, Dent(s), Acceptable	0,00
<i>No pictures to display</i>	
Wheel cover F R, Scratch(es), E - Replace	30,00



Wheel cover F L, Scratch(es), Acceptable 0,00

No pictures to display

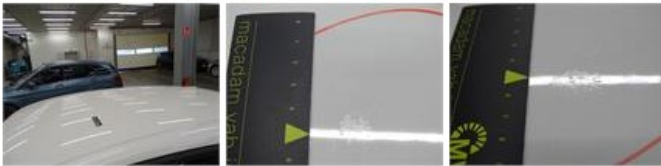
Wheel cover R R, Scratch(es), E - Replace 30,00



Bumper F, Bad repair, Acceptable 0,00



Roof, Chemical polution, LI - Repair and paint (complete) 481,50



Bumper R, Scratch(es), LI - Repair and paint (complete) 211,80



Bodywork, Not original part, Acceptable 0,00

No pictures to display