



BMW 5: AD7191			
Vinnumber:	<b>WBA5L51030D679535</b>	Versionname:	<b>5 TOURING 520dXA 184PK Aut.</b>
First Registrationdate:	<b>4/08/2014</b>	Fiscalpower:	
Expertise Mileage:	<b>139504</b>	Power Kw:	<b>140</b>
Bodytype:	<b>Break</b>	Body color:	<b>Dark Blue</b>
Gearbox:	<b>Automatic</b>	Paint type:	<b>Metalic</b>
Transmission:		Rims summer:	<b>Aluminium</b>
Fueltype:	<b>Diesel</b>	Oil level:	<b>OK</b>
Battery functioning:	<b>Yes</b>	Parking lot:	<b>2412</b>
Number of doors:	<b>5</b>		
Number of seats:	<b>5</b>		
Number head rests:	<b>5</b>		
Rims summer:	<b>Aluminium</b>		
Category:	<b>Passenger Car</b>		
Oil level:	<b>OK</b>		

Options			
Radio CD		Central consol F	
Windows electric F		Luggage cover	
Windows electric R		Front parking sensors	
Cruise Control		Rear parking sensors	
Steering wheel multifunctional		Type of Tow bar	<b>Tow bar fixed</b>
Seats F heated			
Radio multimedia			
Type of headlighting	<b>Headlighting Halogen</b>		
Type of GPS	<b>GPS big screen color</b>		
Type of Lining	<b>Lining leather</b>		
Type of climate control	<b>Autom climate control</b>		
Head-up Display			
Sport seats			

Limited Technical Inspection			
Airco functioning	<b>OK</b>	Battery functioning	<b>Yes</b>
Tires wear profile	<b>OK</b>	Power steering	<b>Yes</b>
Idle position	<b>OK</b>	Sound engine	<b>OK</b>
Engine startingtime	<b>OK</b>	Clutch test	<b>OK</b>
Exhaust gass	<b>OK</b>	Wiper fluid level	<b>OK</b>
Handbrake	<b>OK</b>	Transmission	<b>OK</b>
		Lighting	<b>OK</b>
		Wiperblades	<b>OK</b>

Degree of wear				
	<b>245/45/18/100 Y LightMetal</b>			
Summer tyres:	Fr.L.	<b>Pirelli: 6 mm</b>	Fr.R.	<b>Pirelli: 6 mm</b>
	Re.L.	<b>Bridgestone: 4 mm</b>	Re.R.	<b>Bridgestone: 4 mm</b>

Assistance equipment	
Runflat	<b>Yes</b>

Total cost ex VAT	<b>1765,76</b>
Bumper R, Dent(s) and scratch(es), LI - Repair and paint (complete)	<b>254,16</b>



Bonnet, Stone chip(s), Acceptable 0,00

No pictures to display

Bumper F, Dent(s) and scratch(es), LI - Repair and paint (complete) 254,16



Rear window, Scratch(es), E - Replace 420,00



Door R R, Scratch(es), Acceptable 0,00

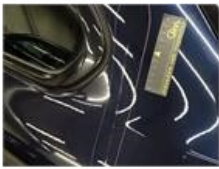
No pictures to display

Sill outer L, Scratch(es), LI - Repair and paint (complete) 372,60



Wing R L, Chemical polution, LI - Repair and paint (complete) 369,84





Alloy rim R R, Scratch(es), LI - Repair and paint (complete)

95,00

