


**SKODA FABIA COMBI: 1NNU402**

Vinnumber:	<b>TMBJE6NJ7GZ118949</b>	Versionname:	<b>1.4 CRTDI 55KW AMBITION</b>
First Registrationdate:	<b>29/03/2016</b>	Fiscalpower:	
Expertise Mileage:	<b>172748</b>	Power Kw:	<b>55</b>
Bodytype:	<b>Break</b>	Body color:	<b>White</b>
Gearbox:	<b>MAN 5 VIT</b>	Paint type:	<b>Opaque</b>
Transmission:	<b>Front</b>	Rims summer:	<b>Steel</b>
Fueltype:	<b>Diesel</b>	Oil level:	<b>OK</b>
Battery functioning:	<b>Yes</b>	Parking lot:	<b>2809</b>
Number of doors:	<b>5</b>		
Number of seats:	<b>5</b>		
Number head rests:	<b>4</b>		
Rims summer:	<b>Steel</b>		
Category:	<b>Passenger Car</b>		
Oil level:	<b>OK</b>		
Registration Certificate Car (BE):	<b>Yes</b>		

**Options**

Windows electric F		Central consol F	
Cruise Control		Luggage cover	
Radio multimedia		Rear parking sensors	
Type of headlighting	<b>Headlighting Halogen</b>	Type of Tow bar	<b>No Tow bar</b>
Type of GPS	<b>No GPS</b>		
Type of Lining	<b>Lining fabrics</b>		
Type of climate control	<b>Manual climate control</b>		

**Limited Technical Inspection**

Airco functioning	<b>OK</b>	Battery functioning	<b>Yes</b>
Tires wear profile	<b>OK</b>	Power steering	<b>Yes</b>
Idle position	<b>OK</b>	Sound engine	<b>OK</b>
Engine startingtime	<b>OK</b>	Clutch test	<b>OK</b>
Exhaust gass	<b>OK</b>	Wiper fluid level	<b>OK</b>
Handbrake	<b>OK</b>	Transmission	<b>OK</b>
		Lighting	<b>OK</b>
		Wiperblades	<b>OK</b>

**Degree of wear**

<b>185/60/15/84 H Steel</b>				
Summer tyres:	Fr.L.	<b>Dunlop: 4 mm</b>	Fr.R.	<b>Dunlop: 4 mm</b>
	Re.L.	<b>Continental: 7 mm</b>	Re.R.	<b>Continental: 7 mm</b>

**Assistance equipment**

Spare wheel	<b>Yes</b>	Jack	<b>Yes</b>
Number of charging cables (normal)	<b>0</b>		
Number of charging cables (rapid charge)	<b>0</b>		

Total cost ex VAT	2464,90
Tailgate, Dent(s) and scratch(es), Acceptable	0,00
<i>No pictures to display</i>	
Rear spoiler, Dent(s), Acceptable	0,00
<i>No pictures to display</i>	
Wing R R, Dent(s) and scratch(es), LI - Repair and paint (complete)	246,56



Windscreen, Crack, E - Replace

413,76



Trunk lid covering R, Scratch(es), Acceptable

0,00

*No pictures to display*

Wing R L, Scratch(es), Acceptable

0,00

*No pictures to display*

Sill outer R, Dent(s) and scratch(es), LI - Repair and paint (complete)

296,40



Floor covering F L, Hole, Smart repair

64,32



Door F L, Scratch(es), Acceptable

0,00

*No pictures to display*

Door R R, Dent(s), LI - Repair and paint (complete)

254,68



Bodywork, Not original part, Acceptable

0,00



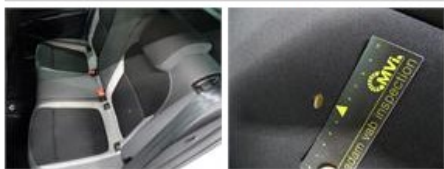
Roof pillar L, Dent(s), Acceptable

0,00

*No pictures to display*

Backrest cover R L, Hole, Smart repair

64,32



Bumper R, Scratch(es), LI - Repair and paint (complete)

169,44



Roof, Dent(s), PDR - Paintless dent repair

201,60



Bumper F, Scratch(es), LI - Repair and paint (complete)

169,44



Floor covering F R, Hole, Smart repair

64,32



Door F R, Dent(s) and scratch(es), Acceptable

0,00

No pictures to display

Wheel cover F L, Scratch(es), E - Replace

24,00



Wheel cover R R, Scratch(es), Acceptable

0,00

No pictures to display

Wheel cover F R, Scratch(es), E - Replace

24,00



Bonnet, Dent(s) and scratch(es), LI - Repair and paint (complete)

232,06



Ceiling, Stain, Acceptable

0,00



Sunblind L, Missing, E - Replace

120,00



Sunblind R, Missing, E - Replace

120,00

