



VOLVO V60: 1LTN027

Vinnumber:	YV1FW74C1G1307446	Versionname:	2.0 D2 SUMMUM
First Registrationdate:	1/12/2015	Fiscalpower:	
Expertise Mileage:	126558	Power Kw:	88
Bodytype:	Break	Body color:	Dark Blue
Gearbox:	MAN 6 VIT	Paint type:	Metalic
Transmission:	Front	Rims summer:	Aluminium
Fueltype:	Diesel	Oil level:	OK
Battery functioning:	Yes	Parking lot:	3631
Number of doors:	5		
Number of seats:	5		
Number head rests:	5		
Rims summer:	Aluminium		
Category:	Passenger Car		
Oil level:	OK		
Registration Certificate Car (BE):	Yes		

Options

Radio CD		Central consol F	
GPS storage		Luggage cover	
GPS storage	HD	Rear parking sensors	
Windows electric F		Type of Tow bar	Tow bar fixed
Windows electric R			
Cruise Control			
Steering wheel multifunctional			
Seats F heated			
Radio multimedia			
Type of headlighting	Headlighting Halogen		
Type of GPS	GPS big screen color		
Type of Lining	Lining leather		
Type of climate control	Autom climate control		

Limited Technical Inspection

Airco functioning	OK	Battery functioning	Yes
Tires wear profile	OK	Power steering	Yes
Idle position	OK	Sound engine	OK
Engine startingtime	OK	Clutch test	OK
Exhaust gass	OK	Wiper fluid level	OK
Handbrake	OK	Transmission	OK
		Lighting	OK
		Wiperblades	OK

Degree of wear

215/50/17/95 W LightMetal				
Summer tyres:	Fr.L.	Michelin: 5 mm	Fr.R.	Michelin: 5 mm
	Re.L.	Michelin: 6 mm	Re.R.	Michelin: 6 mm

Assistance equipment

Repair kit	Yes	Compressor	Yes
Number of charging cables (normal)	0		
Number of charging cables (rapid charge)	0		

Total cost ex VAT	889,15
-------------------	---------------

Tailgate, Scratch(es), Acceptable	0,00
-----------------------------------	-------------

No pictures to display

Alloy rim F L, Scratch(es), LI - Repair and paint (complete)	95,00
--	--------------



Door R R, Scratch(es), Acceptable 0,00

No pictures to display

Rear window, Scratch(es), Acceptable 0,00



Protection plate M, Deformed / Strained, E - Replace 74,00



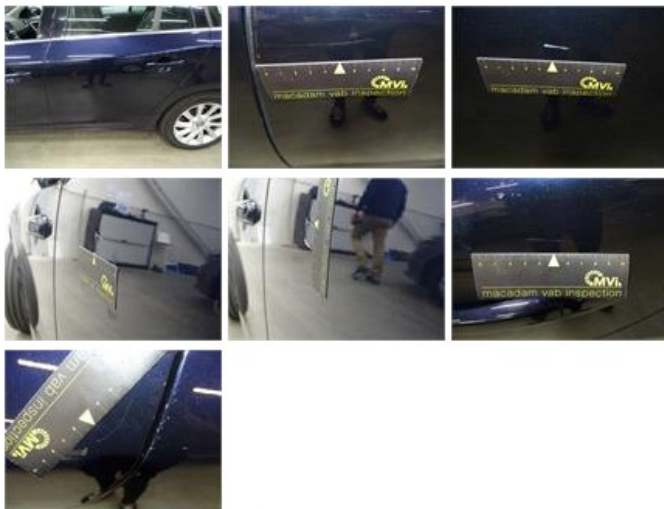
Wing R R, Scratch(es), Acceptable 0,00

No pictures to display

Alloy rim R L, Scratch(es), LI - Repair and paint (complete) 95,00



Door R L, Dent(s) and scratch(es), LI - Repair and paint (complete) 318,35



Bumper F, Scratch(es), Acceptable 0,00

No pictures to display

Roof, Scratch(es), Acceptable 0,00

No pictures to display

Bumper R, Dent(s) and scratch(es), LI - Repair and paint (complete) 211,80



Alloy rim F R, Scratch(es), LI - Repair and paint (complete) 95,00



Windscreen, Scratch(es), Acceptable 0,00

No pictures to display

Door F L, Scratch(es), Acceptable 0,00

No pictures to display