



**VOLVO V40: 1NEL155**

Vinnumber:	<b>VV1MV74L1G2328279</b>	Versionname:	<b>2.0 D2 KINETIC</b>
First Registrationdate:	<b>4/02/2016</b>	Fiscalpower:	
Expertise Mileage:	<b>70507</b>	Power Kw:	<b>88</b>
Bodytype:		Body color:	<b>Silver</b>
Gearbox:	<b>MAN 6 VIT</b>	Paint type:	<b>Metalic</b>
Transmission:	<b>Front</b>	Rims summer:	<b>Aluminium</b>
Fueltype:	<b>Diesel</b>	Oil level:	<b>OK</b>
Battery functioning:	<b>Yes</b>	Parking lot:	<b>3228</b>
Number of doors:	<b>5</b>		
Number of seats:	<b>5</b>		
Number head rests:	<b>5</b>		
Rims summer:	<b>Aluminium</b>		
Category:	<b>Passenger Car</b>		
Oil level:	<b>OK</b>		
Registration Certificate Car (BE):	<b>Yes</b>		

**Options**

Radio CD		Central consol F	
GPS storage	<b>HD</b>	Luggage cover	
GPS storage		Rear parking sensors	
Windows electric F		Type of Tow bar	<b>No Tow bar</b>
Windows electric R			
Cruise Control			
Steering wheel multifunctional			
Seats F heated			
Radio multimedia			
Type of headlighting	<b>Headlighting Halogen</b>		
Type of GPS	<b>GPS big screen color</b>		
Type of Lining	<b>Lining fabrics</b>		
Type of climate control	<b>Autom climate control</b>		

**Limited Technical Inspection**

Airco functioning	<b>OK</b>	Battery functioning	<b>Yes</b>
Tires wear profile	<b>OK</b>	Power steering	<b>Yes</b>
Idle position	<b>OK</b>	Sound engine	<b>OK</b>
Engine startingtime	<b>OK</b>	Clutch test	<b>OK</b>
Exhaust gass	<b>OK</b>	Wiper fluid level	<b>OK</b>
Handbrake	<b>OK</b>	Transmission	<b>OK</b>
		Lighting	<b>OK</b>
		Wiperblades	<b>OK</b>

**Degree of wear**

<b>205/55/16/91 H LightMetal</b>				
Summer tyres:	Fr.L.	<b>Michelin: 4 mm</b>	Fr.R.	<b>Michelin: 4 mm</b>
	Re.L.	<b>Vredestein: 7 mm</b>	Re.R.	<b>Vredestein: 7 mm</b>

**Assistance equipment**

Emergency spare wheel	<b>Yes</b>	Jack	<b>Yes</b>
Number of charging cables (normal)	<b>0</b>		
Number of charging cables (rapid charge)	<b>0</b>		

Total cost ex VAT		1699,17
Bumper R, Scratch(es), LI - Repair and paint (complete)		211,80



Roof pillar R, Bad repair, Acceptable

0,00



Mirror side blinker R, Crack, E - Replace

30,00



Wing R L, Scratch(es), LI - Repair and paint (complete)

308,20



Bumper F, Bad repair, Acceptable

0,00



Sill outer L, Deformed / Strained, Acceptable

0,00





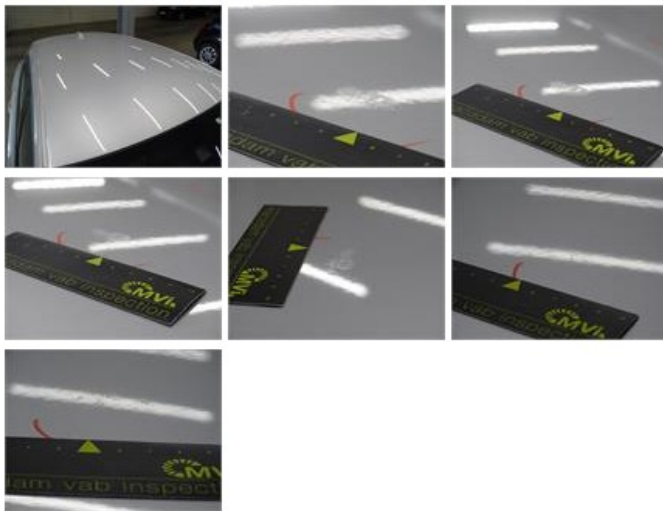
Alloy rim R R, Scratch(es), LI - Repair and paint (complete)

95,00



Roof, Chemical pollution, LI - Repair and paint (complete)

481,50



Bonnet, Chemical pollution, 67 - Polish

0,00

No pictures to display

Wing R R, Dent(s), Acceptable

0,00

No pictures to display

Alloy rim F R, Scratch(es), LI - Repair and paint (complete)

95,00



Door R L, Scratch(es), LI - Repair and paint (complete)

318,35



Alloy rim R L, Scratch(es), LI - Repair and paint (complete)

95,00





Wing F L, Dent(s) and scratch(es), Acceptable	0,00
---	------

*No pictures to display*

Wing F R, Repaired, Acceptable	0,00
--------------------------------	------

*No pictures to display*

Backrest cover R M, Damaged, Smart repair	64,32
---	-------

