



VOLKSWAGEN Golf: 1HJK327

| | | | |
|------------------------------------|--------------------------|--------------|---------------------------------|
| Vinnumber: | WVWZZZAUZFP519854 | Versionname: | GOLF VAR Trendline 105PK |
| First Registrationdate: | 1/08/2014 | Fiscalpower: | |
| Expertise Mileage: | 126336 | Power Kw: | 77 |
| Bodytype: | Break | Body color: | Grey |
| Gearbox: | MAN 5 VIT | Paint type: | Metalic |
| Transmission: | | Rims summer: | Steel |
| Fueltype: | Diesel | Oil level: | OK |
| Battery functioning: | Yes | Parking lot: | 3206 |
| Number of doors: | 5 | | |
| Number of seats: | 5 | | |
| Number head rests: | 5 | | |
| Rims summer: | Steel | | |
| Category: | Passenger Car | | |
| Oil level: | OK | | |
| Registration Certificate Car (BE): | Yes | | |

Options

| | | |
|--------------------------------|------------------------------|----------------------|
| Radio CD | Central consol F | |
| Windows electric F | Luggage cover | |
| Windows electric R | Front parking sensors | |
| Cruise Control | Rear parking sensors | |
| Steering wheel multifunctional | Type of Tow bar | Tow bar fixed |
| Radio multimedia | | |
| Type of headlighting | Headlighting Halogen | |
| Type of GPS | GPS big screen color | |
| Type of Lining | Lining fabrics | |
| Type of climate control | Autom climate control | |
| Adaptive cruise control | | |

Limited Technical Inspection

| | | | |
|---------------------|-----------|---------------------|------------|
| Airco functioning | OK | Battery functioning | Yes |
| Tires wear profile | OK | Power steering | Yes |
| Idle position | OK | Sound engine | OK |
| Engine startingtime | OK | Clutch test | OK |
| Exhaust gass | OK | Wiper fluid level | OK |
| Handbrake | OK | Transmission | OK |
| | | Lighting | OK |
| | | Wiperblades | OK |

Degree of wear

| | | | | |
|-----------------------------|-------|-----------------------|-------|-----------------------|
| 195/65/15/91 H Steel | | | | |
| Summer tyres: | Fr.L. | Goodyear: 4 mm | Fr.R. | Goodyear: 4 mm |
| | Re.L. | Goodyear: 4 mm | Re.R. | Goodyear: 4 mm |

Assistance equipment

| | |
|-----------------------|------------|
| Emergency spare wheel | Yes |
|-----------------------|------------|

| | |
|-----------------------------------|--------|
| Total cost ex VAT | 551,44 |
| Door F R, Scratch(es), Acceptable | 0,00 |
| <i>No pictures to display</i> | |
| Windscreen, Crack, E - Replace | 0,00 |



Tailgate, Dent(s), PDR - Paintless dent repair

82,80



Wing R R, Dent(s), PDR - Paintless dent repair

63,00



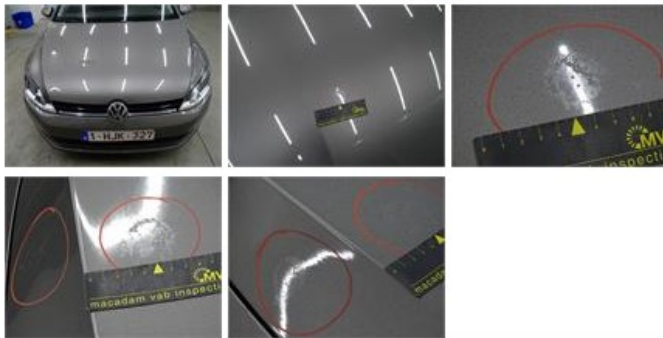
Roof, Dent(s), Acceptable

0,00

No pictures to display

Bonnet, Chemical polution, LI - Repair and paint (complete)

290,08



Rearview mirror housing L, Scratch(es), LI - Repair and paint (complete)

115,56



Bumper R, Scratch(es), Acceptable

0,00

No pictures to display

Bumper F, Scratch(es), Acceptable

0,00

No pictures to display