


**AUDI A4 AVANT: 1KCB301**

Vinnumber:	<b>WAUZZZ8K7FA115833</b>	Versionname:	<b>2.0 TDI ULTRA 100KW</b>
First Registrationdate:	<b>30/03/2015</b>	Fiscalpower:	
Expertise Mileage:	<b>42856</b>	Power Kw:	<b>100</b>
Bodytype:	<b>Break</b>	Body color:	<b>Black</b>
Gearbox:	<b>MAN 6 VIT</b>	Paint type:	<b>Metalic</b>
Transmission:	<b>Front</b>	Rims summer:	<b>Aluminium</b>
Fueltype:	<b>Diesel</b>	Oil level:	<b>OK</b>
Battery functioning:	<b>Yes</b>	Parking lot:	<b>1411</b>
Number of doors:	<b>5</b>		
Number of seats:	<b>5</b>		
Number head rests:	<b>5</b>		
Rims summer:	<b>Aluminium</b>		
Category:	<b>Passenger Car</b>		
Oil level:	<b>OK</b>		
Registration Certificate Car (BE):	<b>Yes</b>		

**Options**

Radio CD		Central consol F	
GPS storage		Luggage cover	
GPS storage	<b>DVD</b>	Rear parking sensors	
Windows electric F		Type of Tow bar	<b>No Tow bar</b>
Windows electric R			
Cruise Control			
Steering wheel multifunctional			
Seats F heated			
Radio multimedia			
Type of headlighting	<b>Headlighting Xenon</b>		
Type of GPS	<b>GPS big screen color</b>		
Type of Lining	<b>Lining leather</b>		
Type of climate control	<b>Autom climate control</b>		

**Limited Technical Inspection**

Airco functioning	<b>OK</b>	Battery functioning	<b>Yes</b>
Tires wear profile	<b>OK</b>	Power steering	<b>Yes</b>
Idle position	<b>OK</b>	Sound engine	<b>OK</b>
Engine startingtime	<b>OK</b>	Clutch test	<b>OK</b>
Exhaust gass	<b>OK</b>	Wiper fluid level	<b>OK</b>
Handbrake	<b>OK</b>	Transmission	<b>OK</b>
		Lighting	<b>OK</b>
		Wiperblades	<b>OK</b>

**Degree of wear**

<b>205/60/16/92 V LightMetal</b>				
Summer tyres:	Fr.L.	<b>Michelin: 5 mm</b>	Fr.R.	<b>Michelin: 5 mm</b>
	Re.L.	<b>Michelin: 3 mm</b>	Re.R.	<b>Michelin: 3 mm</b>

**Assistance equipment**

Emergency spare wheel	<b>Yes</b>
Number of charging cables (normal)	<b>0</b>
Number of charging cables (rapid charge)	<b>0</b>

Total cost ex VAT	1383,76
-------------------	---------

Rearview mirror housing L, Scratch(es), Acceptable	0,00
--	------

*No pictures to display*

Bumper R, Scratch(es), LI - Repair and paint (complete)	211,80
---	--------



Door R L, Chemical polution, LI - Repair and paint (complete)

318,35



Wing R L, Chemical polution, Acceptable

0,00

No pictures to display

Alloy rim R L, Scratch(es), Acceptable

0,00

No pictures to display

Floor covering R, Stain, Cleaning

25,00



Bumper F, Scratch(es), Acceptable

0,00

No pictures to display

Door F L, Dent(s) and scratch(es), LI - Repair and paint (complete)

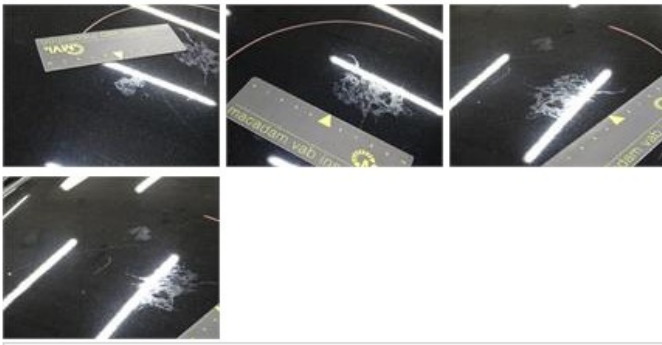
318,35



Bonnet, Chemical polution, LI - Repair and paint (complete)

290,08





Wing F L, Scratch(es), LI - Repair and paint (complete)	220,18
---	--------



Moulding windscreen R, Damaged, Acceptable	0,00
--	------

*No pictures to display*

Door R R, Scratch(es), Acceptable	0,00
-----------------------------------	------

*No pictures to display*