



BMW 2 ACTIVE TOURER: 1LBL748

| | | | |
|------------------------------------|--------------------------|--------------|-------------------------------|
| Vinnumber: | WBA2B31040V543760 | Versionname: | 1.5 216D ACTIVE TOURER |
| First Registrationdate: | 11/08/2015 | Fiscalpower: | |
| Expertise Mileage: | 107579 | Power Kw: | 85 |
| Bodytype: | | Body color: | Grey |
| Gearbox: | MAN 6 VIT | Paint type: | Metalic |
| Transmission: | Front | Rims summer: | Aluminium |
| Fueltype: | Diesel | Oil level: | OK |
| Battery functioning: | Yes | Parking lot: | 3408 |
| Number of doors: | 5 | | |
| Number of seats: | 5 | | |
| Number head rests: | 5 | | |
| Rims summer: | Aluminium | | |
| Category: | Passenger Car | | |
| Oil level: | OK | | |
| Registration Certificate Car (BE): | Yes | | |

Options

| | | | |
|--------------------------------|----------------------------------|----------------------|-------------------|
| GPS storage | HD | Central consol F | |
| GPS storage | | Luggage cover | |
| Windows electric F | | Rear parking sensors | |
| Windows electric R | | Type of Tow bar | No Tow bar |
| Cruise Control | | | |
| Steering wheel multifunctional | | | |
| Radio multimedia | | | |
| Type of headlighting | Headlighting Halogen | | |
| Type of GPS | GPS big screen color | | |
| Type of Lining | Lining artificial leather | | |
| Type of climate control | Autom climate control | | |

Limited Technical Inspection

| | | | |
|---------------------|-----------|---------------------|------------|
| Airco functioning | OK | Battery functioning | Yes |
| Tires wear profile | OK | Power steering | Yes |
| Idle position | OK | Sound engine | OK |
| Engine startingtime | OK | Clutch test | OK |
| Exhaust gass | OK | Wiper fluid level | OK |
| Handbrake | OK | Transmission | OK |
| | | Lighting | OK |
| | | Wiperblades | OK |

Degree of wear

| | | | | |
|----------------------------------|-------|-----------------------|-------|-----------------------|
| 205/60/16/92 V LightMetal | | | | |
| Summer tyres: | Fr.L. | Michelin: 5 mm | Fr.R. | Michelin: 5 mm |
| | Re.L. | Kumho: 4 mm | Re.R. | Kumho: 4 mm |

Assistance equipment

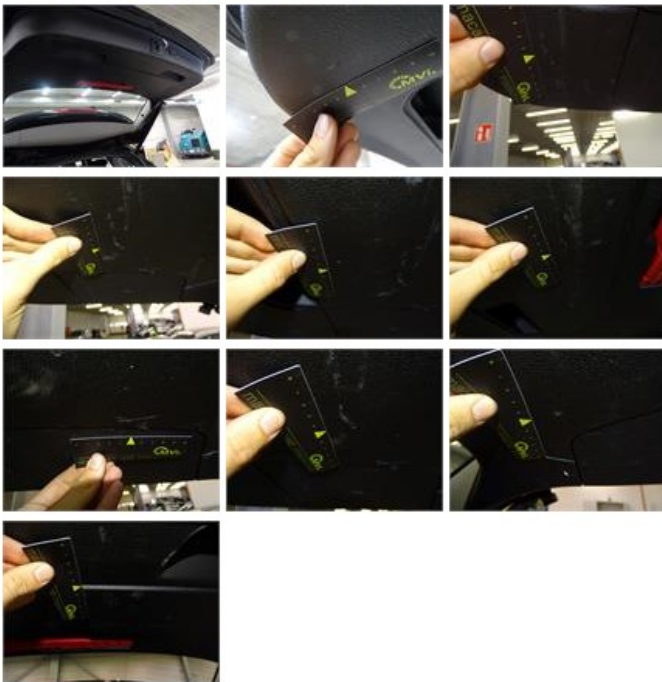
| | | | |
|--|------------|------------|------------|
| Repair kit | Yes | Compressor | Yes |
| Number of charging cables (normal) | 0 | | |
| Number of charging cables (rapid charge) | 0 | | |

| | |
|--|---------------|
| Total cost ex VAT | 671,32 |
| Protection plate M, Deformed / Strained, E - Replace | 74,00 |



Trunk lid covering R, Scratch(es), Smart repair

110,64



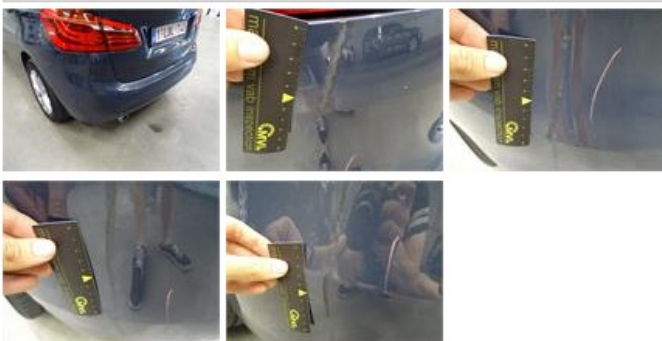
Alloy rim R L, Scratch(es), Acceptable

0,00



Bumper R, Scratch(es), LI - Repair and paint (complete)

211,80



Rocker panel inner R R, Scratch(es), Acceptable

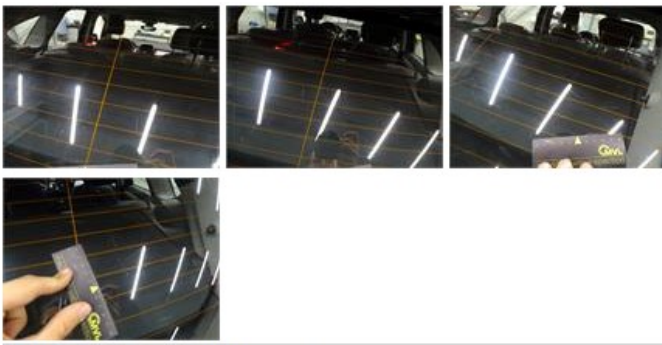
0,00

No pictures to display

Rear window, Scratch(es), E - Replace

0,00





Backrest cover F L, Scratch(es), Smart repair 64,32



Alloy rim F R, Scratch(es), LI - Repair and paint (complete) 95,00



Roof pillar R, Dent(s), It - Spot repair 115,56



Wing R R, Bad repair, Acceptable 0,00



Windscreen, Repaired, Acceptable 0,00



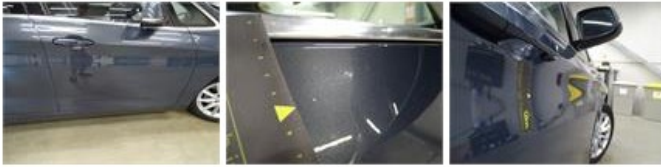
Door R R, Bad repair, Acceptable

0,00



Door F R, Bad repair, Acceptable

0,00



Wing F L, Dent(s), Acceptable

0,00



Alloy rim F L, Scratch(es), Acceptable

0,00



Door R L, Scratch(es), Acceptable

0,00

No pictures to display