



**BMW 3 BERLINE: 1KFC502**

Vinnumber:	<b>WBA3D11050P701594</b>	Versionname:	<b>2.0 318D (100KW) BERLINE</b>
First Registrationdate:	<b>20/04/2015</b>	Fiscalpower:	
Expertise Mileage:	<b>126439</b>	Power Kw:	<b>100</b>
Bodytype:		Body color:	<b>Brown</b>
Gearbox:	<b>MAN 6 VIT</b>	Paint type:	<b>Metalic</b>
Transmission:	<b>Back</b>	Rims summer:	<b>Aluminium</b>
Fueltype:	<b>Diesel</b>	Oil level:	<b>OK</b>
Battery functioning:	<b>Yes</b>	Parking lot:	<b>1105</b>
Number of doors:	<b>5</b>		
Number of seats:	<b>5</b>		
Number head rests:	<b>5</b>		
Rims summer:	<b>Aluminium</b>		
Category:	<b>Passenger Car</b>		
Oil level:	<b>OK</b>		
Registration Certificate Car (BE):	<b>Yes</b>		

**Options**

Radio CD	Central consol F
Windows electric F	Front parking sensors
Windows electric R	Rear parking sensors
Cruise Control	Type of Tow bar
Steering wheel multifunctional	<b>No Tow bar</b>
Seats F heated	
Radio multimedia	
Type of headlighting	<b>Headlighting Xenon</b>
Type of GPS	<b>No GPS</b>
Type of Lining	<b>Lining semi-artificial leather</b>
Type of climate control	<b>Autom climate control</b>

**Limited Technical Inspection**

Airco functioning	<b>OK</b>	Battery functioning	<b>Yes</b>
Tires wear profile	<b>OK</b>	Power steering	<b>Yes</b>
Idle position	<b>OK</b>	Sound engine	<b>OK</b>
Engine startingtime	<b>OK</b>	Clutch test	<b>OK</b>
Exhaust gass	<b>OK</b>	Wiper fluid level	<b>OK</b>
Handbrake	<b>OK</b>	Transmission	<b>OK</b>
		Lighting	<b>OK</b>
		Wiperblades	<b>OK</b>

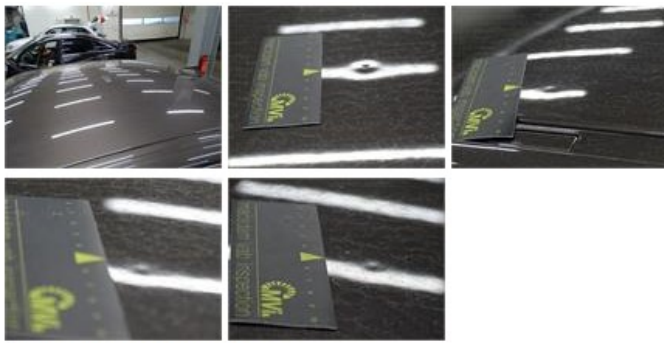
**Degree of wear**

<b>225/50/17/94 H LightMetal</b>				
Summer tyres:	Fr.L.	<b>Dunlop: 3 mm</b>	Fr.R.	<b>Dunlop: 3 mm</b>
	Re.L.	<b>Dunlop: 3 mm</b>	Re.R.	<b>Dunlop: 3 mm</b>

**Assistance equipment**

Number of charging cables (normal)	<b>0</b>	Runflat	<b>Yes</b>
Number of charging cables (rapid charge)	<b>0</b>		

Total cost ex VAT	<b>1367,20</b>
Roof, Dent(s), Acceptable	<b>0,00</b>



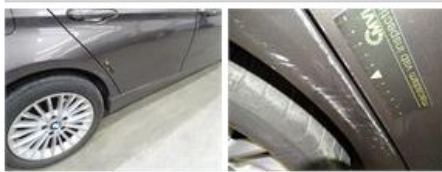
Tailgate, Dent(s), Acceptable 0,00

No pictures to display

Windscreen, Stone chip(s), E - Replace 487,20



Door R R, Scratch(es), Acceptable 0,00



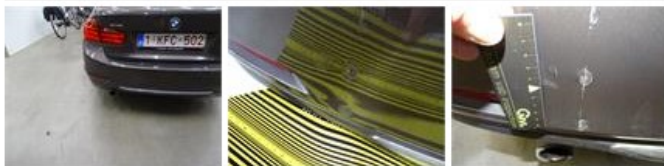
Wing R R, Dent(s) and scratch(es), LI - Repair and paint (complete) 308,20



Bonnet, Stone chip(s), Acceptable 0,00

No pictures to display

Bumper R, Dent(s) and scratch(es), LI - Repair and paint (complete) 211,80



Window R L door, Scratch(es), Acceptable 0,00

No pictures to display

Backrest cover R L, Incomplete, E - Replace 360,00

