



**LAND ROVER DISCOVERY SPORT: 1LPR122**

|                                    |                          |              |                                   |
|------------------------------------|--------------------------|--------------|-----------------------------------|
| Vinnumber:                         | <b>SALCA2BN7GH561766</b> | Versionname: | <b>2.0 TD4 132KW HSE 4WD AUTO</b> |
| First Registrationdate:            | <b>6/11/2015</b>         | Fiscalpower: |                                   |
| Expertise Mileage:                 | <b>80969</b>             | Power Kw:    | <b>132</b>                        |
| Bodytype:                          | <b>SUV</b>               | Body color:  | <b>Black</b>                      |
| Gearbox:                           | <b>Automatic</b>         | Paint type:  | <b>Metalic</b>                    |
| Transmission:                      | <b>4 Weel</b>            | Rims summer: | <b>Aluminium</b>                  |
| Fueltype:                          | <b>Diesel</b>            | Oil level:   | <b>OK</b>                         |
| Battery functioning:               | <b>Yes</b>               | Parking lot: | <b>3731</b>                       |
| Number of doors:                   | <b>5</b>                 |              |                                   |
| Number of seats:                   | <b>5</b>                 |              |                                   |
| Number head rests:                 | <b>5</b>                 |              |                                   |
| Rims summer:                       | <b>Aluminium</b>         |              |                                   |
| Category:                          | <b>Passenger Car</b>     |              |                                   |
| Oil level:                         | <b>OK</b>                |              |                                   |
| Registration Certificate Car (BE): | <b>Yes</b>               |              |                                   |

**Options**

|                                |                              |                       |                      |
|--------------------------------|------------------------------|-----------------------|----------------------|
| Radio CD                       |                              | Seats electric F L    |                      |
| TV/DVD screen R                |                              | Seats electric F R    |                      |
| GPS storage                    | <b>HD</b>                    | Central consol F      |                      |
| GPS storage                    |                              | Luggage cover         |                      |
| Windows electric F             |                              | Front parking sensors |                      |
| Windows electric R             |                              | Rear parking sensors  |                      |
| Cruise Control                 |                              | Type of Tow bar       | <b>Tow bar fixed</b> |
| Steering wheel multifunctional |                              |                       |                      |
| Seats F heated                 |                              |                       |                      |
| Radio multimedia               |                              |                       |                      |
| Type of headlighting           | <b>Headlighting Xenon</b>    |                       |                      |
| Type of GPS                    | <b>GPS big screen color</b>  |                       |                      |
| Type of Lining                 | <b>Lining leather</b>        |                       |                      |
| Type of climate control        | <b>Autom climate control</b> |                       |                      |

**Limited Technical Inspection**

|                     |           |                     |            |
|---------------------|-----------|---------------------|------------|
| Airco functioning   | <b>OK</b> | Battery functioning | <b>Yes</b> |
| Tires wear profile  | <b>OK</b> | Power steering      | <b>Yes</b> |
| Idle position       | <b>OK</b> | Sound engine        | <b>OK</b>  |
| Engine startingtime | <b>OK</b> | Clutch test         | <b>OK</b>  |
| Exhaust gass        | <b>OK</b> | Wiper fluid level   | <b>OK</b>  |
| Handbrake           | <b>OK</b> | Transmission        | <b>OK</b>  |
|                     |           | Lighting            | <b>OK</b>  |
|                     |           | Wiperblades         | <b>OK</b>  |

**Degree of wear**

|                                   |       |                      |       |                      |
|-----------------------------------|-------|----------------------|-------|----------------------|
| <b>235/60/18/107 V LightMetal</b> |       |                      |       |                      |
| Winter tyres:                     | Fr.L. | <b>Pirelli: 6 mm</b> | Fr.R. | <b>Pirelli: 6 mm</b> |
|                                   | Re.L. | <b>Pirelli: 5 mm</b> | Re.R. | <b>Pirelli: 5 mm</b> |

**Assistance equipment**

|  |            |            |            |
|--|------------|------------|------------|
| Repair kit                               | <b>Yes</b> | Compressor | <b>Yes</b> |
| Number of charging cables (normal)       | <b>0</b>   |            |            |
| Number of charging cables (rapid charge) | <b>0</b>   |            |            |

|   |             |
|---|-------------|
| <b>Total cost ex VAT</b>                          | <b>0,00</b> |
| <b>Bumper corner R R, Scratch(es), Acceptable</b> | <b>0,00</b> |

Roof, Scratch(es), Acceptable 0,00

No pictures to display

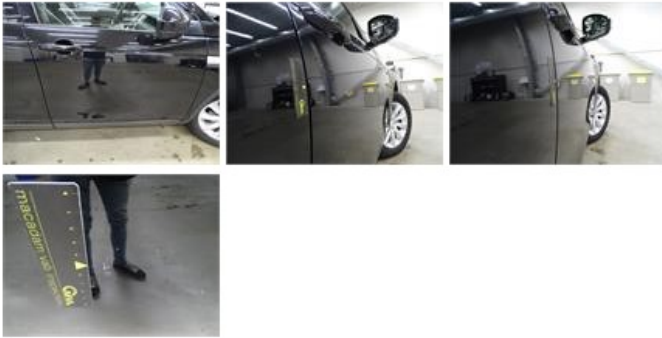
Wing R L, Scratch(es), Acceptable 0,00

No pictures to display

Rearview mirror basis L, Scratch(es), Acceptable 0,00

No pictures to display

Door F R, Bad repair, Acceptable 0,00



Bumper R, Scratch(es), Acceptable 0,00

No pictures to display

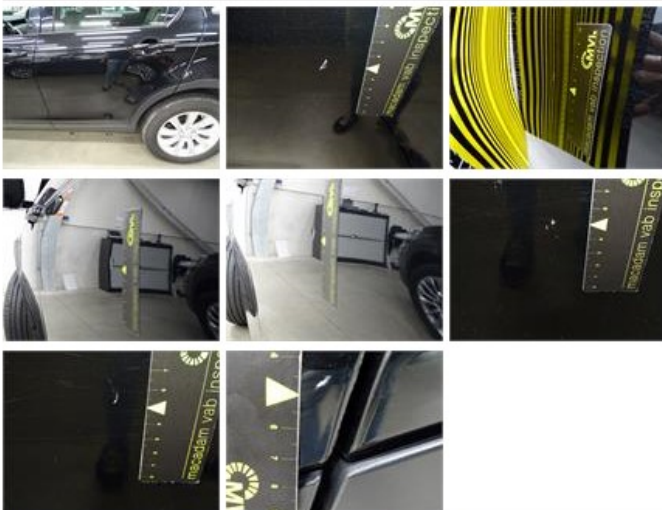
Tailgate, Scratch(es), LI - Repair and paint (complete) 0,00



Roof pillar R, Chemical polution, 67 - Polish 0,00

No pictures to display

Door R L, Dent(s) and scratch(es), LI - Repair and paint (complete) 0,00



Bonnet, Chemical polution, LI - Repair and paint (complete) 0,00



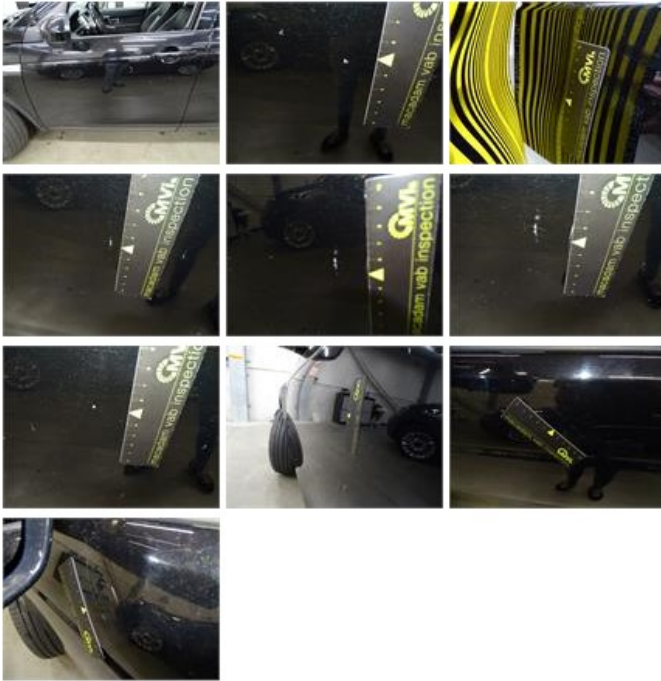
Wing F R, Scratch(es), Acceptable 0,00



No pictures to display

Door F L, Dent(s) and scratch(es), LI - Repair and paint (complete)

0,00



Door R R, Bad repair, Acceptable

0,00



Bumper F, Dent(s) and scratch(es), LI - Repair and paint (complete)

0,00



Trunk lid covering R, Scratch(es), Acceptable

0,00

No pictures to display