



BMW 5 TOURING: 1LKH283			
Vinnumber:	WBA5L110X0G344991	Versionname:	2.0 518D (100KW) TOURING
First Registrationdate:	12/10/2015	Fiscalpower:	
Expertise Mileage:	139140	Power Kw:	100
Bodytype:	Break	Body color:	Brown
Gearbox:	MAN 6 VIT	Paint type:	Metalic
Transmission:	Front	Rims summer:	Aluminium
Fueltype:	Diesel	Oil level:	OK
Battery functioning:	Yes	Parking lot:	2507
Number of doors:	5		
Number of seats:	5		
Number head rests:	5		
Rims summer:	Aluminium		
Category:	Passenger Car		
Oil level:	OK		
Registration Certificate Car (BE):	Yes		

Options			
Radio CD		Central consol F	
GPS storage	HD	Luggage cover	
GPS storage		Front parking sensors	
Windows electric F		Rear parking sensors	
Windows electric R		Type of Tow bar	No Tow bar
Cruise Control			
Steering wheel multifunctional			
Radio multimedia			
Type of headlighting	Headlighting Xenon		
Type of GPS	GPS big screen color		
Type of Lining	Lining leather		
Type of climate control	Autom climate control		

Limited Technical Inspection			
Airco functioning	OK	Battery functioning	Yes
Tires wear profile	OK	Power steering	Yes
Idle position	OK	Sound engine	OK
Engine startingtime	OK	Clutch test	OK
Exhaust gass	OK	Wiper fluid level	OK
Handbrake	OK	Transmission	OK
		Lighting	OK
		Wiperblades	OK

Degree of wear				
	225/55/17/97 W LightMetal			
Summer tyres:	Fr.L.	Michelin: 4 mm	Fr.R.	Michelin: 4 mm
	Re.L.	Michelin: 6 mm	Re.R.	Michelin: 6 mm

Assistance equipment			
Repair kit	Yes	Compressor	Yes

Total cost ex VAT	0,00
-------------------	------

Bonnet, Scratch(es), Acceptable	0,00
---------------------------------	------

No pictures to display

Alloy rim F R, Scratch(es), Acceptable	0,00
--	------

No pictures to display

Sill outer R, Scratch(es), Acceptable	0,00
---------------------------------------	------

No pictures to display

No pictures to display

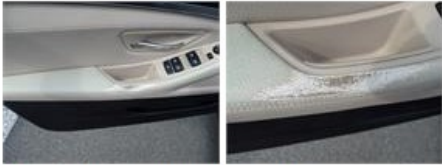
Bumper R, Scratch(es), Acceptable	0,00
-----------------------------------	------

No pictures to display

Armrest F Mid, Worn, Acceptable	0,00
---------------------------------	------



Armrest L, Worn, Acceptable	0,00
-----------------------------	------



Alloy rim R L, Scratch(es), Acceptable	0,00
--	------

No pictures to display