



**OPEL VIVARO: XT6696**

Vinnumber:	<b>W0L1F701FGV620021</b>	Versionname:	<b>1.6CDTI BT 103KW ELEGANCE SP DC LWB 2.9</b>
First Registrationdate:	<b>19/05/2016</b>	Fiscalpower:	
Expertise Mileage:	<b>106932</b>	Power Kw:	<b>103</b>
Bodytype:	<b>Transporter</b>	Body color:	<b>White</b>
Gearbox:	<b>MAN 6 VIT</b>	Paint type:	<b>Metalic</b>
Transmission:		Rims summer:	<b>Steel</b>
Fueltype:	<b>Diesel</b>	Oil level:	<b>OK</b>
Battery functioning:	<b>Yes</b>	Parking lot:	<b>3413</b>
Number of doors:	<b>5</b>		
Number of seats:	<b>5</b>		
Number head rests:	<b>5</b>		
Rims summer:	<b>Steel</b>		
Category:	<b>Light Commercial Vehicle</b>		
Oil level:	<b>OK</b>		

**Options**

Windows electric F	Central consol F
Cruise Control	Rear parking sensors
Steering wheel multifunctional	Type of Tow bar
Radio multimedia	<b>Tow bar fixed</b>
Type of headlighting	<b>Headlighting Halogen</b>
Type of GPS	<b>GPS big screen color</b>
Type of Lining	<b>Lining fabrics</b>
Type of climate control	<b>Manual climate control</b>

**Limited Technical Inspection**

Airco functioning	<b>OK</b>	Battery functioning	<b>Yes</b>
Tires wear profile	<b>OK</b>	Power steering	<b>Yes</b>
Idle position	<b>OK</b>	Sound engine	<b>OK</b>
Engine startingtime	<b>OK</b>	Clutch test	<b>OK</b>
Exhaust gass	<b>OK</b>	Wiper fluid level	<b>OK</b>
Handbrake	<b>OK</b>	Transmission	<b>OK</b>
		Lighting	<b>OK</b>
		Wiperblades	<b>OK</b>

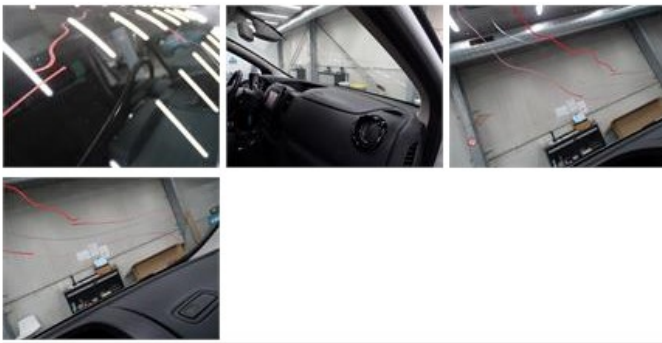
**Degree of wear**

	<b>215/65/16/109 R Steel</b>			
Winter tyres:	Fr.L.	<b>Vredestein: 6 mm</b>	Fr.R.	<b>Vredestein: 6 mm</b>
	Re.L.	<b>Vredestein: 8 mm</b>	Re.R.	<b>Vredestein: 8 mm</b>

**Assistance equipment**

Spare wheel	<b>Yes</b>
Total cost ex VAT	1309,78
Windscreen, Crack, E - Replace	395,40





Trunk door R L, Dent(s) and scratch(es), It - Spot repair 115,56



Bonnet, Stone chip(s), Acceptable 0,00

No pictures to display

Bumper F, Dent(s) and scratch(es), LI - Repair and paint (complete) 158,85



Trunk door R R, Dent(s) and scratch(es), It - Spot repair 115,56



Rearview mirror housing L, Scratch(es), LI - Repair and paint (complete) 115,56



Ignition key, Missing, E - Replace 150,00



Wheel cover F R, Scratch(es), Acceptable 0,00

Trunk door panel L, Scratch(es), E - Replace

50,00



Trunk door panel R, Scratch(es), E - Replace

50,00



Bumper R, Scratch(es), LI - Repair and paint (complete)

158,85

