



PEUGEOT 508: 1HFB580

Vinnumber:	VF38EAHVMELO24120	Versionname:	508 SW Active STT 136PK
First Registrationdate:	4/07/2014	Fiscalpower:	
Expertise Mileage:	166452	Power Kw:	100
Bodytype:	Break	Body color:	Dark Grey
Gearbox:	MAN 6 VIT	Paint type:	Metallic
Transmission:	Front	Rims summer:	Aluminium
Fueltype:	Diesel	Oil level:	OK
Battery functioning:	Yes	Parking lot:	3403
Number of doors:	5		
Number of seats:	5		
Number head rests:	5		
Rims summer:	Aluminium		
Category:	Passenger Car		
Oil level:	OK		
Registration Certificate Car (BE):	Yes		

Options

Radio CD		Seats electric F L	
GPS storage	HD	Seats electric F R	
GPS storage		Panoramic roof	
Windows electric F		Central consol F	
Windows electric R		Luggage cover	
Cruise Control		Front parking sensors	
Steering wheel multifunctional		Rear parking sensors	
Radio multimedia		Type of Tow bar	Tow bar fixed
Type of headlighting	Headlighting Halogen		
Type of GPS	GPS big screen color		
Type of Lining	Lining semi-artificial leather		
Type of climate control	Autom climate control		
Head-up Display			

Limited Technical Inspection

Airco functioning	OK	Battery functioning	Yes
Tires wear profile	OK	Power steering	Yes
Idle position	OK	Sound engine	OK
Engine startingtime	OK	Clutch test	OK
Exhaust gass	OK	Wiper fluid level	OK
Handbrake	OK	Transmission	OK
		Lighting	OK
		Wiperblades	OK

Degree of wear

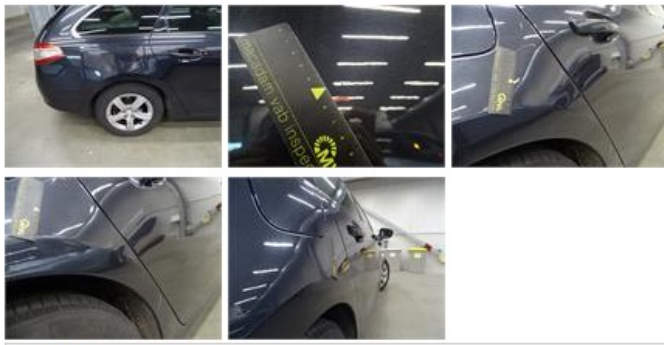
215/60/16/95 H LightMetal				
Summer tyres:	Fr.L.	Uniroyal: 5 mm	Fr.R.	Uniroyal: 5 mm
	Re.L.	Michelin: 4 mm	Re.R.	Michelin: 4 mm

Assistance equipment

Emergency spare wheel	Yes	Jack	Yes
Number of charging cables (normal)	0		
Number of charging cables (rapid charge)	0		

Total cost ex VAT 1201,22

Wing R R, Bad repair, Acceptable 0,00



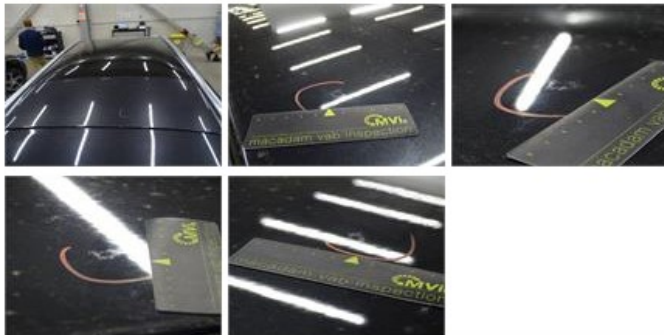
Wing F R, Repaired, Acceptable 0,00

No pictures to display

Protection plate M, Deformed / Strained, E - Replace 74,00



Roof, Chemical polution, LI - Repair and paint (complete) 481,50



Alloy rim F R, Scratch(es), LI - Repair and paint (complete) 95,00



Door R R, Scratch(es), Acceptable 0,00



Door F L, Scratch(es), Acceptable 0,00

No pictures to display

Wing F L, Scratch(es), Acceptable 0,00

No pictures to display

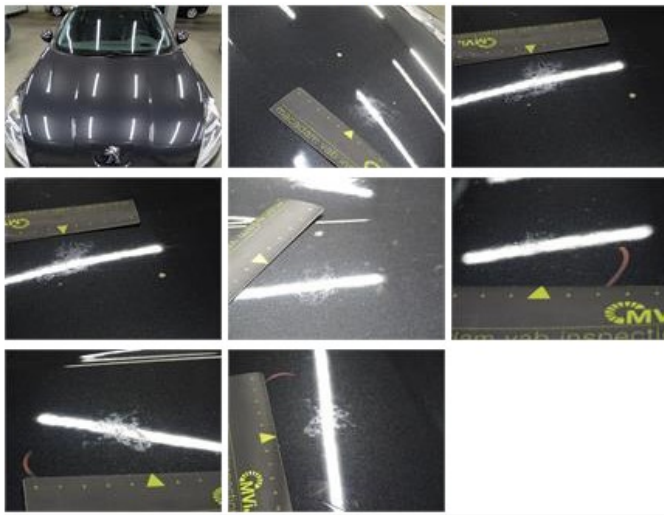
Bumper F, Scratch(es), Acceptable 0,00

No pictures to display

Door F R, Scratch(es), Acceptable 0,00

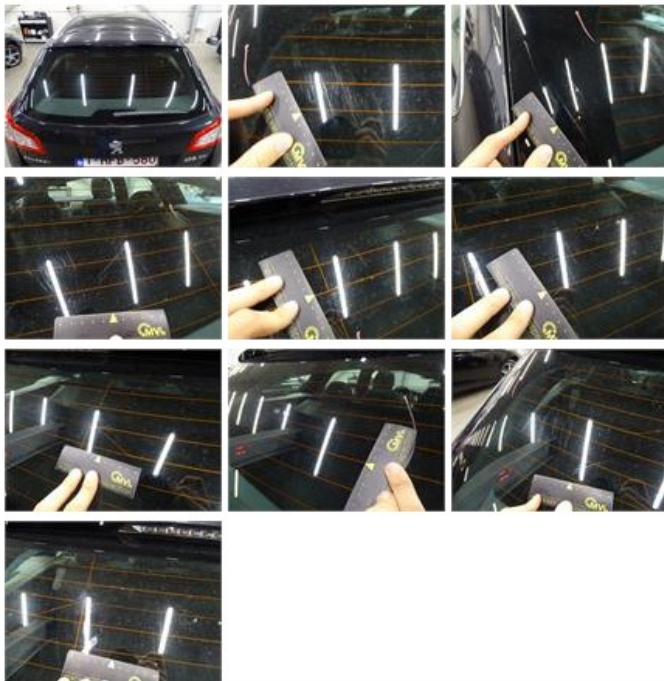
No pictures to display

Bonnet, Chemical polution, LI - Repair and paint (complete) 290,08



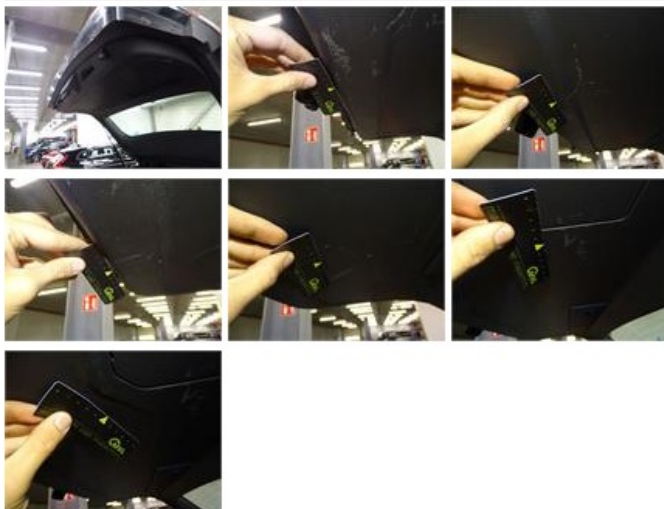
Rear window, Scratch(es), E - Replace

0,00



Trunk lid covering R, Scratch(es), Smart repair

110,64



Bumper R, Scratch(es), Acceptable

0,00

No pictures to display

Tailgate, Scratch(es), Acceptable

0,00

No pictures to display

Door R L, Scratch(es), Acceptable

0,00

No pictures to display

Ignition key, Missing, E - Replace

150,00

No pictures to display