



OPEL ASTRA: 1KKV569

| | | | |
|------------------------------------|--------------------------|--------------|--|
| Vinnumber: | WOLPE6E62FG101670 | Versionname: | 1.6 CDTI 81KW ECOFLEX S/S ULTIMATE PLUS |
| First Registrationdate: | 22/05/2015 | Fiscalpower: | |
| Expertise Mileage: | 74111 | Power Kw: | 81 |
| Bodytype: | Hatchback | Body color: | Black |
| Gearbox: | MAN 6 VIT | Paint type: | Metalic |
| Transmission: | | Rims summer: | Aluminium |
| Fueltype: | Diesel | Oil level: | OK |
| Battery functioning: | Yes | Parking lot: | 3504 |
| Number of doors: | 5 | | |
| Number of seats: | 5 | | |
| Number head rests: | 5 | | |
| Rims summer: | Aluminium | | |
| Category: | Passenger Car | | |
| Oil level: | OK | | |
| Registration Certificate Car (BE): | Yes | | |

Options

| | | |
|--------------------------------|------------------------------|-------------------|
| Radio CD | Central consol F | |
| Windows electric F | Luggage cover | |
| Windows electric R | Front parking sensors | |
| Cruise Control | Rear parking sensors | |
| Steering wheel multifunctional | Type of Tow bar | No Tow bar |
| Radio multimedia | | |
| Type of headlighting | Headlighting Halogen | |
| Type of GPS | GPS big screen color | |
| Type of Lining | Lining fabrics | |
| Type of climate control | Autom climate control | |

Limited Technical Inspection

| | | | |
|---------------------|-----------|---------------------|------------|
| Airco functioning | OK | Battery functioning | Yes |
| Tires wear profile | OK | Power steering | Yes |
| Idle position | OK | Sound engine | OK |
| Engine startingtime | OK | Clutch test | OK |
| Exhaust gass | OK | Wiper fluid level | OK |
| Handbrake | OK | Transmission | OK |
| | | Lighting | OK |
| | | Wiperblades | OK |

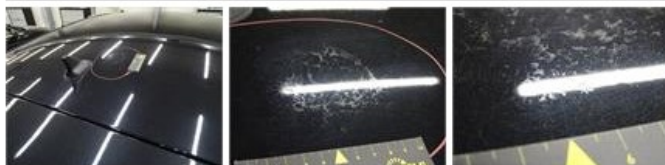
Degree of wear

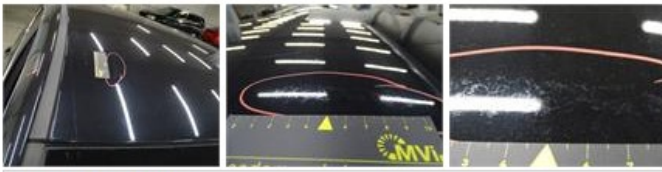
| | | | | |
|----------------------------------|-------|--------------------------|-------|--------------------------|
| 215/60/16/95 V LightMetal | | | | |
| Summer tyres: | Fr.L. | Continental: 3 mm | Fr.R. | Continental: 3 mm |
| | Re.L. | Continental: 6 mm | Re.R. | Continental: 6 mm |

Assistance equipment

| | | | |
|------------|------------|------------|------------|
| Repair kit | Yes | Compressor | Yes |
|------------|------------|------------|------------|

| | |
|---|---------------|
| Total cost ex VAT | 481,50 |
| Roof, Chemical polution, LI - Repair and paint (complete) | 481,50 |





Interior, Dirty, Cleaning

0,00

