



**BMW 2 ACTIVE TOURER: 1LDJ099**

Vinnumber:	<b>WBA2B31070V614546</b>	Versionname:	<b>1.5 216D ACTIVE TOURER</b>
First Registrationdate:	<b>27/08/2015</b>	Fiscalpower:	
Expertise Mileage:	<b>104804</b>	Power Kw:	<b>85</b>
Bodytype:		Body color:	<b>Dark Blue</b>
Gearbox:	<b>MAN 6 VIT</b>	Paint type:	<b>Metalic</b>
Transmission:	<b>Front</b>	Rims summer:	<b>Aluminium</b>
Fueltype:	<b>Diesel</b>	Oil level:	<b>OK</b>
Battery functioning:	<b>Yes</b>	Parking lot:	<b>1512</b>
Number of doors:	<b>5</b>		
Number of seats:	<b>5</b>		
Number head rests:	<b>5</b>		
Rims summer:	<b>Aluminium</b>		
Category:	<b>Passenger Car</b>		
Oil level:	<b>OK</b>		
Registration Certificate Car (BE):	<b>Yes</b>		

**Options**

Windows electric F	Central consol F	
Windows electric R	Luggage cover	
Cruise Control	Rear parking sensors	
Steering wheel multifunctional	Type of Tow bar	<b>Tow bar fixed</b>
Radio multimedia		
Type of headlighting	<b>Headlighting Halogen</b>	
Type of GPS	<b>GPS big screen color</b>	
Type of Lining	<b>Lining artificial leather</b>	
Type of climate control	<b>Autom climate control</b>	

**Limited Technical Inspection**

Airco functioning	<b>OK</b>	Battery functioning	<b>Yes</b>
Tires wear profile	<b>OK</b>	Power steering	<b>Yes</b>
Idle position	<b>OK</b>	Sound engine	<b>OK</b>
Engine startingtime	<b>OK</b>	Clutch test	<b>OK</b>
Exhaust gass	<b>OK</b>	Wiper fluid level	<b>OK</b>
Handbrake	<b>OK</b>	Transmission	<b>OK</b>
		Lighting	<b>OK</b>
		Wiperblades	<b>OK</b>

**Degree of wear**

<b>205/60/16/92 V LightMetal</b>				
Summer tyres:	Fr.L.	<b>Continental: 5 mm</b>	Fr.R.	<b>Continental: 5 mm</b>
	Re.L.	<b>Continental: 5 mm</b>	Re.R.	<b>Continental: 5 mm</b>

**Assistance equipment**

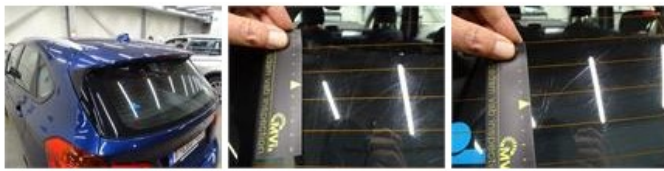
Emergency spare wheel	<b>Yes</b>	Jack	<b>Yes</b>
Number of charging cables (normal)	<b>0</b>		
Number of charging cables (rapid charge)	<b>0</b>		

Total cost ex VAT	<b>486,60</b>
-------------------	---------------

Alloy rim R R, Scratch(es), Acceptable	<b>0,00</b>
--	-------------

No pictures to display

Rear window, Scratch(es), E - Replace	<b>0,00</b>
---------------------------------------	-------------



Wing F R, Scratch(es), Acceptable 0,00

No pictures to display

Bumper F, Dent(s) and scratch(es), LI - Repair and paint (complete) 211,80



Bumper R, Scratch(es), LI - Repair and paint (complete) 211,80



Door F L, Scratch(es), Acceptable 0,00

No pictures to display

Door R R, Scratch(es), Acceptable 0,00

No pictures to display

Door F R, Scratch(es), Acceptable 0,00

No pictures to display

Roof, Dent(s), PDR - Paintless dent repair 63,00

