


MERCEDES A: 1PSS763

| | | | |
|------------------------------------|--------------------------|--------------|---------------------------------------|
| Vinnumber: | WDD1760121J524416 | Versionname: | A 180 d BlueEFFICIENCY Edition |
| First Registrationdate: | 8/09/2016 | Fiscalpower: | |
| Expertise Mileage: | 72134 | Power Kw: | 80 |
| Bodytype: | | Body color: | Grey |
| Gearbox: | MAN 6 VIT | Paint type: | Metalic |
| Transmission: | Front | Rims summer: | Steel |
| Fueltype: | Diesel | Oil level: | OK |
| Battery functioning: | Yes | Parking lot: | 3833 |
| Number of doors: | 5 | | |
| Number of seats: | 5 | | |
| Number head rests: | 5 | | |
| Rims summer: | Steel | | |
| Category: | Passenger Car | | |
| Oil level: | OK | | |
| Registration Certificate Car (BE): | Yes | | |

Options

| | | | |
|--------------------------------|-------------------------------|------------------|-------------------|
| Radio CD | | Central consol F | |
| GPS storage | SD | Luggage cover | |
| GPS storage | | Type of Tow bar | No Tow bar |
| Windows electric F | | | |
| Windows electric R | | | |
| Steering wheel multifunctional | | | |
| Radio multimedia | | | |
| Type of headlighting | Headlighting Halogen | | |
| Type of GPS | GPS big screen color | | |
| Type of Lining | Lining fabrics | | |
| Type of climate control | Manual climate control | | |

Limited Technical Inspection

| | | | |
|---------------------|-----------|---------------------|------------|
| Airco functioning | OK | Battery functioning | Yes |
| Tires wear profile | OK | Power steering | Yes |
| Idle position | OK | Sound engine | OK |
| Engine startingtime | OK | Clutch test | OK |
| Exhaust gass | OK | Wiper fluid level | OK |
| Handbrake | OK | Transmission | OK |
| | | Lighting | OK |
| | | Wiperblades | OK |

Degree of wear

| | | | | |
|---------------|-----------------------------|--------------------------|-------|--------------------------|
| | 195/65/15/95 V Steel | | | |
| Winter tyres: | Fr.L. | Continental: 7 mm | Fr.R. | Continental: 7 mm |
| | Re.L. | Michelin: 6 mm | Re.R. | Michelin: 6 mm |

Assistance equipment

| | | | |
|--|------------|------------|------------|
| Repair kit | Yes | Compressor | Yes |
| Number of charging cables (normal) | 0 | | |
| Number of charging cables (rapid charge) | 0 | | |

| | |
|---|---------|
| Total cost ex VAT | 1330,23 |
| Bumper R, Scratch(es), Acceptable | 0,00 |
| <i>No pictures to display</i> | |
| Bumper F, Scratch(es), LI - Repair and paint (complete) | 211,80 |



Wheel cover F R, Scratch(es), E - Replace

30,00



Door R R, Dent(s) and scratch(es), LI - Repair and paint (complete)

318,35



Wing F L, Scratch(es), Acceptable

0,00

No pictures to display

Reversible boot mat, Stain, Cleaning

25,00



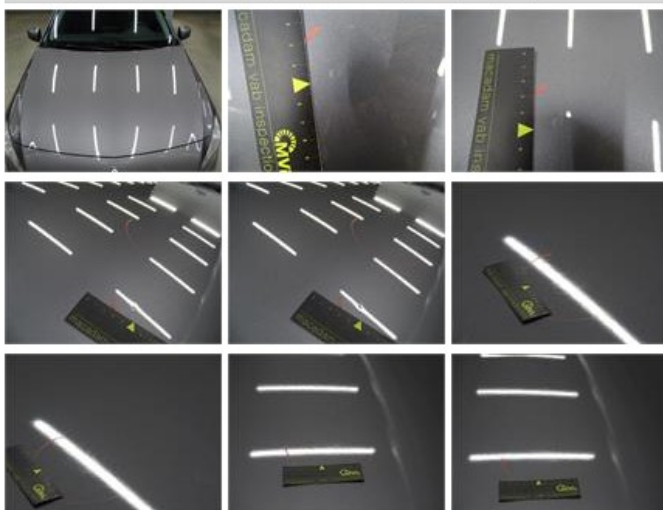
Rocker panel inner R L, Scratch(es), Acceptable

0,00

No pictures to display

Bonnet, Dent(s) and scratch(es), LI - Repair and paint (complete)

290,08



Door F R, Scratch(es), Acceptable

0,00

No pictures to display

Wing R L, Scratch(es), Acceptable

0,00

No pictures to display

Seat cover F L, Stain, Cleaning

25,00



Wheel cover R R, Scratch(es), E - Replace

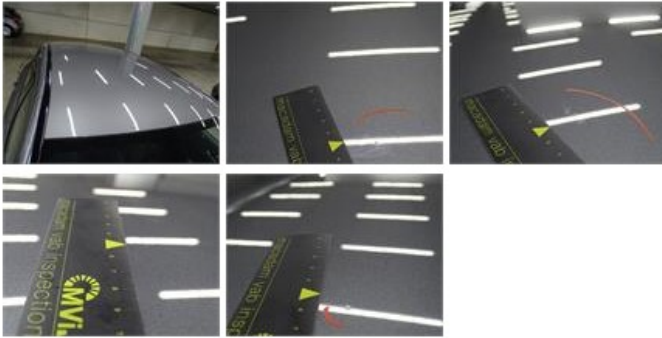
30,00



Door F L, Scratch(es), Acceptable 0,00

No pictures to display

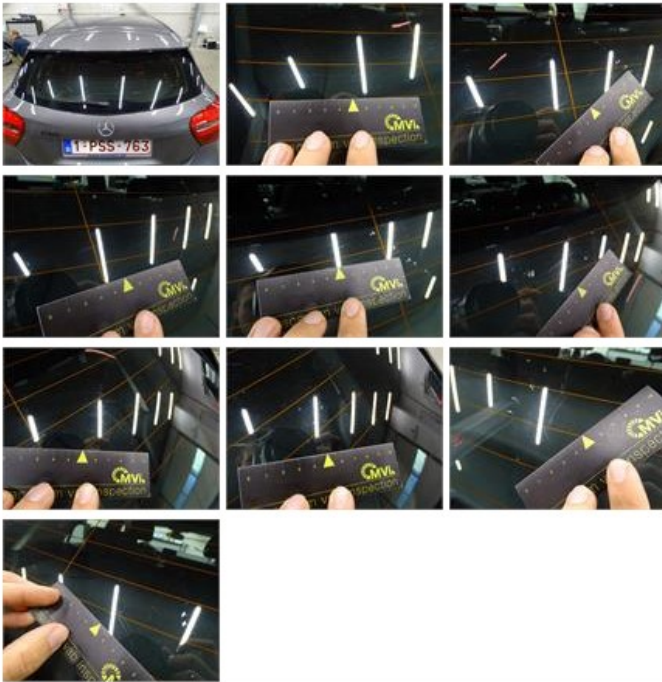
Roof, Bad repair, Acceptable 0,00



Steel rim R R, Scratch(es), Acceptable 0,00

No pictures to display

Rear window, Scratch(es), E - Replace 370,00



Wheel cover F L, Scratch(es), E - Replace 30,00

