



**MERCEDES A: 1PPH022**

Vinnumber:	<b>WDD1760121J513791</b>	Versionname:	<b>A 180 d BlueEFFICIENCY Edition</b>
First Registrationdate:	<b>22/08/2016</b>	Fiscalpower:	
Expertise Mileage:	<b>46483</b>	Power Kw:	<b>80</b>
Bodytype:		Body color:	<b>Grey</b>
Gearbox:	<b>MAN 6 VIT</b>	Paint type:	<b>Metallic</b>
Transmission:	<b>Front</b>	Rims summer:	<b>Steel</b>
Fueltype:	<b>Diesel</b>	Oil level:	<b>OK</b>
Battery functioning:	<b>Yes</b>	Parking lot:	<b>3830</b>
Number of doors:	<b>5</b>		
Number of seats:	<b>5</b>		
Number head rests:	<b>5</b>		
Rims summer:	<b>Steel</b>		
Category:	<b>Passenger Car</b>		
Oil level:	<b>OK</b>		
Registration Certificate Car (BE):	<b>Yes</b>		

**Options**

Radio CD		Central consol F	
GPS storage		Luggage cover	
GPS storage	<b>SD</b>	Type of Tow bar	<b>No Tow bar</b>
Windows electric F			
Windows electric R			
Steering wheel multifunctional			
Radio multimedia			
Type of headlighting	<b>Headlighting Halogen</b>		
Type of GPS	<b>GPS big screen color</b>		
Type of Lining	<b>Lining fabrics</b>		
Type of climate control	<b>Manual climate control</b>		

**Limited Technical Inspection**

Airco functioning	<b>OK</b>	Battery functioning	<b>Yes</b>
Tires wear profile	<b>OK</b>	Power steering	<b>Yes</b>
Idle position	<b>OK</b>	Sound engine	<b>OK</b>
Engine startingtime	<b>OK</b>	Clutch test	<b>OK</b>
Exhaust gass	<b>OK</b>	Wiper fluid level	<b>OK</b>
Handbrake	<b>OK</b>	Transmission	<b>OK</b>
		Lighting	<b>OK</b>
		Wiperblades	<b>OK</b>

**Degree of wear**

	<b>195/65/15/95 V Steel</b>			
Winter tyres:	Fr.L.	<b>Michelin: 4 mm</b>	Fr.R.	<b>Michelin: 4 mm</b>
	Re.L.	<b>Michelin: 6 mm</b>	Re.R.	<b>Michelin: 6 mm</b>

**Assistance equipment**

Repair kit	<b>Yes</b>	Compressor	<b>Yes</b>
Number of charging cables (normal)	<b>0</b>		
Number of charging cables (rapid charge)	<b>0</b>		

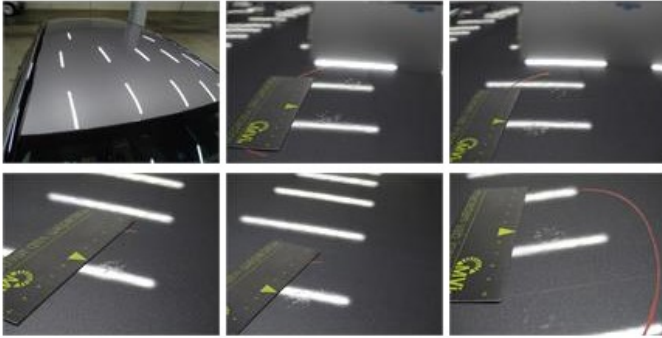
Total cost ex VAT	<b>1104,98</b>
Wing R R, Bad repair, Acceptable	<b>0,00</b>



Wing F R, Scratch(es), Acceptable 0,00

No pictures to display

Roof, Chemical pollution, LI - Repair and paint (complete) 481,50



Wheel cover F L, Scratch(es), E - Replace 30,00



Door F L, Scratch(es), Acceptable 0,00

No pictures to display

Door F R, Scratch(es), Acceptable 0,00

No pictures to display

Wheel cover F R, Broken, E - Replace 30,00



Bonnet, Repaired, Acceptable 0,00

No pictures to display

Tailgate, Scratch(es), LI - Repair and paint (complete) 301,68



Door R L, Scratch(es), Acceptable 0,00

No pictures to display

Remaining, Scratch(es), Acceptable 0,00

Rear window, Scratch(es), Acceptable

0,00



Bumper F, Scratch(es), LI - Repair and paint (complete)

211,80



Boot cover, Broken, E - Replace

50,00

