



CITROEN JUMPER: 1KV571

Vinnumber:	VF7YCUMFB12869631	Versionname:	2.2 HDI 110KW 35 L2H2 CLUB
First Registrationdate:	16/07/2015	Fiscalpower:	
Expertise Mileage:	203248	Power Kw:	110
Bodytype:		Body color:	White
Gearbox:	MAN 6 VIT	Paint type:	Opaque
Transmission:	Back	Rims summer:	Steel
Fueltype:	Diesel	Oil level:	OK
Battery functioning:	Yes	Parking lot:	LCV08
Number of doors:	6		
Number of seats:	3		
Number head rests:	3		
Rims summer:	Steel		
Category:	Light Commercial Vehicle		
Oil level:	OK		
Registration Certificate Car (BE):	Yes		

Options

Radio CD		Rear parking sensors	
Windows electric F		Type of Tow bar	No Tow bar
Cruise Control			
Steering wheel multifunctional			
Radio multimedia			
Type of headlighting	Headlighting Halogen		
Type of GPS	GPS big screen color		
Type of Lining	Lining fabrics		
Type of climate control	Manual climate control		
Level control			

Limited Technical Inspection

Airco functioning	OK	Battery functioning	Yes
Tires wear profile	OK	Power steering	Yes
Idle position	OK	Sound engine	OK
Engine startingtime	OK	Clutch test	OK
Exhaust gass	OK	Wiper fluid level	OK
Handbrake	OK	Transmission	OK
		Lighting	OK
		Wiperblades	OK

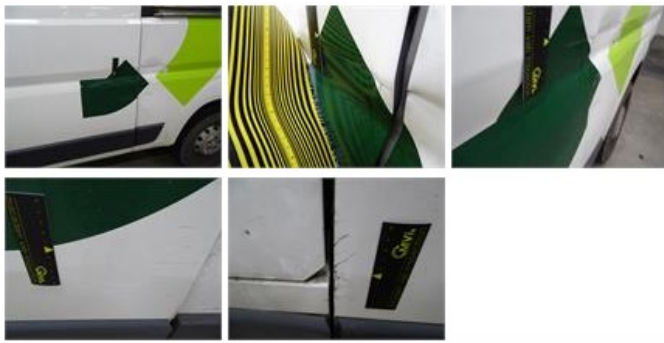
Degree of wear

	225/70/15/110 R Steel			
Summer tyres:	Fr.L.	Uniroyal: 4 mm	Fr.R.	Uniroyal: 4 mm
	Re.L.	Uniroyal: 4 mm	Re.R.	Uniroyal: 4 mm

Assistance equipment

Spare wheel	Yes	Jack	Yes
Number of charging cables (normal)	0		
Number of charging cables (rapid charge)	0		

Total cost ex VAT	1676,01
Bonnet, Dent(s), Acceptable	0,00
<i>No pictures to display</i>	
Sliding door L, Dent(s) and scratch(es), LI - Repair and paint (complete)	382,02



Trunk door R R, Dent(s), PDR - Paintless dent repair 63,00



Trunk door R L, Dent(s), Acceptable 0,00

No pictures to display

Bumper F, Scratch(es), Acceptable 0,00

No pictures to display

Bodywork, Not original part, Acceptable 0,00

No pictures to display

Sill outer L, Scratch(es), Acceptable 0,00

No pictures to display

Wing R R, Scratch(es), LI - Repair and paint (complete) 231,15



Wing R L, Dent(s) and scratch(es), LI - Repair and paint (complete) 231,15



Sill outer R, Dent(s), It - Spot repair 115,56



Rear floor , Deformed / Strained, Repair/replace (lump sum) 292,00



Roof, Dent(s), LI - Repair and paint (complete) 361,13

