



BMW 5 TOURING: 1KEY215

Vinnumber:	WBA5L31080G080245	Versionname:	2.0 520D (120KW) TOURING
First Registrationdate:	17/04/2015	Fiscalpower:	
Expertise Mileage:	79816	Power Kw:	120
Bodytype:	Break	Body color:	Dark Grey
Gearbox:	Automatic	Paint type:	Metalic
Transmission:	Back	Rims summer:	Aluminium
Fueltype:	Diesel	Oil level:	OK
Battery functioning:	Yes	Parking lot:	2226
Number of doors:	5		
Number of seats:	5		
Number head rests:	5		
Rims summer:	Aluminium		
Category:	Passenger Car		
Oil level:	OK		
Registration Certificate Car (BE):	Yes		

Options

Radio CD		Sun Roof electric	
GPS storage		Panoramic roof	
GPS storage	HD	Central consol F	
Windows electric F		Luggage cover	
Windows electric R		Front parking sensors	
Cruise Control		Rear parking sensors	
Steering wheel multifunctional		Type of Tow bar	Tow bar fixed
Seats F heated			
Radio multimedia			
Type of headlighting	Headlighting Xenon		
Type of GPS	GPS big screen color		
Type of Lining	Lining leather		
Type of climate control	Autom climate control		

Limited Technical Inspection

Airco functioning	OK	Battery functioning	Yes
Tires wear profile	OK	Power steering	Yes
Idle position	OK	Sound engine	OK
Engine startingtime	OK	Clutch test	OK
Exhaust gass	OK	Wiper fluid level	OK
Handbrake	OK	Transmission	OK
		Lighting	OK
		Wiperblades	OK

Degree of wear

225/55/17/97 Y LightMetal				
Summer tyres:	Fr.L.	Bridgestone: 5 mm	Fr.R.	Bridgestone: 5 mm
	Re.L.	Bridgestone: 3 mm	Re.R.	Bridgestone: 3 mm

Assistance equipment

Number of charging cables (normal)	0	Runflat	Yes
Number of charging cables (rapid charge)	0		

Total cost ex VAT	1798,78
Bumper R, Scratch(es), LI - Repair and paint (complete)	254,16



Door F R, Scratch(es), Acceptable 0,00

No pictures to display

Bumper F, Dent(s) and scratch(es), LI - Repair and paint (complete) 254,16



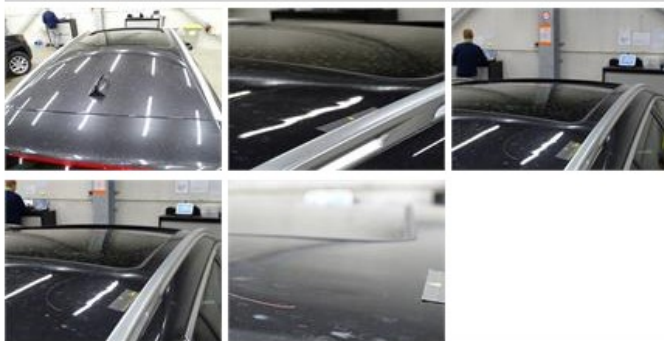
Alloy rim F R, Scratch(es), LI - Repair and paint (complete) 95,00



Rearview mirror basis L, Scratch(es), Smart repair 110,64



Roof, Dent(s), PDR - Paintless dent repair 122,40



Wing R R, Scratch(es), Acceptable 0,00

No pictures to display

Alloy rim R R, Scratch(es), LI - Repair and paint (complete) 95,00



Wing R L, Dent(s) and scratch(es), LI - Repair and paint (complete) 369,84



Door R R, Dent(s) and scratch(es), LI - Repair and paint (complete) 382,02



Door F L, Scratch(es), Acceptable 0,00

No pictures to display

Door R L, Dent(s) and scratch(es), Acceptable 0,00

No pictures to display

Rearview mirror housing R, Scratch(es), LI - Repair and paint (complete) 115,56

