



**RENAULT Clio: 1JKN843**

Vinnumber:	<b>VF17R040H52234242</b>	Versionname:	<b>CLIO IV BRE Expression 75PK</b>
First Registrationdate:	<b>12/01/2015</b>	Fiscalpower:	
Expertise Mileage:	<b>121774</b>	Power Kw:	<b>55</b>
Bodytype:	<b>Break</b>	Body color:	<b>White</b>
Gearbox:	<b>MAN 5 VIT</b>	Paint type:	<b>Metalic</b>
Transmission:		Rims summer:	<b>Steel</b>
Fueltype:	<b>Diesel</b>	Oil level:	<b>OK</b>
Battery functioning:	<b>Yes</b>	Parking lot:	<b>3629</b>
Number of doors:	<b>5</b>		
Number of seats:	<b>5</b>		
Number head rests:	<b>5</b>		
Rims summer:	<b>Steel</b>		
Category:	<b>Passenger Car</b>		
Oil level:	<b>OK</b>		
Registration Certificate Car (BE):	<b>Yes</b>		

**Options**

Windows electric F	Luggage cover
Cruise Control	Rear parking sensors
Steering wheel multifunctional	Type of Tow bar
Radio multimedia	<b>Tow bar fixed</b>
Type of headlighting	<b>Headlighting Halogen</b>
Type of GPS	<b>GPS big screen color</b>
Type of Lining	<b>Lining fabrics</b>
Type of climate control	<b>Manual climate control</b>

**Limited Technical Inspection**

Airco functioning	<b>OK</b>	Battery functioning	<b>Yes</b>
Tires wear profile	<b>OK</b>	Power steering	<b>Yes</b>
Idle position	<b>OK</b>	Sound engine	<b>OK</b>
Engine startingtime	<b>OK</b>	Clutch test	<b>OK</b>
Exhaust gass	<b>OK</b>	Wiper fluid level	<b>OK</b>
Handbrake	<b>OK</b>	Transmission	<b>OK</b>
		Lighting	<b>OK</b>
		Wiperblades	<b>OK</b>

**Degree of wear**

<b>185/65/15/88 T Steel</b>				
Summer tyres:	Fr.L.	<b>Goodyear: 4 mm</b>	Fr.R.	<b>Goodyear: 4 mm</b>
	Re.L.	<b>Goodyear: 5 mm</b>	Re.R.	<b>Goodyear: 5 mm</b>

**Assistance equipment**

Emergency spare wheel	<b>Yes</b>
-----------------------	------------

Total cost ex VAT	1099,80
-------------------	---------

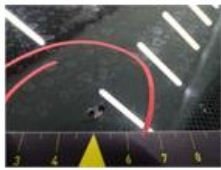
Wheel cover F R, Scratch(es), E - Replace	24,00
---	-------





Windscreen, Stone chip(s), Acceptable

0,00



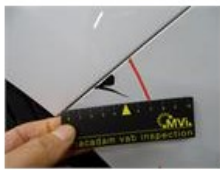
Wheel cover F L, Deformed / Strained, E - Replace

24,00



Bumper F, Scratch(es), LI - Repair and paint (complete)

169,44



Rearview mirror housing L, Scratch(es), LI - Repair and paint (complete)

115,56



Ignition key, Missing, E - Replace

150,00

No pictures to display

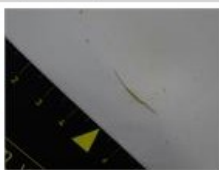
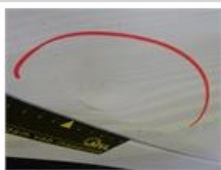
Wheel cover R R, Scratch(es), Acceptable

0,00

No pictures to display

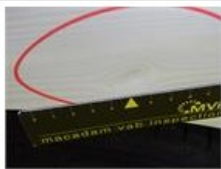
Door R R, Dent(s) and scratch(es), LI - Repair and paint (complete)

254,68



Wing R R, Dent(s) and scratch(es), LI - Repair and paint (complete)

246,56



Bodywork, Not original part, Acceptable

0,00

No pictures to display

Bumper corner R R, Scratch(es), It - Spot repair

115,56

