



**RENAULT MEGANE GRANDTOUR: 1JVH582**

Vinnumber:	<b>VF1KZ0R0252562790</b>	Versionname:	<b>1.5 DCI 95 TOMTOM? EDITION</b>
First Registrationdate:	<b>5/03/2015</b>	Fiscalpower:	
Expertise Mileage:	<b>140483</b>	Power Kw:	<b>70</b>
Bodytype:	<b>Break</b>	Body color:	<b>Black</b>
Gearbox:	<b>MAN 6 VIT</b>	Paint type:	<b>Metalic</b>
Transmission:		Rims summer:	<b>Steel</b>
Fueltype:	<b>Diesel</b>	Oil level:	<b>OK</b>
Battery functioning:	<b>Yes</b>	Parking lot:	<b>2819</b>
Number of doors:	<b>5</b>		
Number of seats:	<b>5</b>		
Number head rests:	<b>5</b>		
Rims summer:	<b>Steel</b>		
Category:	<b>Passenger Car</b>		
Oil level:	<b>OK</b>		
Registration Certificate Car (BE):	<b>Yes</b>		

**Options**

Radio CD	Central consol F
Windows electric F	Luggage cover
Windows electric R	Type of Tow bar
Cruise Control	<b>No Tow bar</b>
Steering wheel multifunctional	
Radio multimedia	
Type of headlighting	<b>Headlighting Halogen</b>
Type of GPS	<b>GPS big screen color</b>
Type of Lining	<b>Lining fabrics</b>
Type of climate control	<b>Autom climate control</b>

**Limited Technical Inspection**

Airco functioning	<b>OK</b>	Battery functioning	<b>Yes</b>
Tires wear profile	<b>OK</b>	Power steering	<b>Yes</b>
Idle position	<b>OK</b>	Sound engine	<b>OK</b>
Engine startingtime	<b>OK</b>	Clutch test	<b>OK</b>
Exhaust gass	<b>OK</b>	Wiper fluid level	<b>OK</b>
Handbrake	<b>OK</b>	Transmission	<b>OK</b>
		Lighting	<b>OK</b>
		Wiperblades	<b>OK</b>

**Degree of wear**

	<b>205/55/16/91 H Steel</b>			
Summer tyres:	Fr.L.	<b>Goodyear: 4 mm</b>	Fr.R.	<b>Goodyear: 4 mm</b>
	Re.L.	<b>Goodyear: 5 mm</b>	Re.R.	<b>Goodyear: 5 mm</b>

**Assistance equipment**

Total cost ex VAT	1684,02
Interior, Dirty, Cleaning	50,00





Door F L, Scratch(es), Acceptable 0,00

No pictures to display

Bonnet, Chemical polution, LI - Repair and paint (complete) 290,08



Bumper corner R R, Scratch(es), It - Spot repair 115,56



Door R R, Scratch(es), Acceptable 0,00

No pictures to display

Tailgate, Scratch(es), LI - Repair and paint (complete) 301,68



Door F R, Scratch(es), Acceptable 0,00

No pictures to display

Wheel cover F R, Deformed / Strained, E - Replace 30,00



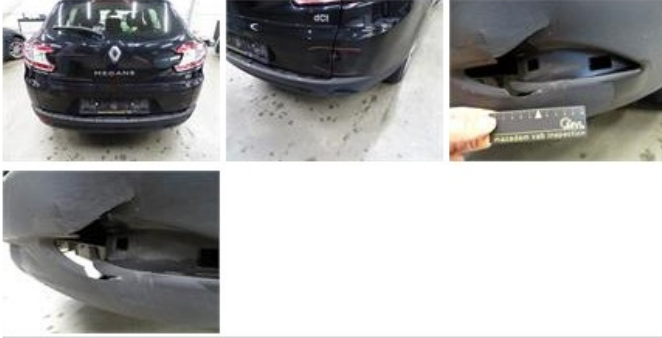
Roof, Chemical polution, LI - Repair and paint (complete) 481,50



Wing R L, Scratch(es), Acceptable 0,00

No pictures to display

Bumper R, Deformed / Strained, E - Replace 415,20



Wing R R, Scratch(es), Acceptable 0,00

No pictures to display