


PEUGEOT 308: 1HXG305

| | | | |
|------------------------------------|--------------------------|--------------|--|
| Vinnumber: | VF3LCBHXHES245804 | Versionname: | 308 SW BlueHDi Allure STT 116PK |
| First Registrationdate: | 21/10/2014 | Fiscalpower: | |
| Expertise Mileage: | 181533 | Power Kw: | 85 |
| Bodytype: | Break | Body color: | White |
| Gearbox: | MAN 6 VIT | Paint type: | Opaque |
| Transmission: | Front | Rims summer: | Aluminium |
| Fueltype: | Diesel | Oil level: | OK |
| Battery functioning: | Yes | Parking lot: | 3415 |
| Number of doors: | 5 | | |
| Number of seats: | 5 | | |
| Number head rests: | 5 | | |
| Rims summer: | Aluminium | | |
| Category: | Passenger Car | | |
| Oil level: | OK | | |
| Registration Certificate Car (BE): | Yes | | |

Options

| | | | |
|--------------------------------|------------------------------|-----------------------|-------------------|
| GPS storage | HD | Central consol F | |
| GPS storage | | Luggage cover | |
| Windows electric F | | Front parking sensors | |
| Windows electric R | | Rear parking sensors | |
| Cruise Control | | Type of Tow bar | No Tow bar |
| Steering wheel multifunctional | | | |
| Radio multimedia | | | |
| Type of headlighting | Headlighting LED | | |
| Type of GPS | GPS big screen color | | |
| Type of Lining | Lining fabrics | | |
| Type of climate control | Autom climate control | | |

Limited Technical Inspection

| | | | |
|---------------------|-----------|---------------------|------------|
| Airco functioning | OK | Battery functioning | Yes |
| Tires wear profile | OK | Power steering | Yes |
| Idle position | OK | Sound engine | OK |
| Engine startingtime | OK | Clutch test | OK |
| Exhaust gass | OK | Wiper fluid level | OK |
| Handbrake | OK | Transmission | OK |
| | | Lighting | OK |
| | | Wiperblades | OK |

Degree of wear

| | | | | |
|----------------------------------|-------|-----------------------|-------|-----------------------|
| 205/55/16/91 V LightMetal | | | | |
| Summer tyres: | Fr.L. | Michelin: 5 mm | Fr.R. | Michelin: 5 mm |
| | Re.L. | Uniroyal: 4 mm | Re.R. | Uniroyal: 4 mm |

Assistance equipment

| | | | |
|--|------------|------|------------|
| Emergency spare wheel | Yes | Jack | Yes |
| Number of charging cables (normal) | 0 | | |
| Number of charging cables (rapid charge) | 0 | | |

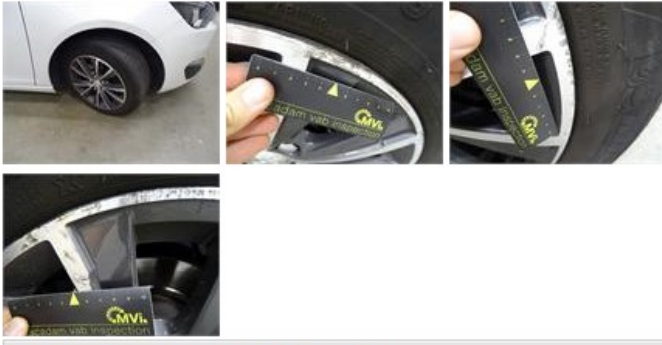
| | |
|---|---------|
| Total cost ex VAT | 1455,86 |
| Alloy rim F L polished, Scratch(es), LI - Repair and paint (complete) | 95,00 |



Door R R, Scratch(es), Acceptable 0,00

No pictures to display

Alloy rim F R polished, Scratch(es), LI - Repair and paint (complete) 95,00



Trunk lid covering R, Scratch(es), Smart repair 110,64



Bumper F, Scratch(es), LI - Repair and paint (complete) 211,80



Door F L, Dent(s) and scratch(es), Acceptable 0,00

No pictures to display

Alloy rim R R polished, Scratch(es), LI - Repair and paint (complete) 95,00





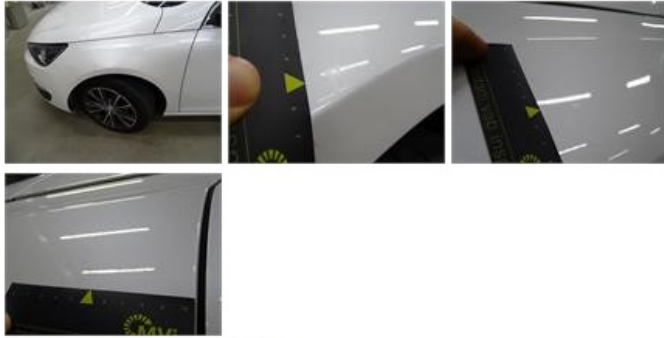
| | |
|---|--------|
| Rocker panel inner R R, Dent(s), LI - Repair and paint (complete) | 115,56 |
|---|--------|



| | |
|---------------------------------------|------|
| Windscreen, Stone chip(s), Acceptable | 0,00 |
|---------------------------------------|------|

No pictures to display

| | |
|----------------------------------|------|
| Wing F L, Bad repair, Acceptable | 0,00 |
|----------------------------------|------|



| | |
|-----------------------------------|------|
| Tailgate, Scratch(es), Acceptable | 0,00 |
|-----------------------------------|------|

No pictures to display

| | |
|--------------------------------------|------|
| Rear window, Scratch(es), Acceptable | 0,00 |
|--------------------------------------|------|



| | |
|-----------------------------------|------|
| Door R L, Scratch(es), Acceptable | 0,00 |
|-----------------------------------|------|

No pictures to display

| | |
|-----------------------------------|------|
| Door F R, Scratch(es), Acceptable | 0,00 |
|-----------------------------------|------|

No pictures to display

| | |
|---|--------|
| Sill outer R, Dent(s) and scratch(es), LI - Repair and paint (complete) | 310,50 |
|---|--------|



| | |
|---------------------------|------|
| Roof, Dent(s), Acceptable | 0,00 |
|---------------------------|------|

No pictures to display

Bumper R, Dent(s) and scratch(es), LI - Repair and paint (complete)

211,80



Alloy rim R L polished, Scratch(es), LI - Repair and paint (complete)

95,00



Rocker panel inner R L, Dent(s), LI - Repair and paint (complete)

115,56



Wing R R, Dent(s) and scratch(es), Acceptable

0,00

No pictures to display