


**MERCEDES A: 1PZF800**

Vinnumber:	<b>WDD1760121J544812</b>	Versionname:	<b>A 180 d BlueEFFICIENCY Edition</b>
First Registrationdate:	<b>18/10/2016</b>	Fiscalpower:	
Expertise Mileage:	<b>46883</b>	Power Kw:	<b>80</b>
Bodytype:		Body color:	<b>Silver</b>
Gearbox:	<b>MAN 6 VIT</b>	Paint type:	<b>Metallic</b>
Transmission:	<b>Front</b>	Rims summer:	<b>Steel</b>
Fueltype:	<b>Diesel</b>	Oil level:	<b>OK</b>
Battery functioning:	<b>Yes</b>	Parking lot:	<b>1315</b>
Number of doors:	<b>5</b>		
Number of seats:	<b>5</b>		
Number head rests:	<b>5</b>		
Rims summer:	<b>Steel</b>		
Category:	<b>Passenger Car</b>		
Oil level:	<b>OK</b>		
Registration Certificate Car (BE):	<b>Yes</b>		

**Options**

Radio CD		Central consol F	
GPS storage		Front parking sensors	
GPS storage	<b>SD</b>	Rear parking sensors	
Windows electric F		Type of Tow bar	<b>No Tow bar</b>
Windows electric R			
Steering wheel multifunctional			
Radio multimedia			
Type of headlighting	<b>Headlighting Halogen</b>		
Type of GPS	<b>GPS big screen color</b>		
Type of Lining	<b>Lining fabrics</b>		
Type of climate control	<b>Manual climate control</b>		

**Limited Technical Inspection**

Airco functioning	<b>OK</b>	Battery functioning	<b>Yes</b>
Tires wear profile	<b>OK</b>	Power steering	<b>Yes</b>
Idle position	<b>OK</b>	Sound engine	<b>OK</b>
Engine startingtime	<b>OK</b>	Clutch test	<b>OK</b>
Exhaust gass	<b>OK</b>	Wiper fluid level	<b>OK</b>
Handbrake	<b>OK</b>	Transmission	<b>OK</b>
		Lighting	<b>OK</b>
		Wiperblades	<b>OK</b>

**Degree of wear**

	<b>195/65/15/91 T Steel</b>			
Summer tyres:	Fr.L.	<b>Michelin: 4 mm</b>	Fr.R.	<b>Michelin: 4 mm</b>
	Re.L.	<b>Michelin: 6 mm</b>	Re.R.	<b>Michelin: 6 mm</b>

**Assistance equipment**

Repair kit	<b>Yes</b>	Compressor	<b>Yes</b>
Number of charging cables (normal)	<b>0</b>		
Number of charging cables (rapid charge)	<b>0</b>		

Total cost ex VAT	1254,44
Bumper F, Scratch(es), Acceptable	0,00
<i>No pictures to display</i>	
Rear window, Scratch(es), E - Replace	0,00



Boot cover, Missing, E - Replace 50,00



Wing F L, Repaired, Acceptable 0,00

No pictures to display

Sill outer R, Scratch(es), LI - Repair and paint (complete) 310,50



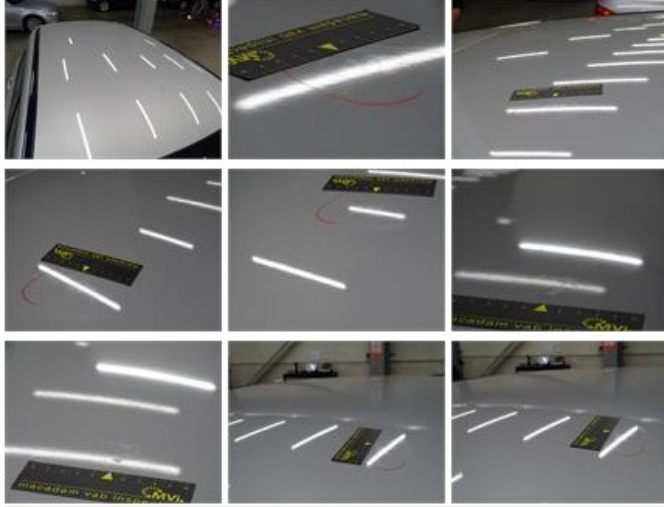
Door R R, Scratch(es), Acceptable 0,00

No pictures to display

Wing R L, Dent(s) and scratch(es), Acceptable 0,00

No pictures to display

Roof, Chemical polution, LI - Repair and paint (complete) 481,50



Rearview mirror housing L, Scratch(es), Acceptable 0,00

No pictures to display

Wheel cover F R, Scratch(es), E - Replace 30,00





Wheel cover R L, Scratch(es), Acceptable 0,00

No pictures to display

Door F L, Dent(s), Acceptable 0,00

No pictures to display

Wheel cover F L, Broken, E - Replace 30,00



Wheel cover R R, Scratch(es), E - Replace 30,00



Bumper R, Dent(s) and scratch(es), LI - Repair and paint (complete) 211,80



Roof pillar L, Dent(s), Acceptable 0,00

No pictures to display

Door F R, Scratch(es), Acceptable 0,00

No pictures to display

Trunk lid covering R, Scratch(es), Smart repair 110,64



