



BMW 1: 1EZQ802			
Vinnumber:	<b>WBA1C91020J510761</b>	Versionname:	<b>1 HATCH 116d Eff.Dyn.Ed. 116PK</b>
First Registrationdate:	<b>30/04/2013</b>	Fiscalpower:	
Expertise Mileage:	<b>169126</b>	Power Kw:	<b>85</b>
Bodytype:		Body color:	<b>Black</b>
Gearbox:	<b>MAN 6 VIT</b>	Paint type:	<b>Metalic</b>
Transmission:	<b>Back</b>	Rims summer:	<b>Aluminium</b>
Fueltype:	<b>Diesel</b>	Oil level:	<b>OK</b>
Battery functioning:	<b>Yes</b>	Parking lot:	<b>2327</b>
Number of doors:	<b>5</b>		
Number of seats:	<b>5</b>		
Number head rests:	<b>5</b>		
Rims summer:	<b>Aluminium</b>		
Category:	<b>Passenger Car</b>		
Oil level:	<b>OK</b>		

Options			
Radio CD		Central consol F	
GPS storage	<b>HD</b>	Luggage cover	
GPS storage		Type of Tow bar	<b>No Tow bar</b>
Windows electric F			
Windows electric R			
Cruise Control			
Steering wheel multifunctional			
Seats F heated			
Radio multimedia			
Type of headlighting	<b>Headlighting Halogen</b>		
Type of GPS	<b>GPS big screen color</b>		
Type of Lining	<b>Lining artificial leather</b>		
Type of climate control	<b>Manual climate control</b>		

Limited Technical Inspection			
Airco functioning	<b>OK</b>	Battery functioning	<b>Yes</b>
Tires wear profile	<b>OK</b>	Power steering	<b>Yes</b>
Idle position	<b>OK</b>	Sound engine	<b>OK</b>
Engine startingtime	<b>OK</b>	Clutch test	<b>OK</b>
Exhaust gass	<b>OK</b>	Wiper fluid level	<b>OK</b>
Handbrake	<b>OK</b>	Transmission	<b>OK</b>
		Lighting	<b>OK</b>
		Wiperblades	<b>OK</b>

Degree of wear				
	<b>205/55/16/91 W LightMetal</b>			
Summer tyres:	Fr.L.	<b>Bridgestone: 5 mm</b>	Fr.R.	<b>Bridgestone: 5 mm</b>
	Re.L.	<b>Bridgestone: 6 mm</b>	Re.R.	<b>Bridgestone: 6 mm</b>

Assistance equipment			
Repair kit	<b>Yes</b>	Compressor	<b>Yes</b>
Number of charging cables (normal)	<b>0</b>		
Number of charging cables (rapid charge)	<b>0</b>		

Total cost ex VAT 1069,16

Wing R L, Scratch(es), Acceptable 0,00

No pictures to display

Alloy rim F R, Scratch(es), LI - Repair and paint (complete) 95,00

No pictures to display

Bonnet, Hail damage, Le - Replace and paint

0,00



Bumper F, Dent(s) and scratch(es), LI - Repair and paint (complete)

211,80



Roof pillar R, Hail damage, PDR - Hail

0,00



Alloy rim R R, Scratch(es), LI - Repair and paint (complete)

95,00

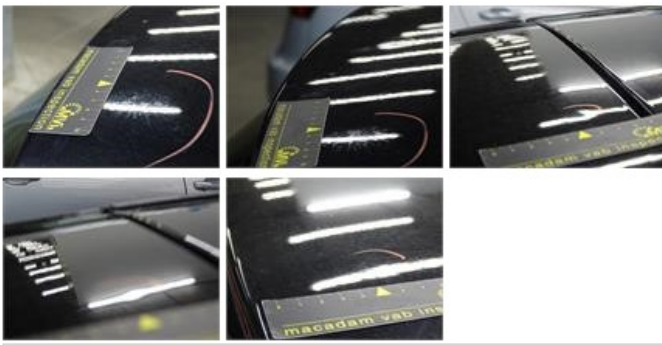


Rear spoiler, Chemical polution, LI - Repair and paint (complete)

115,56







Wing R R, Scratch(es), Acceptable 0,00

No pictures to display

Tailgate, Scratch(es), Acceptable 0,00

No pictures to display

Alloy rim F L, Scratch(es), LI - Repair and paint (complete) 95,00



Bumper R, Scratch(es), LI - Repair and paint (complete) 211,80



Door F L, Scratch(es), Acceptable 0,00

No pictures to display

Wing F R, Scratch(es), Acceptable 0,00

No pictures to display

Door R L, Scratch(es), Acceptable 0,00

No pictures to display

Door R R, Dent(s) and scratch(es), Acceptable 0,00

No pictures to display

Roof pillar L, Hail damage, PDR - Hail 0,00



Rear window, Scratch(es), E - Replace 0,00





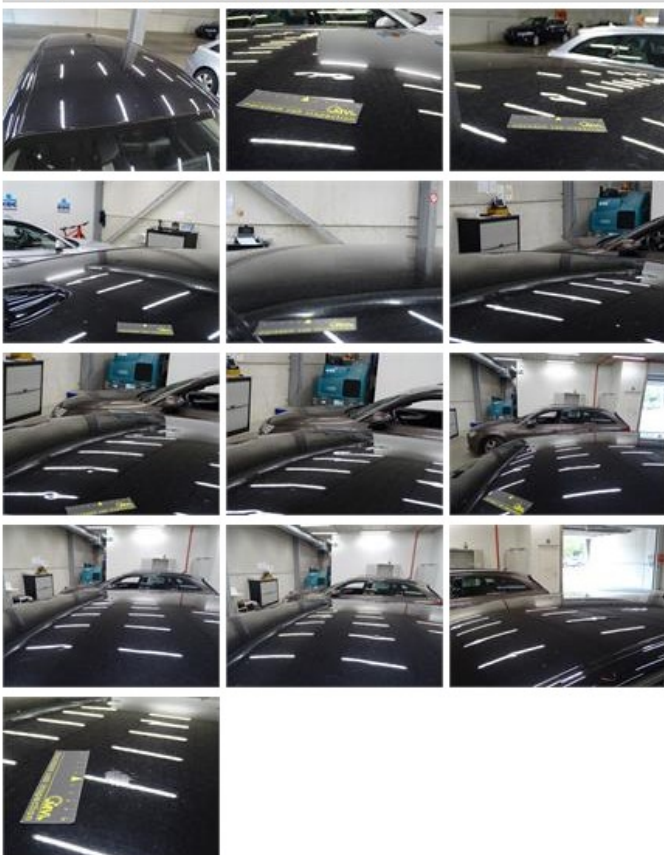
Alloy rim R L, Scratch(es), LI - Repair and paint (complete)

95,00



Roof, Hail damage, LI - Repair and paint (complete)

0,00



Ignition key, Broken, E - Replace

150,00

